



Mauritius Road, Greenwich, London, SE10

£800,000 *Freehold*

4  2  2 

This wonderful mid-terraced Victorian family home is presented in superb condition throughout and has been beautifully extended to both the rear and the loft, creating a generous four-bedroom, two-reception property measuring approximately 1,218 sq ft. Quietly located at the foot of the North Greenwich Peninsula and moments from the river footpath, the house perfectly blends period charm with contemporary living.

KEY FEATURES

- Mid-terraced Victorian family home
- Four bedrooms, two receptions
- Extended rear and loft
- Approx. 1,218 sq ft
- Quiet North Greenwich location
- Moments from the river
- Open-plan kitchen/dining



Greenwich

02030533033 | greenwich@winkworth.co.uk

Winkworth

for every step...



The accommodation begins with an elegant front reception room featuring bespoke window shutters, which flows seamlessly into a stylish open-plan kitchen. The kitchen is particularly well fitted, with a comprehensive range of integrated white goods and ample storage. To the rear, a fabulous extended reception provides an impressive family and entertaining space, enhanced by hardwood flooring, skylights and bi-fold doors opening directly onto the garden. A convenient guest WC completes the ground floor.

On the first floor are two well-proportioned bedrooms and a large family bathroom located to the rear. The converted loft space adds two further bedrooms, including a principal bedroom with en-suite shower room, along with useful eaves storage.

Externally, the rear garden is attractively paved with flower borders, offering an easy-to-maintain and tranquil outdoor space.

Mauritius Road is ideally positioned just moments from the river and close to The O2 Arena with its world-class music venue, shops and restaurants, as well as the Jubilee Line and Emirates Air Line cable car. Nearby UNESCO-listed Greenwich offers a vibrant town centre with a wide variety of shops, restaurants and Greenwich Market, together with mainline rail, DLR and riverboat services. The beautiful Royal Greenwich Park and its historic Observatory are also close at hand, making this an exceptional family home in a highly sought-after location.



MATERIAL INFORMATION

Tenure: Freehold

Council Tax Band: E

EPC rating: To be confirmed

Is the property listed: Property is not listed

Utilities:

Electricity supply: Mains Supply

Sewerage supply: Mains Supply

Water supply: Mains Supply

Mobile signal:

Rights & Easements:

Does the property have any easements: Property does not have easements

Does the property have public rights of way: Property does not have public rights of way across the property

Does the property have restrictions: Property does not have restrictions

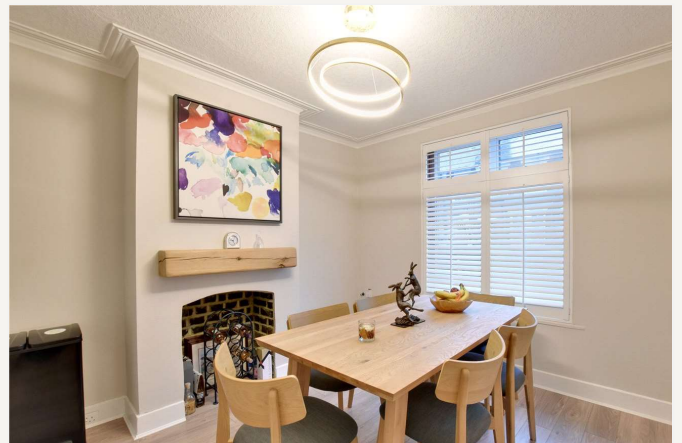
Flooding:

Has the property flooded in the last 5 years: Property has not flooded in the last five years

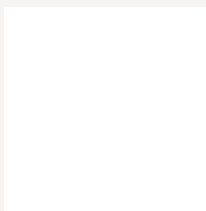
Last flood date:

Does the property have flood defences: Property does not have flood defences

Is object modified: False



For more information, scan the QR code or visit the link below



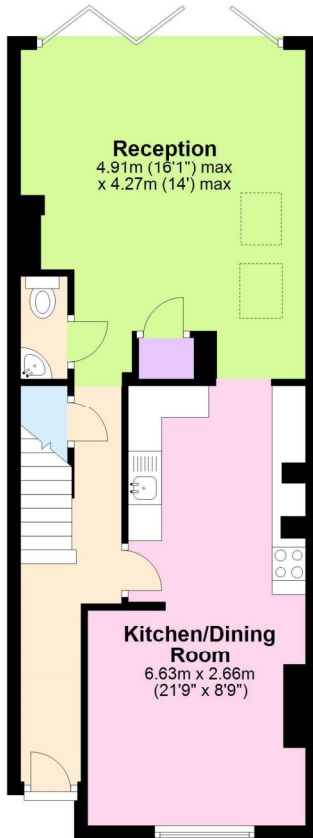
<https://www.winkworth.co.uk/sale/property/GRE250272>

Where no figures are shown, we have been unable to ascertain the information. All figures that are shown were correct at the time of printing.



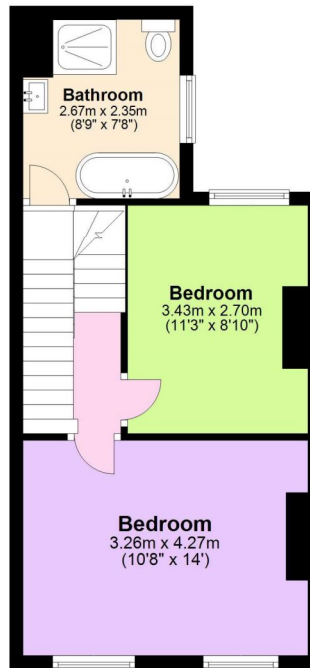
Ground Floor

Approx. 49.0 sq. metres (527.6 sq. feet)



First Floor

Approx. 35.5 sq. metres (381.7 sq. feet)



Second Floor

Approx. 28.7 sq. metres (309.0 sq. feet)



Total area: approx. 113.2 sq. metres (1218.3 sq. feet)

Greenwich

02030533033 | greenwich@winkworth.co.uk

Winkworth

for every step...

Winkworth wishes to inform prospective buyers and tenants that these particulars are a guide and act as information only. All our details are given in good faith and believed to be correct at the time of printing but they don't form part of an offer or contract. No Winkworth employee has authority to make or give any representation or warranty in relation to this property. All fixtures and fittings, whether fitted or not are deemed removable by the vendor unless stated otherwise and room sizes are measured between internal wall surfaces, including furnishings.