



Winkworth

for every step...

Flat 3 Chichester Court, Edgware, Middlesex, HA8

OFFERS IN EXCESS OF £225,000 *Leasehold – Approx 133 years remaining*



SERVICE CHARGE APPROX £2,670 PER ANNUM

NO GROUND RENT PAYABLE

COUNCIL TAX BAND B - HARROW

KEY FEATURES

- CHAIN FREE
- PRIME LOCATION
- GARAGE
- BLANK CANVAS
- FIRST TIME BUYERS
- BUY TO LET



Kingsbury

020 8204 0000 | kingsbury@winkworth.co.uk

Winkworth

for every step...



DESCRIPTION:

A fantastic opportunity for first-time buyers or investors alike, this one bedroom first floor flat on the ever-popular and well connected Whitchurch Lane offers a superb blank canvas ready to make your own.

The property comprises a bright and well-proportioned reception room, separate kitchen, double bedroom and bathroom.

Further benefits include a separate garage allocated, well-maintained communal areas and a convenient location close to local shops, Canons Park Station (Jubilee Line) and Edgware (Northern Line) shops and amenities..

Offered chain free, this is an ideal purchase for those looking for a straightforward move at an affordable price. Early viewing is highly recommended.





LOCATION

For more information, scan the QR code or visit the link below



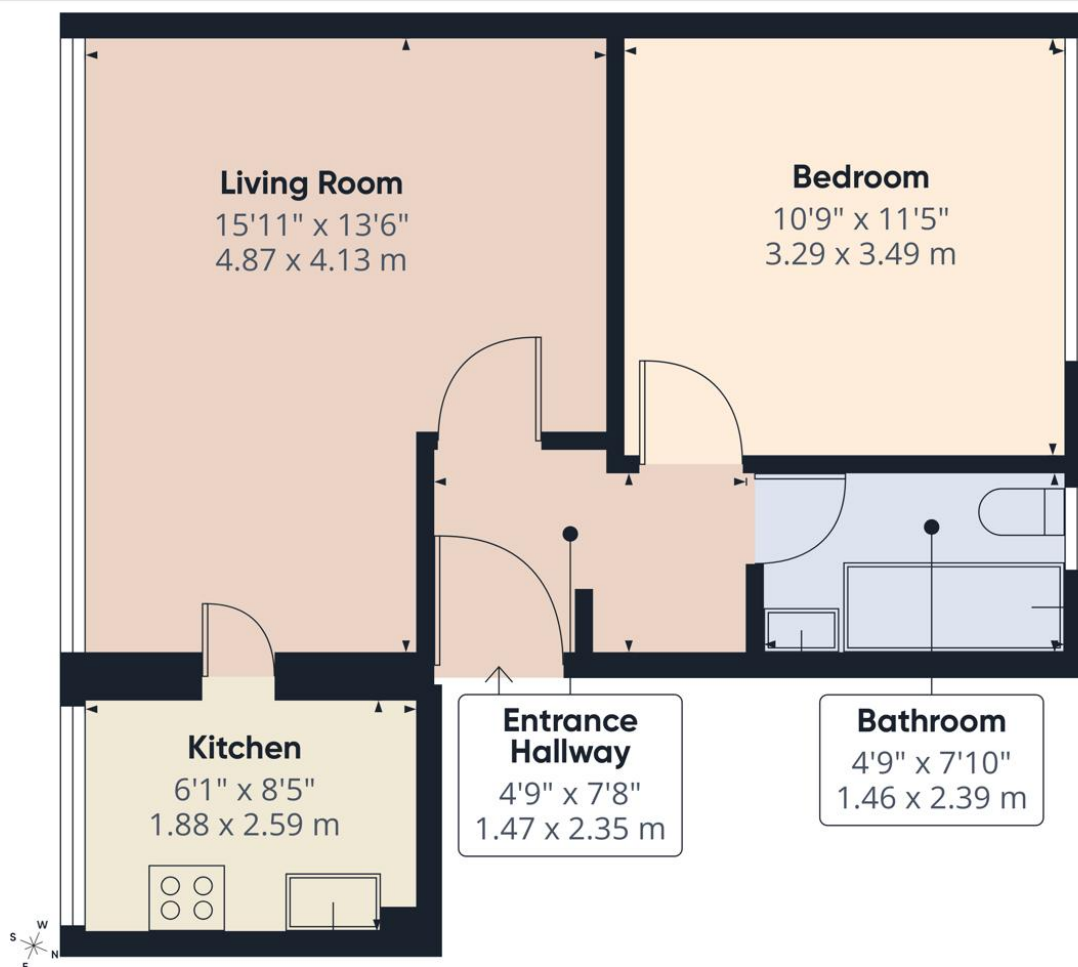
<https://www.winkworth.co.uk/sale/property/KBS260075>

Where no figures are shown, we have been unable to ascertain the information. All figures that are shown were correct at the time of printing.

MATERIAL INFO

- Tenure: Leasehold
- Term: 133 year and 1 months
- Service Charge: £2670 per annum
- Ground Rent: £ 0 Annually
- Council Tax Band: B
- EPC rating: C

Score	Energy rating	Current	Potential
92+	A		
81-91	B		
69-80	C	69 C	74 C
55-68	D		
39-54	E		
21-38	F		
1-20	G		



Approximate total area⁽¹⁾
453 ft²
42 m²

(1) Excluding balconies and terraces

Calculations reference the RICS IPMS 3C standard. Measurements are approximate and not to scale. This floor plan is intended for illustration only.

GIRAFFE360