



TRAGAIL, LONDON, SW15

**£2,000 PER MONTH FURNISHED**

**AN EXCELLENTLY MAINTAINED TWO BEDROOM, FULLY FURNISHED FLAT CLOSE TO PUTNEY HIGH STREET & LOCAL TRANSPORTATION.**

Putney | 020 8788 9295 | [putney@winkworth.co.uk](mailto:putney@winkworth.co.uk)

**Winkworth**

for every step...

[winkworth.co.uk](http://winkworth.co.uk)



## DESCRIPTION:

This well maintained and fully furnished two-bedroom apartment offers an inviting and practical living space on the third floor of a well-regarded building. With an approximate gross internal area of 754 sq. ft., the property is thoughtfully laid out to provide both comfort and functionality.

The accommodation comprises of two generously sized bedrooms, a spacious reception and dining room with a separately fitted kitchen and bathroom. The reception room is particularly impressive, offering a bright space and excellent proportions with a versatile layout ideal for both relaxing and entertaining. The kitchen is well-appointed with ample storage and workspace, while both bedrooms provide comfortable retreats with plenty of natural light.

Situated on Mercier Road, Putney, this property enjoys a highly convenient location. It is within close proximity to Putney High Street, with its wide range of shops, cafés, and restaurants. Excellent transport links are also nearby, including Putney mainline station and East Putney Underground station, offering easy access into Central London and beyond.

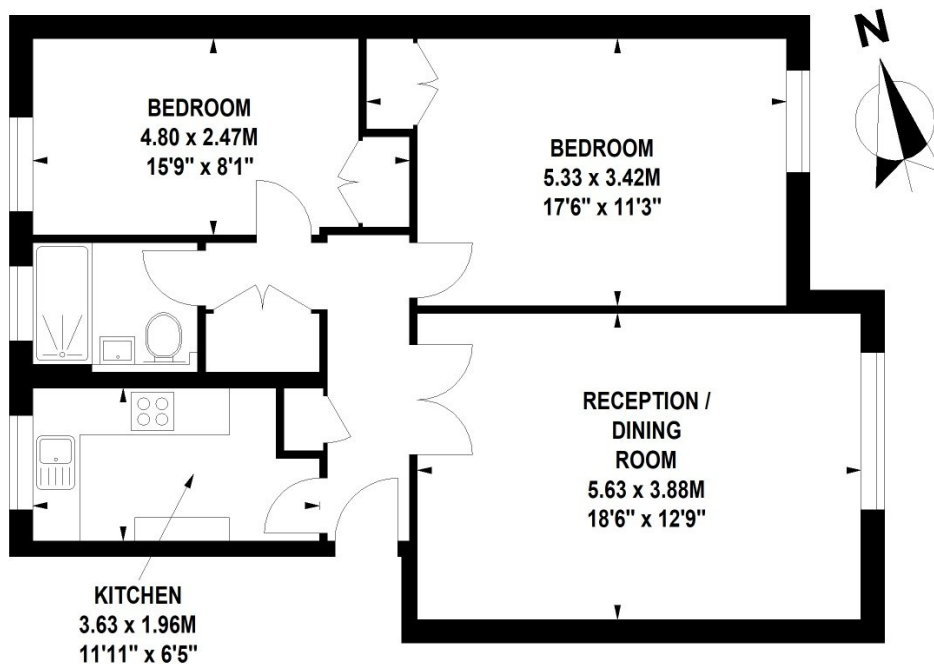






# Tragail, Mercier Road, SW15

Approximate Gross Internal Area 70 sq.m / 754 sq. ft



## Third Floor

Floor Plan produced for WINKWORTH by Mays Floorplans © . Tel 020 3397 4594

Illustration for identification purposes only, not to scale

All measurements are maximum, and include wardrobes and window bays where applicable

This floorplan is for illustration purposes only and is not to scale. The position and size of doors, windows, appliances and other features are approximate.

**Deposit:** £0.00

**Holding Deposit:**

**Council Tax Band:**

Where no figures are shown, we have been unable to ascertain the information. All figures that are shown were correct at the time of printing.

Putney | 020 8788 9295 | [putney@winkworth.co.uk](mailto:putney@winkworth.co.uk)

# Winkworth

for every step...

[winkworth.co.uk](http://winkworth.co.uk)

Winkworth wishes to inform prospective buyers and tenants that these particulars are a guide and act as information only. All our details are given in good faith and believed to be correct at the time of printing but they don't form part of an offer or contract. No Winkworth employee has authority to make or give any representation or warranty in relation to this property. All fixtures and fittings, whether fitted or not are deemed removable by the vendor unless stated otherwise and room sizes are measured between internal wall surfaces, including furnishings.