



ALPINE ROAD, LONDON, NW9

£430,000 LEASEHOLD APPROX 113 YEARS REMAINING

TWO BEDROOM MODERN APARTMENT IN A SOUGHT-AFTER DEVELOPMENT

- **SERVICE CHARGE APPROX £3,125 PER ANNUM**
- **GROUND RENT APPROX £250 PER ANNUM**

Kingsbury | 020 8204 0000 | kingsbury@winkworth.co.uk

Winkworth

for every step...

winkworth.co.uk



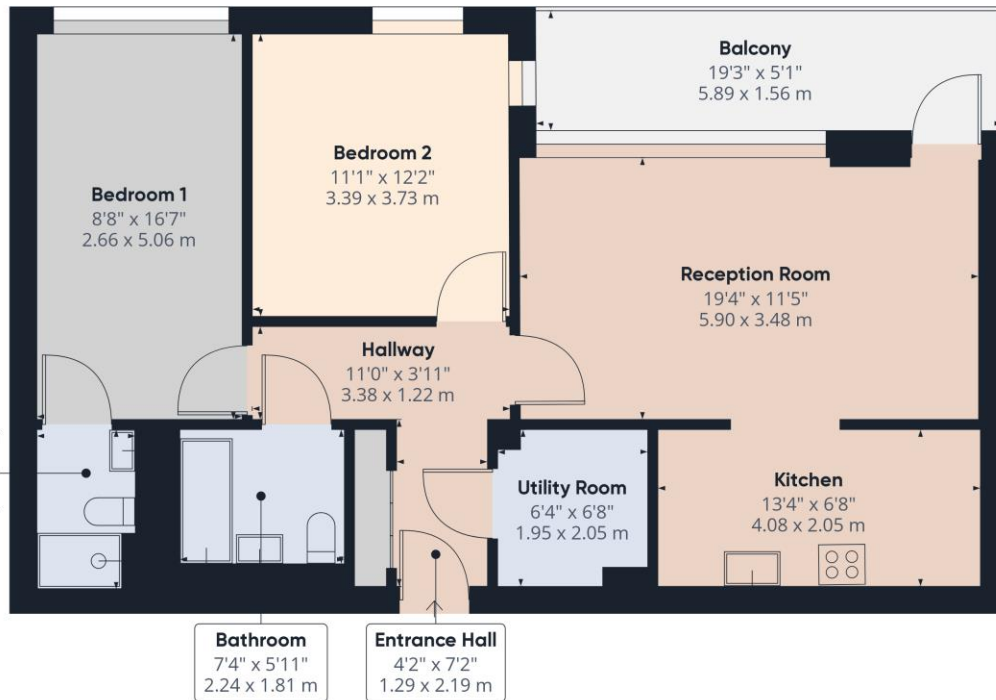
This stunning apartment in Tulip Court offers contemporary living at its finest. Featuring two spacious bedrooms, including a master with an en-suite bathroom, and a second sleek, modern bathroom, this home is perfect for first time buyers or if you are looking to downsize. The open-plan living and dining area boasts ample natural light, complemented by a fully equipped kitchen with high-spec appliances. Step out onto the private balcony to enjoy outdoor space ideal for relaxing or entertaining. Additional benefits include a lift to all floors, parking available via permit, and the property is offered chain-free, providing a hassle-free buying experience. Ideally located near Queensbury Station, commuting is effortless, while Morrisons supermarket and other local amenities are just a short stroll away, ensuring convenience at your doorstep. Combining comfort, style, and an unbeatable location, this apartment is an exceptional place to call home.





Winkworth

for every step...



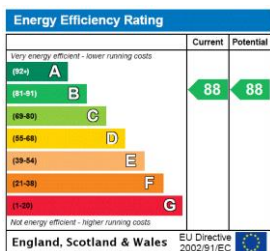
Approximate total area¹⁾
806.4 ft²
74.92 m²

Excluding balconies and terraces

While every attempt has been made to ensure accuracy, all measurements are approximate, not to scale. This floor plan is for illustrative purposes only.

GIRAFFE360

This floorplan is for illustration purposes only and is not to scale. The position and size of doors, windows, appliances and other features are approximate.



Tenure: Leasehold

Term: 113 year and 5 months

Service Charge: £3124.82 per annum

Ground Rent: £ 250 Annually (subject to increase)

Council Tax Band: D - Brent

Where no figures are shown, we have been unable to ascertain the information. All figures that are shown were correct at the time of printing.

Kingsbury | 020 8204 0000 | kingsbury@winkworth.co.uk

Winkworth

for every step...

winkworth.co.uk

Winkworth wishes to inform prospective buyers and tenants that these particulars are a guide and act as information only. All our details are given in good faith and believed to be correct at the time of printing but they don't form part of an offer or contract. No Winkworth employee has authority to make or give any representation or warranty in relation to this property. All fixtures and fittings, whether fitted or not are deemed removable by the vendor unless stated otherwise and room sizes are measured between internal wall surfaces, including furnishings.