



LEDBURY ROAD, W11

£375 PER WEEK (£1,625 PCM) Unfurnished

A LOVELY BRIGHT ONE DOUBLE BEDROOM FLAT ON THE SECOND FLOOR OF THIS PERIOD BUILDING.

Long Let, 1 Bedroom, 1 Reception Room, 1 Bathroom, Flat/Apartment, Period, Unfurnished, 393 Approx Sq Ft Energy Efficiency Rating: 73

Winkworth



DESCRIPTION:

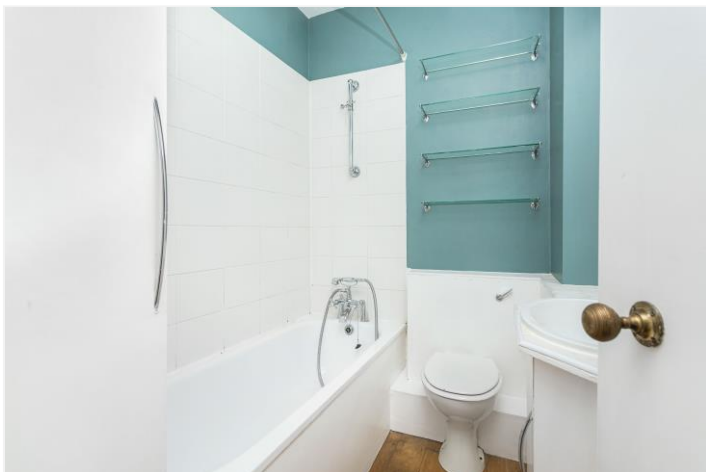
A lovely bright one bedroom flat on the second floor of this attractive period building located in the heart of Notting Hill just off Westbourne Grove. The flat has an open plan kitchen and living room, double bedroom with built in storage and is available unfurnished.

LOCATION:

Ledbury Road runs north from Westbourne Grove with its many fashionable boutiques and restaurants just moments away. The property itself is located just across the road from the double Michelin starred The Ledbury and a short walk from the many shopping and entertainment amenities of Portobello Road.

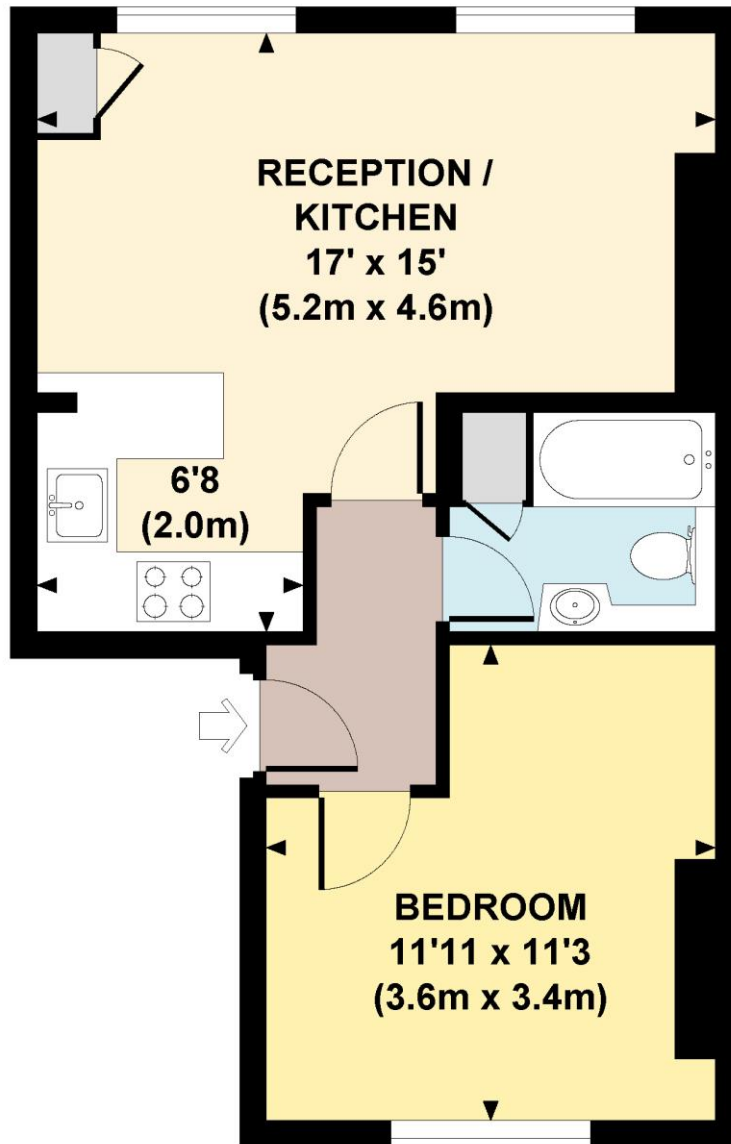
LOCAL AUTHORITY:

Royal Borough of Kensington and Chelsea



LEDBURY ROAD, W11

Approx. gross internal area
393 Sq Ft. / 37 Sq M.

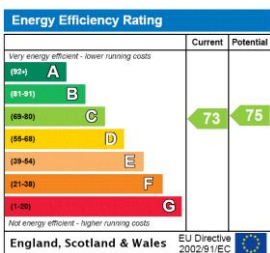


SECOND FLOOR



All measurements are approximate and for illustration purposes only as defined by the RICS Code of Measuring Practice © 2012
Dowling Jones Design www.dowlingjones.com 020 7610 9933

This floorplan is for illustration purposes only and is not to scale. The position and size of doors, windows, appliances and other features are approximate.



Notting Hill | 0207 727 3227 | nottinghill@winkworth.co.uk



winkworth.co.uk

for every step...

winkworth wishes to inform prospective buyers and tenants that these particulars are a guide and act as information only. All our details are given in good faith and believed to be correct at the time of printing but they don't form part of an offer or contract. No Winkworth employee has authority to make or give any representation or warranty in relation to this property. All fixtures and fittings, whether fitted or not are deemed removable by the vendor unless stated otherwise and room sizes are measured between internal wall surfaces, including furnishings.