



HARROW ROAD, W9
£375,000 LEASEHOLD

A BRIGHT ONE BEDROOM SECOND FLOOR FLAT LOCATED ON HARROW ROAD

North Kensington | 020 7792 5000 | northkensington@winkworth.co.uk

Winkworth

for every step...

winkworth.co.uk



DESCRIPTION:

A naturally bright one bedroom second floor apartment offered for sale in excellent condition. The property comprises: spacious reception room, separate large fully fitted kitchen, a very large double bedroom and bathroom. The property is a perfect first home or rental investment.

Situated within walking distance to Westbourne Park Hammersmith & City line underground station and Queens Park Bakerloo/Silverlink Main line station, a little further in the opposite direction. Harrow Road provides multiple shopping facilities along with access to numerous public bus routes. EPC rating C.

AT A GLANCE

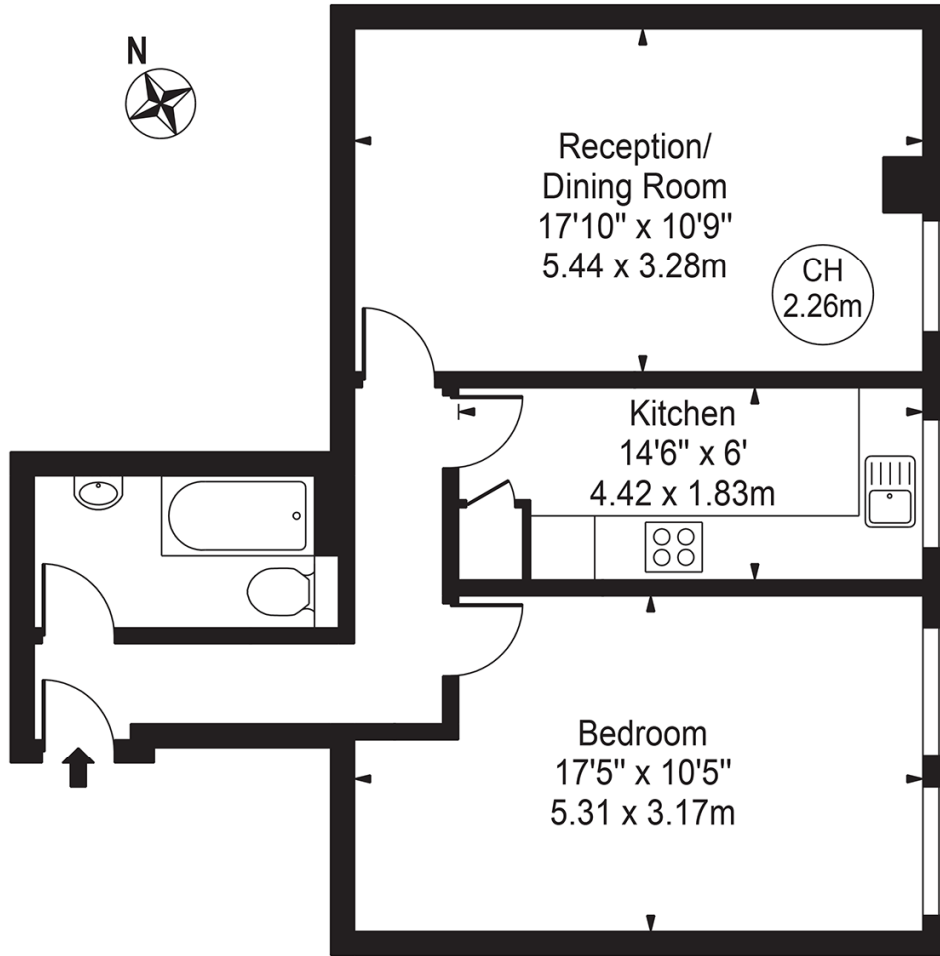
- One Large Double Bedroom
- Second Floor
- Large Separate Kitchen
- Large Living Room
- Plenty of Natural Light
- Leasehold 114 Years Remaining
- Service Charges £1400 pa
- Ground Rent £100 pa
- EPC Rating C





Harrow Road

Approx. Gross Internal Area 580 Sq Ft - 53.88 Sq M

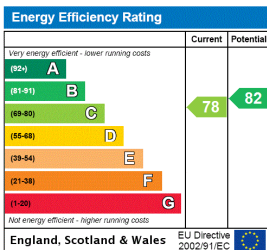


Second Floor

For Illustration Purposes Only - Not To Scale

This floor plan should be used as a general outline for guidance only and does not constitute in whole or in part an offer or contract. Any intending purchaser or lessee should satisfy themselves by inspection, searches, enquiries and full survey as to the correctness of each statement. Any areas, measurements or distances quoted are approximate and should not be used to value a property or be the basis of any sale or let.
Copyright Morriarti Photography & Design LTD

This floorplan is for illustration purposes only and is not to scale. The position and size of doors, windows, appliances and other features are approximate.



North Kensington | 020 7792 5000 | northkensington@winkworth.co.uk



for every step...

winkworth.co.uk

Winkworth wishes to inform prospective buyers and tenants that these particulars are a guide and act as information only. All our details are given in good faith and believed to be correct at the time of printing but they don't form part of an offer or contract. No Winkworth employee has authority to make or give any representation or warranty in relation to this property. All fixtures and fittings, whether fitted or not are deemed removable by the vendor unless stated otherwise and room sizes are measured between internal wall surfaces, including furnishings.