



WALLACE CLOSE, READING, BERKSHIRE, RG5 3HW
£1,300 PER MONTH UNFURNISHED

**TWO BEDROOM FIRST FLOOR MAISONETTE
 LOCATED IN WOODLEY. AVAILABLE 18TH
 OCTOBER.**

Reading | 0118 4022 300 | reading@winkworth.co.uk

Winkworth

for every step...

winkworth.co.uk



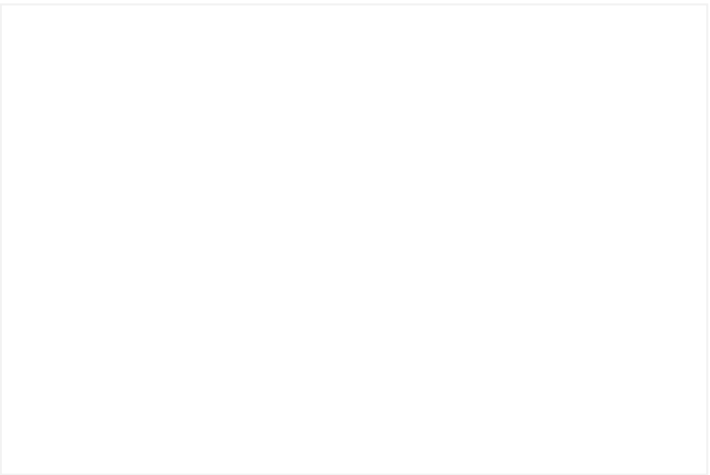
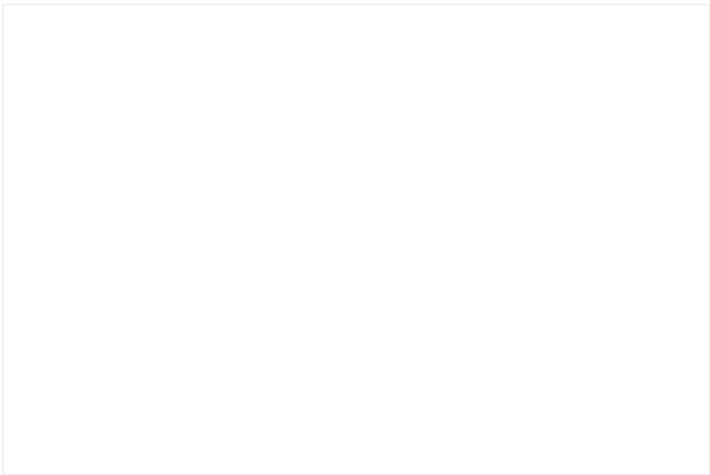
DESCRIPTION:

Two bedroom first floor maisonette located in a popular close in Woodley overlooking Southlake. The property comprises two double bedrooms both with built in wardrobes, living room, separate kitchen, three piece bathroom and the property benefits from storage cupboards. On road residents parking available. Available 18th October 2025. Unfurnished.

AT A GLANCE

- Two bedroom maisonette
- Two double bedrooms
- Council tax band C
- On road residents parking
- Available 18th October
- Unfurnished



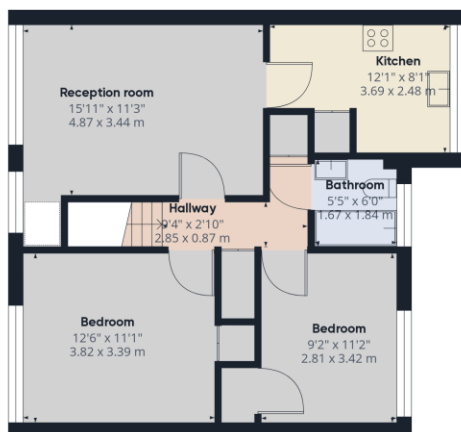




Approximate total area⁽¹⁾

646.16 ft²
60.03 m²

Ground Floor



Floor 1

(1) Excluding balconies and terraces

While every attempt has been made to ensure accuracy, all measurements are approximate, not to scale. This floor plan is for illustrative purposes only.

Calculations are based on RICS IPMS 3C standard.

GIRAFFE360

This floorplan is for illustration purposes only and is not to scale. The position and size of doors, windows, appliances and other features are approximate.

Score	Energy rating	Current	Potential
92+	A		
81-91	B		
69-80	C		78 C
55-68	D		
39-54	E	49 E	
21-38	F		
1-20	G		

Deposit: £1,500.00

Holding Deposit: £300.00

Council Tax Band: C

Where no figures are shown, we have been unable to ascertain the information. All figures that are shown were correct at the time of printing.

Reading | 0118 4022 300 | reading@winkworth.co.uk

Winkworth

for every step...

winkworth.co.uk

Winkworth wishes to inform prospective buyers and tenants that these particulars are a guide and act as information only. All our details are given in good faith and believed to be correct at the time of printing but they don't form part of an offer or contract. No Winkworth employee has authority to make or give any representation or warranty in relation to this property. All fixtures and fittings, whether fitted or not are deemed removable by the vendor unless stated otherwise and room sizes are measured between internal wall surfaces, including furnishings.