



Rockley Court, Rockley Road, Brook Green, W14

£380,000 Leasehold

A stylish one bedroom flat with the benefit of a designated off-street parking space, within a purpose built block.

Reception Room | Open Plan Kitchen | Bedroom | Bathroom | Off Street Parking Space | 421 Sq Ft / 39 Sq M | Council Tax Band B | EPC Rating Band D

Winkworth



LOCATION

Rockley Court is located towards the northern end of Rockley Road, ideal for the numerous amenities on offer in Shepherd's Bush and those of Westfield London. The closest station to the property is Shepherd's Bush, which provides both Underground and London Overground services. A further selection of pubs and restaurants are also on offer in Brook Green.

DESCRIPTION

Offered in good order throughout, the accommodation comprises entrance hall, reception room with open plan kitchen, bedroom and bathroom. The property further benefits from a designated parking space and access to a secure bicycle storage area.





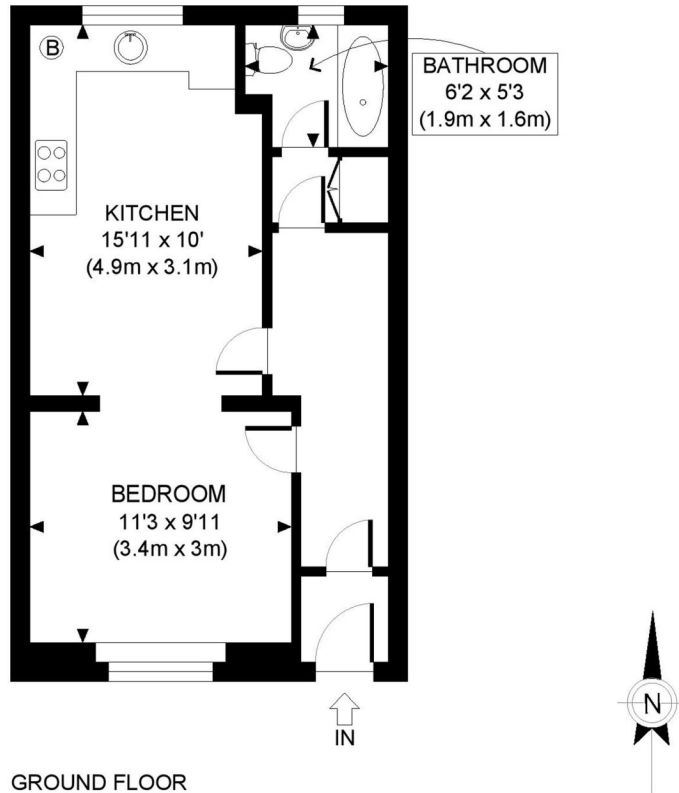
LOCAL AUTHORITY
Hammersmith & Fulham

TENURE
Leasehold.

PRICE: £380,000 Leasehold



Energy Efficiency Rating		Current	Potential
Very energy efficient - lower running costs			
(92+)	A		
(81-91)	B		
(69-80)	C		75
(55-68)	D	67	
(39-54)	E		
(21-38)	F		
(1-20)	G		
Not energy efficient - higher running costs			
England, Scotland & Wales		EU Directive 2002/91/EC	



GROUND FLOOR
GROSS INTERNAL
FLOOR AREA 421 SQ FT

APPROX. GROSS INTERNAL FLOOR AREA: 421 SQ FT/ 39 SQM

PROPERTY PHOTO PLANS.CO.UK
ONE STOP SHOP FOR PROPERTY MARKETING

This plan is for illustrative purposes only and should be used as such by any prospective client. Whilst every attempt has been made to ensure the accuracy of the Floor Plan contained here, measurements of the doors, windows, rooms and any other items are approximate and no responsibility is taken for any errors, omissions, or misstatement. The services, systems and appliances shown have not been tested and no guarantee as to the operability or efficiency can be given.

The displayed square footage is taken from the floor plans with measurements created using the Royal Institute of Chartered Surveyors' Code of Practice for Measuring. These measurements are approximate and included for illustrative purposes only. Winkworth does not make any representation as to the accuracy of these measurements and you should seek to verify them for yourself. Winkworth accept no liability for any loss you may suffer if you rely on these measurements.

Hammersmith | 0207 371 4466 | hammersmith@winkworth.co.uk



for every step...

Under the Property Misdescriptions Act 1991, these Particulars are a guide and act as information only. All details are given in good faith and are believed to be correct at time of printing. Winkworth give no representation as to their accuracy and potential purchasers or tenants must satisfy themselves by inspection or otherwise as to their correctness. No employee of Winkworth has authority to make or give any representation or warranty in relation to this property.