



FLAT 47 GREENHAM MILL

MILL LANE NEWBURY RG14 5QW

A modern first floor apartment with balcony on a lovely waterside development.

Situated overlooking the mill stream and a level walk from the town centre. The apartment has security entry system, double bedroom, bathroom, sitting room leading to a balcony and kitchen.

There is one parking space.



Winkworth

AT A GLANCE

- 452 Square feet/ 42 square metres
- Double bedroom
- Sitting room
- Kitchen
- Bathroom
- Balcony
- Parking

UTILITIES

Mains water, electricity and drainage. Electric heating.
Council Tax band B, West Berkshire Council.
EPC Rating C

SITUATION

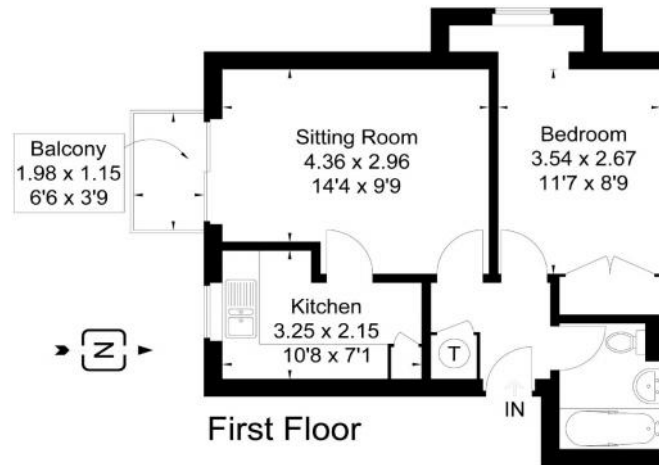
The property is situated a short distance from the town centre and overlooking the mill stream.

DIRECTIONS

Postcode for sat nav RG14 5QW, after turning into Greenham Mill, turn right and block is on the left.

Flat 47 Greenham Mill, Mill Lane, Newbury, RG14 5QW

Approximate Gross Internal Area
42 sq m / 452 sq ft



Newbury Office

43 Northbrook Street, Newbury, Berkshire RG14 1DT
01635 552552 | newbury@winkworth.co.uk

winkworth.co.uk/newbury

Winkworth

See things differently.