



HOLDERS HILL ROAD, LONDON, NW7
£370,000 SHARE OF FREEHOLD

**A WELL-PRESENTED TOP FLOOR FLAT WITH
A SECTION OF GARDEN & GARDEN OFFICE**

Finchley | 020 8349 3388 | finchley@winkworth.co.uk



DESCRIPTION:

Set in a semi-detached house, we are pleased to offer this lovely one double bedroom top floor flat ideally located for local amenities and transport links, such as Mill Hill East underground. The property has been kept to a high standard including a beautiful bespoke Italian kitchen with fitted appliances, marble worktop and marble dining bar, a spacious reception room with amazing views, shower room with designer porcelain tiling, natural oak flooring throughout, allocated garden space, garden room which can also accommodate the 'working from home' lifestyle and a parking space. Would ideally suit a Buy-To-Let Investor or First Time buyer (stamp duty free) and is being sold with a share of the freehold. Offered on chain free basis.

TENURE:

Share of Freehold
Self-managed with the 2 other flats

COUNCIL TAX:

Band C

AT A GLANCE

- Top floor flat
- In good order
- One bedroom
- Reception room with wonderful views
- Modern kitchen & bathroom
- Private section of garden & Garden room
- Parking
- Share of freehold





Winkworth



Winkworth



Winkworth

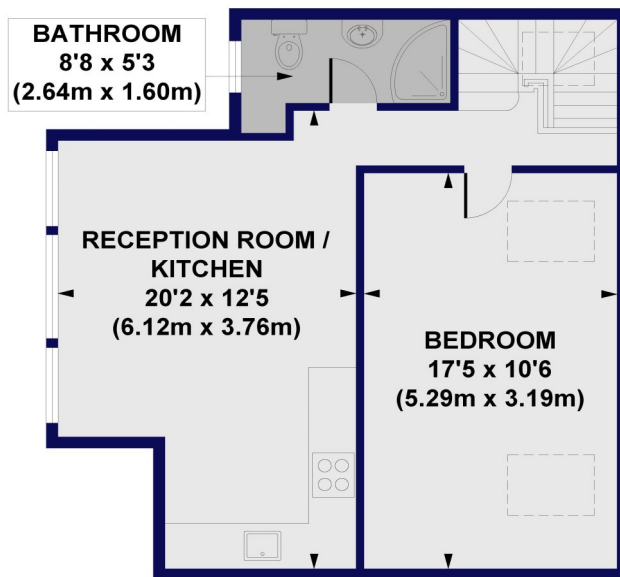


Winkworth

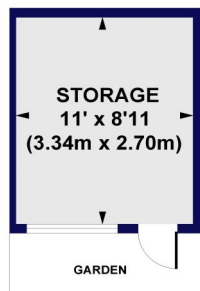


Winkworth

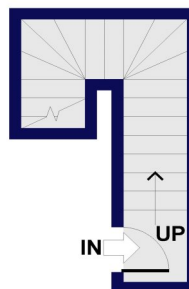
Holdes Hill Road, NW7
 Approx. Gross Internal Floor Area 538 sq. ft / 50.00 sq. m
 (Excluding External Storage)



THIRD FLOOR
GROSS INTERNAL
FLOOR AREA 491 SQ FT



GROUND FLOOR
GROSS INTERNAL
FLOOR AREA 97 SQ FT



SECOND FLOOR
GROSS INTERNAL
FLOOR AREA 47 SQ FT

All measurements of walls, doors, windows, fittings and appliances, including their size and location, are shown as standard sizes and do not constitute any warranty or representation by the seller, their agent or CP Creative. Any intending purchaser must satisfy himself by inspection or otherwise as to the correctness of the information contained in these plans. This plan is for illustrative purposes only and should be used as such by any prospective purchasers.

Winkworth

