



Matheson Road, London, W14

£600,000 Share of Freehold

A smart two double bedroom, two bathroom flat on the first floor of a mid-terrace Victorian house.

Reception Room | Kitchen | 2 Bedrooms | Bathroom | Shower Room | 623 Sq Ft / 58 Sq M | Council Tax band D | EPC Rating Band C

Winkworth

winkworth.co.uk

for every step...



LOCATION

Matheson Road is ideally positioned for the numerous amenities on offer not only within the immediate area, but also those at Westfield London, Kensington High Street and Hammersmith. Various transport links are within close proximity with the nearest stations located at West Kensington, Barons Court and Kensington Olympia. The eagerly anticipated Olympia redevelopment is just moments away, whilst the open spaces of Holland Park, Brook Green and the River Thames are also close by.

DESCRIPTION

Well presented throughout, the flat offers accommodation comprising entrance hall, reception room, kitchen, two double bedrooms, bathroom and shower room.

Share of Freehold with an underlying lease of 125 years from 31 December 2002

Service Charge:- 25 % of any outgoings

Ground Rent:- N/A





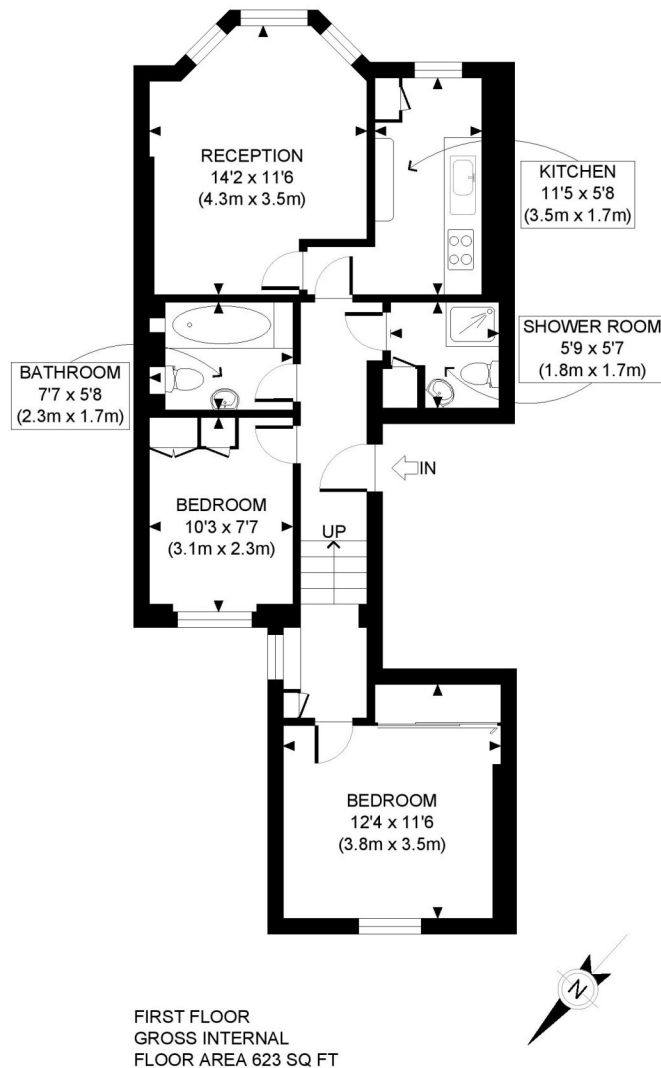
LOCAL AUTHORITY
Hammersmith & Fulham

TENURE
Share of Freehold 102 years 3 months.

PRICE: £600,000 Share of Freehold



Score	Energy rating	Current	Potential
92+	A		
81-91	B		
69-80	C	70 C	80 C
55-68	D		
39-54	E		
21-38	F		
1-20	G		



APPROX. GROSS INTERNAL FLOOR AREA: 623 SQ FT/ 58 SQM

Winkworth

MATHESON ROAD, W14

This plan is for illustrative purposes only and should be used as such by any prospective client. Whilst every attempt has been made to ensure the accuracy of the Floor Plan contained here, measurements of the doors, windows, rooms and any other items are approximate and no responsibility is taken for any errors, omissions, or misstatement. The services, systems and appliances shown have not been tested and no guarantee as to the operability or efficiency can be given.

PROPERTY PHOTO PLANS .CO.UK
THE STEP STEP FOR PROPERTY MEASUREMENTS

The displayed square footage is taken from the floor plans with measurements created using the Royal Institute of Chartered Surveyors' Code of Practice for Measuring. These measurements are approximate and included for illustrative purposes only. Winkworth does not make any representation as to the accuracy of these measurements and you should seek to verify them for yourself. Winkworth accept no liability for any loss you may suffer if you rely on these measurements.

Hammersmith | 0207 371 4466 | hammersmith@winkworth.co.uk

Winkworth

for every step...

Under the Property Misdescriptions Act 1991, these Particulars are a guide and act as information only. All details are given in good faith and are believed to be correct at time of printing. Winkworth give no representation as to their accuracy and potential purchasers or tenants must satisfy themselves by inspection or otherwise as to their correctness. No employee of Winkworth has authority to make or give any representation or warranty in relation to this property.