



MERIVALE ROAD, SW15

**£4,500 PER MONTH UNFURNISHED**

**A very well presented four bedroom, two bathroom terraced house on a residential street in Putney, close to The River**

Putney | 020 8877 1000 | southfields@winkworth.co.uk

**Winkworth**

for every step...

*winkworth.co.uk*





## DESCRIPTION:

This family house has been extended to the rear and the loft and benefits from good proportions throughout.

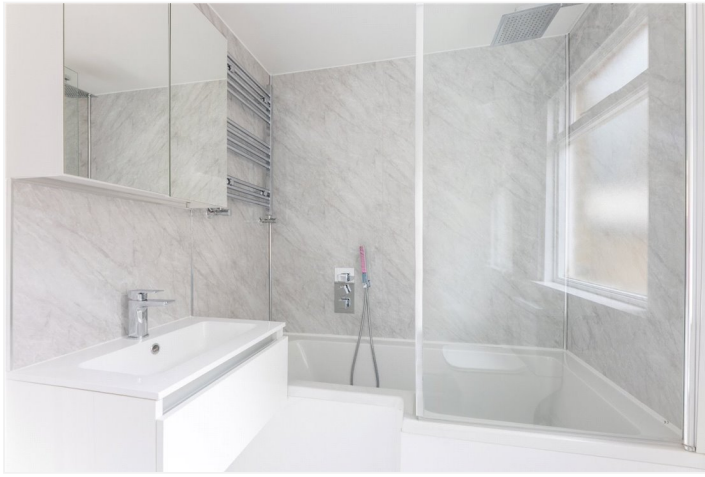
On the ground floor is a spacious double reception room, with original fireplace, wood flooring and high ceilings. Towards the rear is a modern, eat-in kitchen with French doors opening onto a paved 30 ft garden.

The first floor comprises three bedrooms, the largest of which is at the front and benefits from a built-in wardrobe. There is also a contemporary bathroom with bath and shower over. The master bedroom is found on the top floor with plenty of fitted wardrobes and Juliet balcony. Adjacent is a luxurious second bedroom with separate bath and walk-in shower.

Merivale Road is a sought-after tree lined road close to The River in the heart of Putney. Superb transport links are within a short walk of the property including Putney Bridge District Line (0.3 miles), and Putney Mainline Station (0.5 miles). Putney High Street provides a variety of shopping facilities, restaurants, cafes and bars. There is also an excellent choice of private, and state schools.



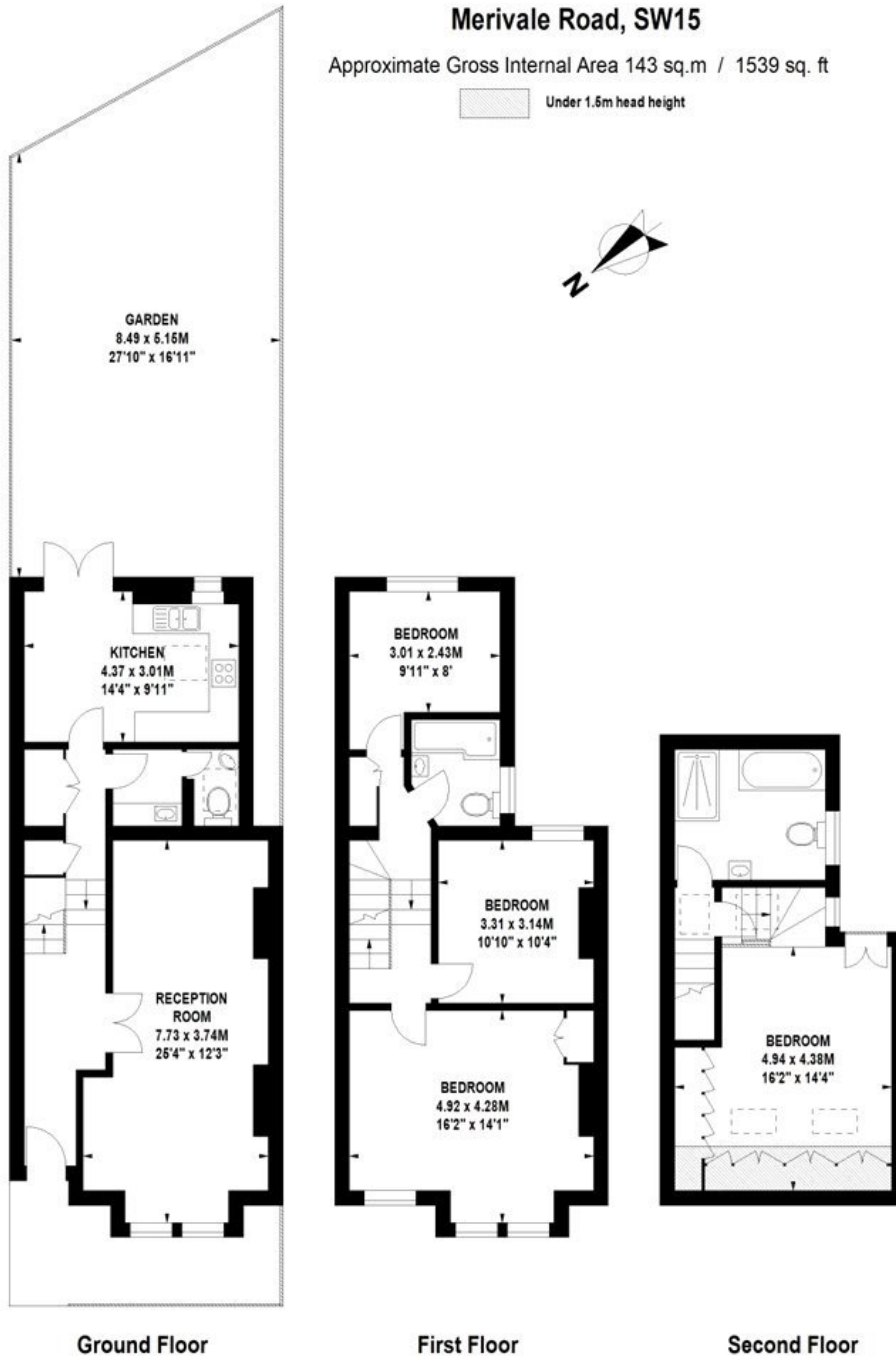




## Merivale Road, SW15

Approximate Gross Internal Area 143 sq.m / 1539 sq. ft

 Under 1.5m head height



Floor Plan produced for WINKWORTH by Mays Floorplans © . Tel 020 3397 4594  
Illustration for identification purposes only, not to scale  
All measurements are maximum, and include wardrobes and window bays where applicable

This floorplan is for illustration purposes only and is not to scale. The position and size of doors, windows, appliances and other features are approximate.

**Deposit:** £0.00

**Holding Deposit:**

**Council Tax Band:**

Where no figures are shown, we have been unable to ascertain the information. All figures that are shown were correct at the time of printing.

Southfields | 020 8877 1000 | southfields@winkworth.co.uk

# Winkworth

for every step...

[winkworth.co.uk](https://www.winkworth.co.uk)

Winkworth wishes to inform prospective buyers and tenants that these particulars are a guide and act as information only. All our details are given in good faith and believed to be correct at the time of printing but they don't form part of an offer or contract. No Winkworth employee has authority to make or give any representation or warranty in relation to this property. All fixtures and fittings, whether fitted or not are deemed removable by the vendor unless stated otherwise and room sizes are measured between internal wall surfaces, including furnishings.