

THE SQUARE, LONDON, SW6

£750,000 LEASEHOLD

A well arranged two double bedroom, two bathroom second floor flat situated within a modern building on a prime Parsons Green location with gated parking.

Fulham & Parsons Green | 020 7731 3388 | fulham@winkworth.co.uk

Winkworth

for every step...

winkworth.co.uk



DESCRIPTION:

The flat covers 959 sq. ft and offers excellent open plan living and with two good size double bedrooms both with built in wardrobes. The larger master bedroom also has the benefit of an ensuite shower room there is also a second bathroom serving the flat. The property is in good condition throughout and benefits from a long lease and a private parking space within the gated part of the development.

The property is ideally situated within the heart of Parsons Green and is perfectly located within immediate proximity to the tube station and a wide array of local shops and restaurants. Nearby Chelsea is also a short walk away and there is also a regular bus service linking the property to central London and Putney.

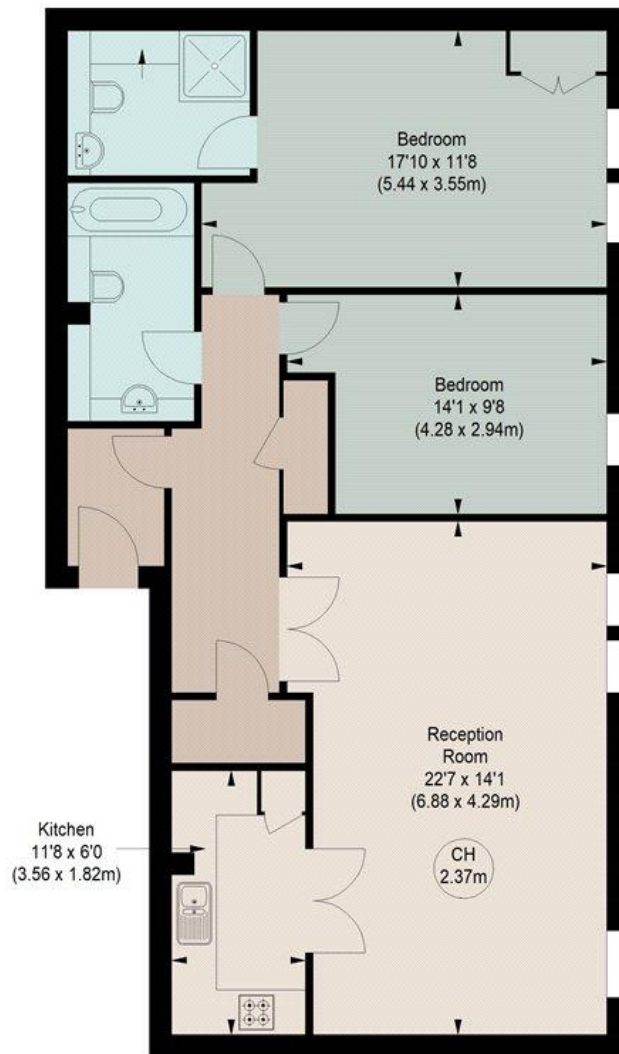
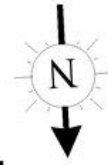




THE SQUARE, SW6

Approximate gross internal area
959 sq ft / 89.09 sq m

Key :
CH - Ceiling Height

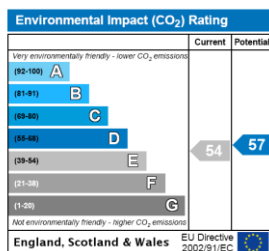
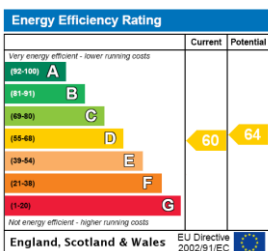


THIRD FLOOR

Illustration For Identification Purposes Only.

All measurements and areas are approximate, not to scale.

This floorplan is for illustration purposes only and is not to scale. The position and size of doors, windows, appliances and other features are approximate.



Tenure: Leasehold

Term: 97 year and 10 months

Service Charge: £0 per annum

Ground Rent: £ 150 Annually (subject to increase)

Council Tax Band: E

Where no figures are shown, we have been unable to ascertain the information. All figures that are shown were correct at the time of printing.

Fulham & Parsons Green | 020 7731 3388 | fulham@winkworth.co.uk

Winkworth

for every step...

winkworth.co.uk

Winkworth wishes to inform prospective buyers and tenants that these particulars are a guide and act as information only. All our details are given in good faith and believed to be correct at the time of printing but they don't form part of an offer or contract. No Winkworth employee has authority to make or give any representation or warranty in relation to this property. All fixtures and fittings, whether fitted or not are deemed removable by the vendor unless stated otherwise and room sizes are measured between internal wall surfaces, including furnishings.