



Haden Square, Berkshire, RG1 6FA

£2,800 per month *Unfurnished*

4  1  3 

Four bedroom townhouse set within an exclusive development built by Bewley homes. The property comprises modern kitchen/diner with integrated appliances, study and cloakroom on the ground floor. Located on the first floor is a spacious living room, three piece bathroom and a bedroom with en suite shower room. Three further bedrooms occupy the second floor with the master bedroom benefitting from an en suite bathroom. Further benefits include garage and rear garden. Available 27th September 2025. Unfurnished.

KEY FEATURES

- Four bedroom townhouse
- Three bathrooms
- Garage
- Close to Reading town centre
- Council tax band E
- Available 27th September
- Unfurnished



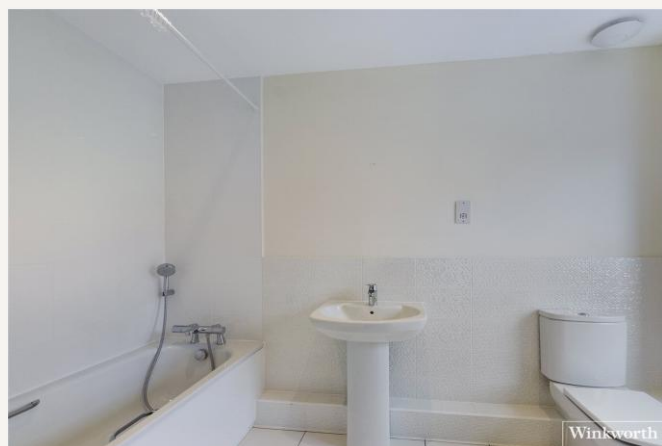
Reading

0118 4022 300 | reading@winkworth.co.uk

Winkworth

for every step...





MATERIAL INFO

Deposit: £3,230.77

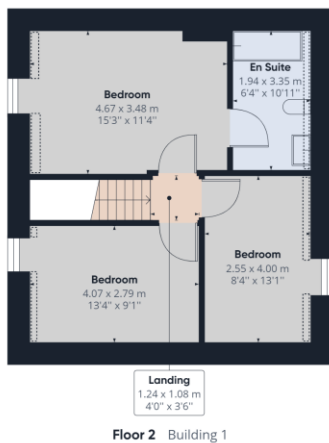
Holding Deposit: £646.15

Council Tax Band: E



Approximate total area⁽¹⁾
 1882.63 ft²
 174.90 m²

Reduced headroom
 25.89 ft²
 2.41 m²

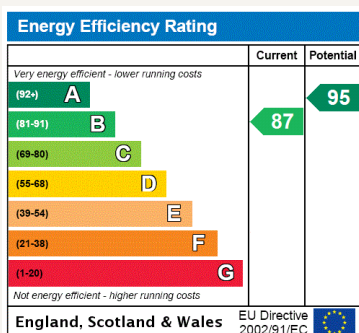


(1) Excluding balconies and terraces

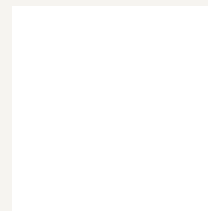
Reduced headroom
 (below 1.5m/4.92ft)

While every attempt has been made to ensure accuracy, all measurements are approximate, not to scale. This floor plan is for illustrative purposes only.

GIRAFFE360



For more information, scan the QR code or visit the link below



<https://www.winkworth.co.uk/rent/property/REA180217>

Where no figures are shown, we have been unable to ascertain the information. All figures that are shown were correct at the time of printing.

Reading

0118 4022 300 | reading@winkworth.co.uk

Winkworth

for every step...

Winkworth wishes to inform prospective buyers and tenants that these particulars are a guide and act as information only. All our details are given in good faith and believed to be correct at the time of printing but they don't form part of an offer or contract. No Winkworth employee has authority to make or give any representation or warranty in relation to this property. All fixtures and fittings, whether fitted or not are deemed removable by the vendor unless stated otherwise and room sizes are measured between internal wall surfaces, including furnishings.