



Winkworth

for every step...

Flagstaff Road, Bankside Gardens, RG2 6BY

£1,450 per month *Unfurnished*



Modern one bedroom fifth floor apartment located within the Bankside Gardens development at Green Park Village. The property comprises open plan living room/kitchen, private balcony, one double bedroom and a three piece bathroom. Allocated undercroft parking space included.

Available now. Unfurnished.

The development benefits from Green Park train station linking Reading with Basingstoke and London. Located Just minutes from central Reading and providing easy access to the M4 at junction 11. The apartment building also has use of The Community Hub which includes concierge, gym, co-working space and cinema room (included within the rental price).

KEY FEATURES

- One bedroom apartment
- Fifth floor (with lift access)
- Private balcony
- Access to the residents community hub
- Council tax band C
- Allocated parking space
- Available now



Winkworth

Reading

0118 4022 300 | reading@winkworth.co.uk

Winkworth

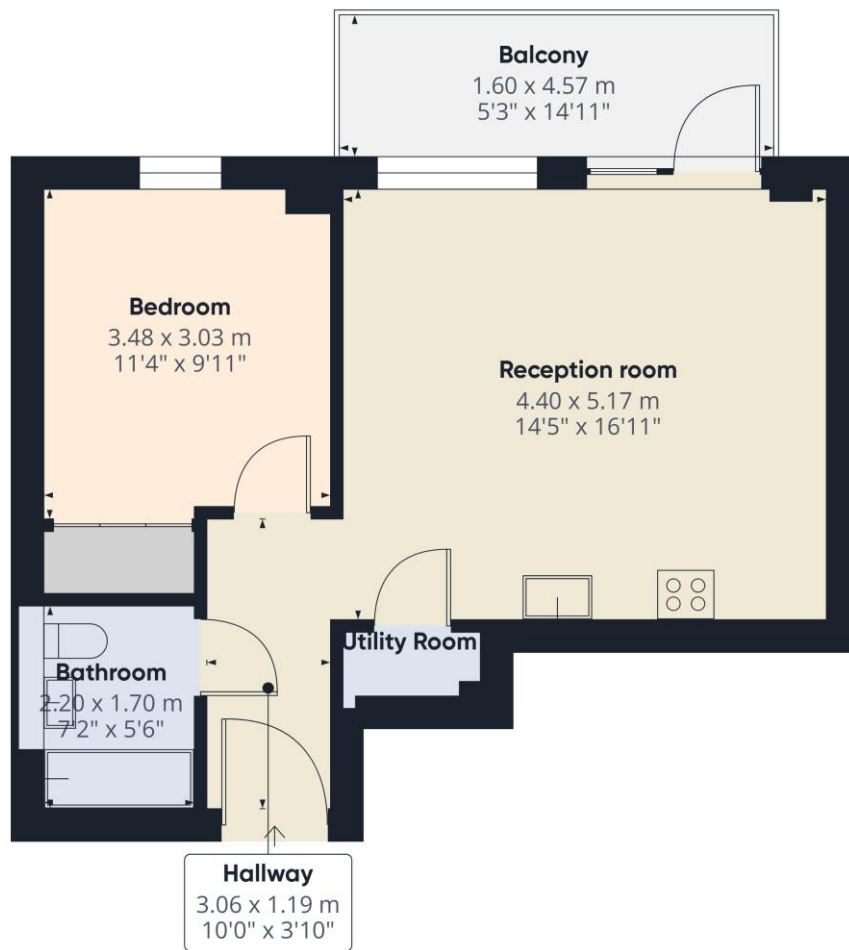
for every step...





MATERIAL INFO

Deposit: £1,673.08
Holding Deposit: £334.61
Council Tax Band: C
EPC rating: B

**Approximate total area⁽¹⁾**

44.2 m²
476 ft²

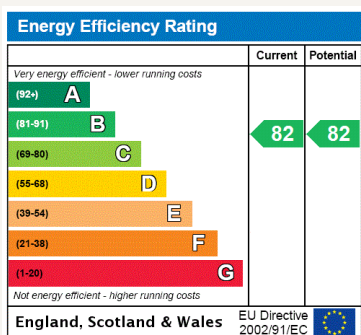
Balconies and terraces

7.3 m²
79 ft²

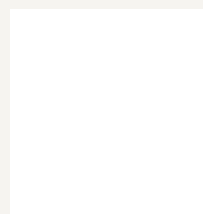
(1) Excluding balconies and terraces

Calculations reference the RICS IPMS 3C standard. Measurements are approximate and not to scale. This floor plan is intended for illustration only.

GIRAFFE360



For more information, scan the QR code or visit the link below



<https://www.winkworth.co.uk/rent/property/REA240594>

Where no figures are shown, we have been unable to ascertain the information. All figures that are shown were correct at the time of printing.

Reading

0118 4022 300 | reading@winkworth.co.uk

Winkworth

for every step...