

GATESTONE ROAD, SE19
£1,500 PER MONTH FURNISHED

MODERN ONE BEDROOM FLAT FOR RENT

Crystal Palace | 02038693222 | crystalpalace@winkworth.co.uk

Winkworth

for every step...

winkworth.co.uk



DESCRIPTION:

Winkworth is pleased to offer this modern one bedroom flat for rent located a short walk to Crystal Palace Triangle.

The property comprises good sized modern fitted kitchen, shower room with storage, bedroom and spacious reception room with space to fine.

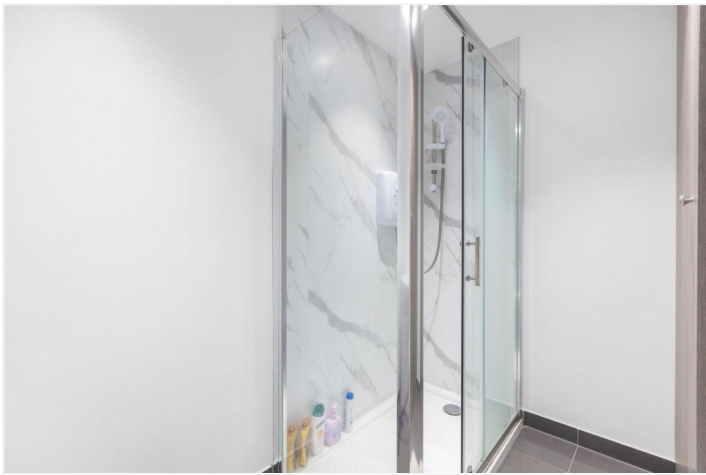
The property has been finished to a modern specification throughout, ifs offered furnished & available end of September.

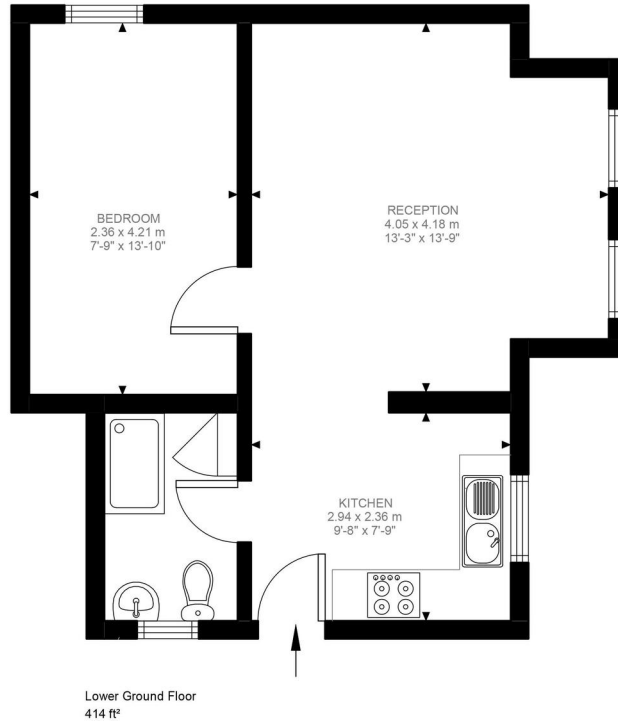
The property is ideally located only a short walk to Crystal Palace Tringle which offers an abundance of independent shops, cafes, bars & restaurants. Gipsy Hill & Crystal Palace Station are both within easy reach

AT A GLANCE

- One bedroom
- Basement flat
- Shower room
- Semi-open plan kitchen
- Modern finish throughout
- Furnished
- Holding Deposit: £346.15 (1 weeks rent)
- Deposit: £1,730.77 (5 weeks rent)







Lower Ground Floor
414 ft²

Gatestone Road, SE19
Approximate Gross Internal Area
38.46 SQ.M / 414 SQ.FT

Illustration for identification purposes only. Not to scale.
Floor Plan Drawn According To RICS Guidelines.

This floorplan is for illustration purposes only and is not to scale. The position and size of doors, windows, appliances and other features are approximate.

Deposit: £0.00

Holding Deposit:

Council Tax Band:

Where no figures are shown, we have been unable to ascertain the information. All figures that are shown were correct at the time of printing.

Crystal Palace | 02038693222 | crystalpalace@winkworth.co.uk

Winkworth

for every step...

winkworth.co.uk

Winkworth wishes to inform prospective buyers and tenants that these particulars are a guide and act as information only. All our details are given in good faith and believed to be correct at the time of printing but they don't form part of an offer or contract. No Winkworth employee has authority to make or give any representation or warranty in relation to this property. All fixtures and fittings, whether fitted or not are deemed removable by the vendor unless stated otherwise and room sizes are measured between internal wall surfaces, including furnishings.