



NEW KINGS ROAD, LONDON, SW6 £675,000 LEASEHOLD

DESCRIPTION:

A fantastic two double bedroom, split level, second floor flat located in the heart of Parsons Green, spanning just shy of 750 sq. ft.

Fulham & Parsons Green | 020 7731 3388 | fulham@winkworth.co.uk

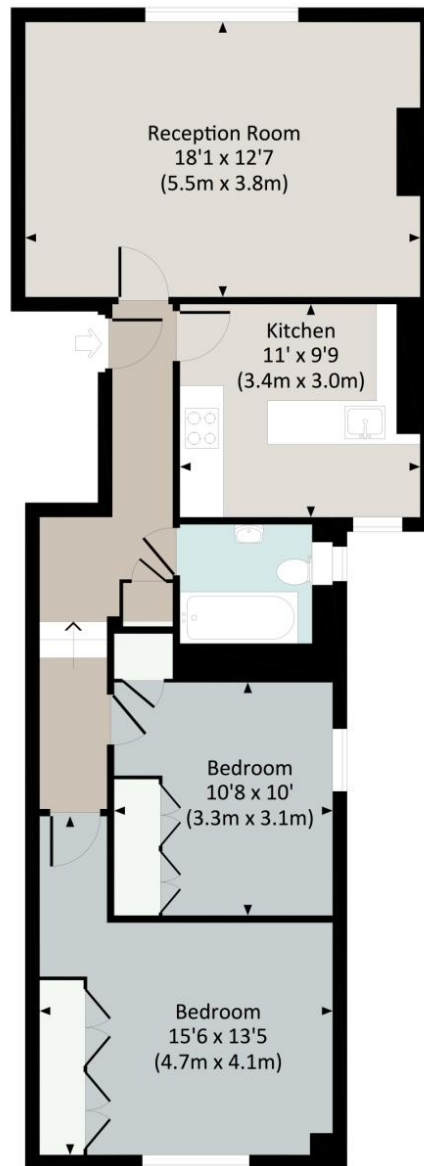
Winkworth

for every step...

winkworth.co.uk

NEW KINGS ROAD, SW6

Approx. gross internal area
733 Sq Ft. / 68.1 Sq M.



SECOND FLOOR



All measurements have been made in accordance with RICS Code of Measuring Practice which are approximate only and only for illustrative purposes. For the avoidance of doubt, Dowling Jones Design shall not be liable for any reliance on these measurements. © 2015 www.dowlingjones.com 020 7610 9933

This floorplan is for illustration purposes only and is not to scale. The position and size of doors, windows, appliances and other features are approximate.

Fulham & Parsons Green | 020 7731 3388 | fulham@winkworth.co.uk

Winkworth

for every step...

winkworth.co.uk

Winkworth wishes to inform prospective buyers and tenants that these particulars are a guide and act as information only. All our details are given in good faith and believed to be correct at the time of printing but they don't form part of an offer or contract. No Winkworth employee has authority to make or give any representation or warranty in relation to this property. All fixtures and fittings, whether fitted or not are deemed removable by the vendor unless stated otherwise and room sizes are measured between internal wall surfaces, including furnishings.