



EDMESTON CLOSE, LONDON, E9
£1,750 PER MONTH

**A WELL PRESENTED ONE BEDROOM APARTMENT
 WITHIN WALKING DISTANCE OF VICTORIA PARK.**

Hackney | 020 8986 4216 | hackney@winkworth.co.uk

Winkworth

Tenant Fees Apply: Details of fees for tenant referencing, tenancy agreement admin fees and renewal fees are available on the Winkworth website and the link can be found with the displayed rent for the property. Tenants should ensure they are fully conversant with these upfront fees and other costs that are involved at the outset of the tenancy before making an offer to rent and your local Winkworth office will provide written details upon request.

winkworth.co.uk

See things differently



DESCRIPTION:

A beautifully modernised one-bedroom apartment in pristine condition, offering 421 square feet of stylish living space. The property features elegant wooden flooring throughout and double-glazed windows that flood the interior with natural light. Highlights include a generously sized double bedroom, a tastefully appointed reception room, a spacious kitchen, and a contemporary three-piece bathroom suite.

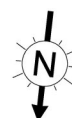
Winkworth



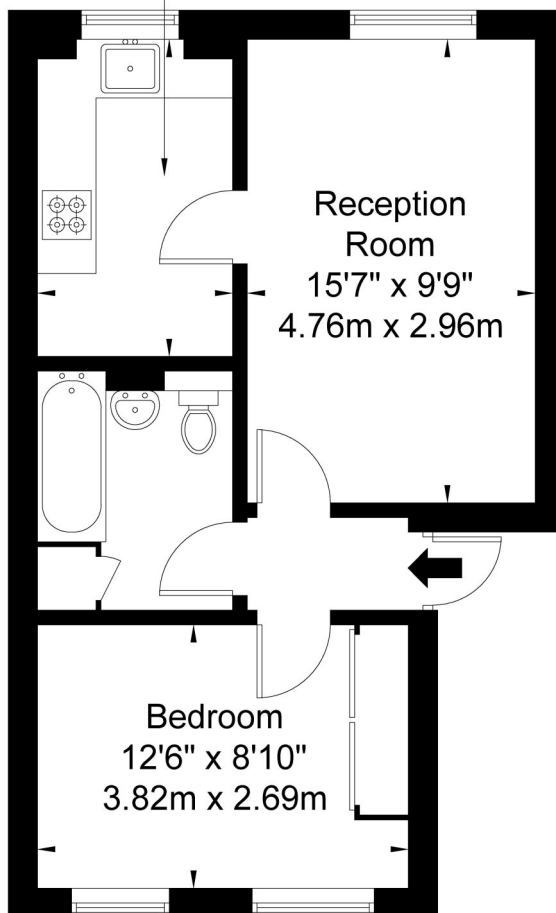
Winkworth

Edmeston Close E9 5TL

Approx Gross Internal Area = 39.2 sq m / 421 sq ft



Kitchen
10'8" x 6'7"
3.24m x 2.01m



First Floor

Ref

Copyright **BLEUPLAN**

The Floor plan is not to scale and measurements and areas shown are approximate and therefore should be used for illustrative purposes only. The plan has been prepared in accordance with the RICS code of Measuring Practice and whilst we have confidence in the information produced it must not be relied on. If there is any aspect of particular importance, you should carry out or commission your own inspection of the property.
Copyright @ BLEUPLAN

This floorplan is for illustration purposes only and is not to scale. The position and size of doors, windows, appliances and other features are approximate.

Hackney | 020 8986 4216 | hackney@winkworth.co.uk

Winkworth

[winkworth.co.uk](https://www.winkworth.co.uk)

See things differently

Winkworth wishes to inform prospective buyers and tenants that these particulars are a guide and act as information only. All our details are given in good faith and believed to be correct at the time of printing but they don't form part of an offer or contract. No Winkworth employee has authority to make or give any representation or warranty in relation to this property. All fixtures and fittings, whether fitted or not are deemed removable by the vendor unless stated otherwise and room sizes are measured between internal wall surfaces, including furnishings.