



Winkworth

Furzehill Road, Hertfordshire, WD6

£725,000 *Freehold*

A Chain Free Four Bedroom Semi Detached  
Family House in South Borehamwood



#### KEY FEATURES

- 4 Bedrooms
- Two Receptions
- 1449 Square Feet
- Chain Free
- South Borehamwood
- Guest Cloakroom
- Garage
- Scope To Extend (STPP)



Winkworth



Winkworth

**Borehamwood**

020 8953 8899 | [borehamwood@winkworth.co.uk](mailto:borehamwood@winkworth.co.uk)





Winkworth

Positioned in a slip road, just off Furzehill Road and offered for sale Chain Free is this Four-bedroom semi-detached family house.

Having been in the same family occupation for over fifty years, the property currently provides circa 1500 square feet of well-proportioned accommodation but offers substantial scope to develop and extend, subject to the usual planning consents. to create a bespoke, forever family home

Situated on the desirable South side of Borehamwood the property is within easy reach of main arterial road including the A1, M1 and M25, Borehamwood town centre and station, several Ofsted rated "Good" and "Outstanding" Schools including Monksmead, Kenilworth and Yavneh and bus routes including the 292 and 107.



Winkworth



Winkworth



Winkworth

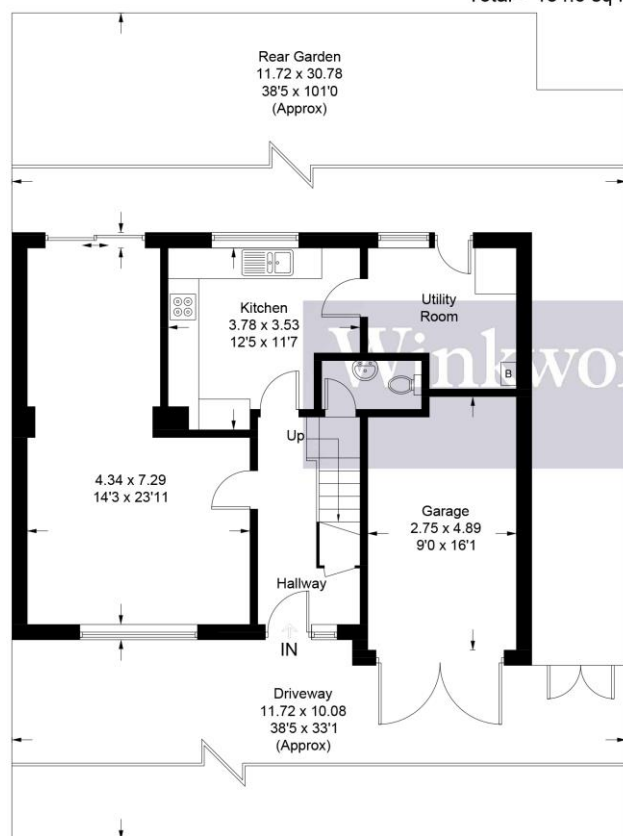




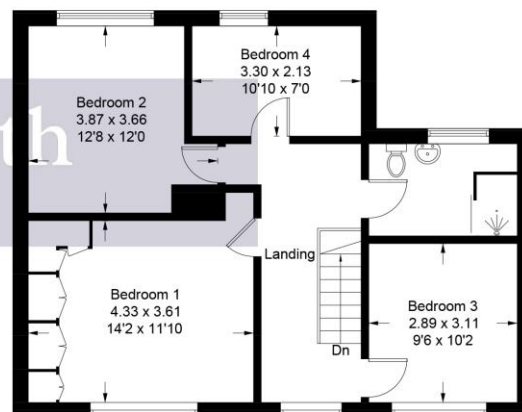
#### MATERIAL INFO

**Tenure:** Freehold  
**Term:** N/A  
**Service Charge:** N/A  
**Ground Rent:** N/A  
**Council Tax Band:** E  
**EPC rating:** D

Approximate Gross Internal Area = 120.4 sq m / 1296 sq ft  
Garage = 14.2 sq m / 153 sq ft  
Total = 134.6 sq m / 1449 sq ft



Ground Floor



First Floor

Illustration for identification purposes only, measurements are approximate, not to scale. Winkworth © 2025 (ID1246887)

For more information, scan the QR code or visit the link below



<https://www.winkworth.co.uk/sale/property/BOR250163>

Where no figures are shown, we have been unable to ascertain the information. All figures that are shown were correct at the time of printing.

## Borehamwood

020 8953 8899 | [borehamwood@winkworth.co.uk](mailto:borehamwood@winkworth.co.uk)