



LAMBARDE SQUARE, GREENWICH, LONDON, SE10
OFFERS IN EXCESS OF £375,000 LEASEHOLD

AN OUTSTANDING AND BEAUTIFULLY PRESENTED, ONE
BEDROOM, 5TH FLOOR APARTMENT THAT IS MUCH
LARGER THAN AVERAGE AT 616 SQ FT, AND HAS BEEN
BEAUTIFULLY RECONFIGURED BY THE CURRENT OWNER!
EWS1 COMPLIANT!

Greenwich | 02030533033 | greenwich@winkworth.co.uk

Winkworth

winkworth.co.uk

See things differently



DESCRIPTION:

An outstanding and beautifully presented, one bedroom, 5th floor apartment that is much larger than average at 616 sq ft, and has been beautifully reconfigured by the current owner! EWS1 COMPLIANT!

The accommodation comprises of a stunning open plan living space that is cleverly divided into its own sections. The stunning and newly fitted bespoke kitchen occupies the main space and features a work bench that runs alongside the curved windows, with lovely views overlooking the square. This is also a great space for anybody looking to work from home! This then leads onto a lovely reception area that has access onto the 14ft balcony. There is also a good sized double bedroom, with a fitted desk and wardrobes. The family bathroom is well presented and there is also extra storage. Benefits include hard wood flooring, double glazing and video entry. Its certainly worth mentioning that within Greenwich Square there are leisure facilities, including a pool, gymnasium and public library (note that membership is not included)

Greenwich Square is a supremely popular development located in East Greenwich, on the corner of Charlton Road and Vanbrugh Hill. This means it is perfectly located for quick access to the town centre, with its fine array of shops and restaurants, but also the O2 arena and Royal Park. Mainline Rail, DLR and riverboat service are all within a short walk. There is NO CHAIN!

AT A GLANCE

- stunning apartment
- one bedroom
- 5th floor (with lift)
- reconfigured and renovated
- newly fitted bespoke kitchen
- c616 sq ft
- large 14ft balcony
- nice views of the square
- hard wood flooring
- Greenwich Square development
- East Greenwich location

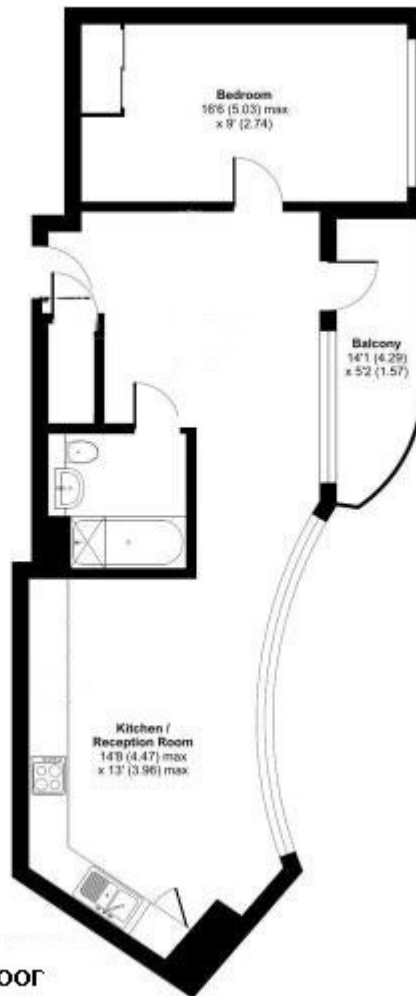




Lambarde Square, London, SE10

Approximate Area = 616 sq ft / 57.2 sq m

For identification only - Not to scale



Fifth Floor



Floor plan produced in accordance with RICS Property Measurement Standards incorporating International Property Measurement Standards (IPMS Residential). © richworth 2023.

This floorplan is for illustration purposes only and is not to scale. The position and size of doors, windows, appliances and other features are approximate.

Greenwich | 02030533033 | greenwich@winkworth.co.uk

Winkworth

winkworth.co.uk

See things differently

Winkworth wishes to inform prospective buyers and tenants that these particulars are a guide and act as information only. All our details are given in good faith and believed to be correct at the time of printing but they don't form part of an offer or contract. No Winkworth employee has authority to make or give any representation or warranty in relation to this property. All fixtures and fittings, whether fitted or not are deemed removable by the vendor unless stated otherwise and room sizes are measured between internal wall surfaces, including furnishings.