

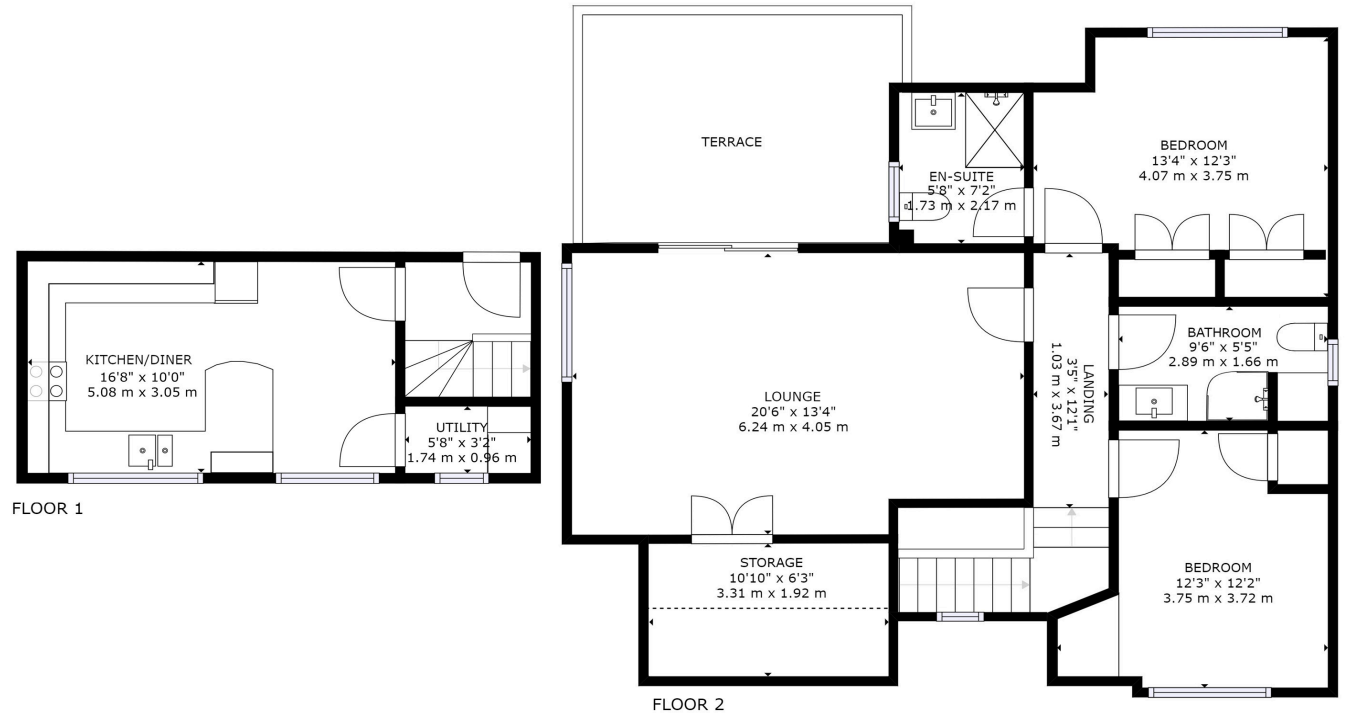


6 The Mariners, Clifton Road

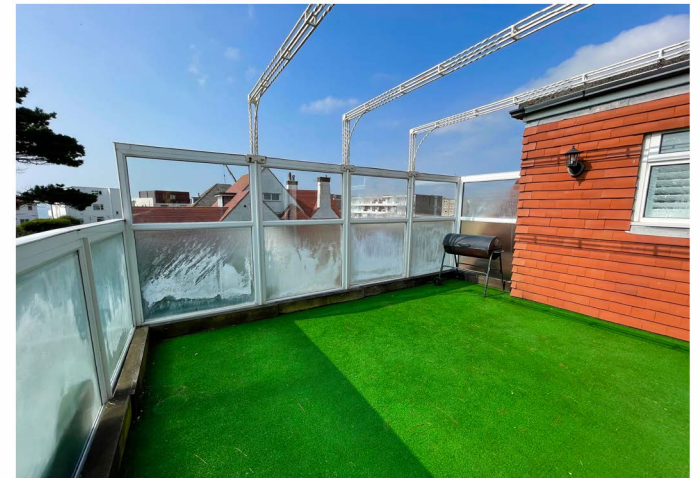
Southbourne BH6 3PA

ASKING PRICE £330,000

Winkworth



GROSS INTERNAL AREA
 FLOOR 1: 229 sq. ft, 21 m², FLOOR 2: 787 sq. ft, 73 m²
 EXCLUDED AREAS: , TERRACE: 153 sq. ft, 14 m²
 TOTAL: 1016 sq. ft, 94 m²
 SIZES AND DIMENSIONS ARE APPROXIMATE, ACTUAL MAY VARY.





ASKING PRICE - £330,000 Leasehold

01202 434365 | southbourne@winkworth.co.uk

A spacious two bed maisonette with sea views and a beautiful private roof terrace, just a 2 minute walk to the cliff top zig zag and the golden sandy beach.

- Two Bedrooms
- Modern Bathroom
- Spacious Kitchen
- Utility Room
- Allocated Parking
- Excellent Location
- En-suite Shower Room

Maintenance: TBC, Ground Rent: Peppercorn, No Short Term / Holiday Lets, Pets: TBC





Southbourne is located on the south-east suburb of Bournemouth and neighbours both Christchurch and Boscombe. The area enjoys its own shopping experience with the main high street offering a varied range of shops, restaurants and bars. Southbourne itself enjoys the award-winning blue flag sandy beaches with a level walk promenade extending from Hengistbury Head through to Sandbanks.

A local bus service provides links to Bournemouth and Poole with a different shopping experience together with a number of restaurants and bars providing a vibrant nightlife. A local train station provides direct links to Southampton, Southampton Airport and London which is approximately 100 miles away. Bournemouth International airport (6 miles) offers a varied schedule of flights to a number of European destinations.

Winkworth Southbourne

29 Southbourne Grove, Bournemouth, Dorset, BH6 3QT

01202 434365 | southbourne@winkworth.co.uk

winkworth.co.uk/southbourne

Winkworth