



FLAT 1, CHEYNE PLACE, CHELSEA, LONDON, SW3
£595,000

A MODERN, RECENTLY REFURBISHED ONE BEDROOM FLAT IN A CONVENIENT LOCATION FOR THE AMENITIES OF THE KINGS ROAD

DESCRIPTION:

A recently refurbished one bedroom flat located in a prestigious building with porter in the heart of Chelsea. A bright and spacious flat perfect as a pied-a-terre or a first time buy.

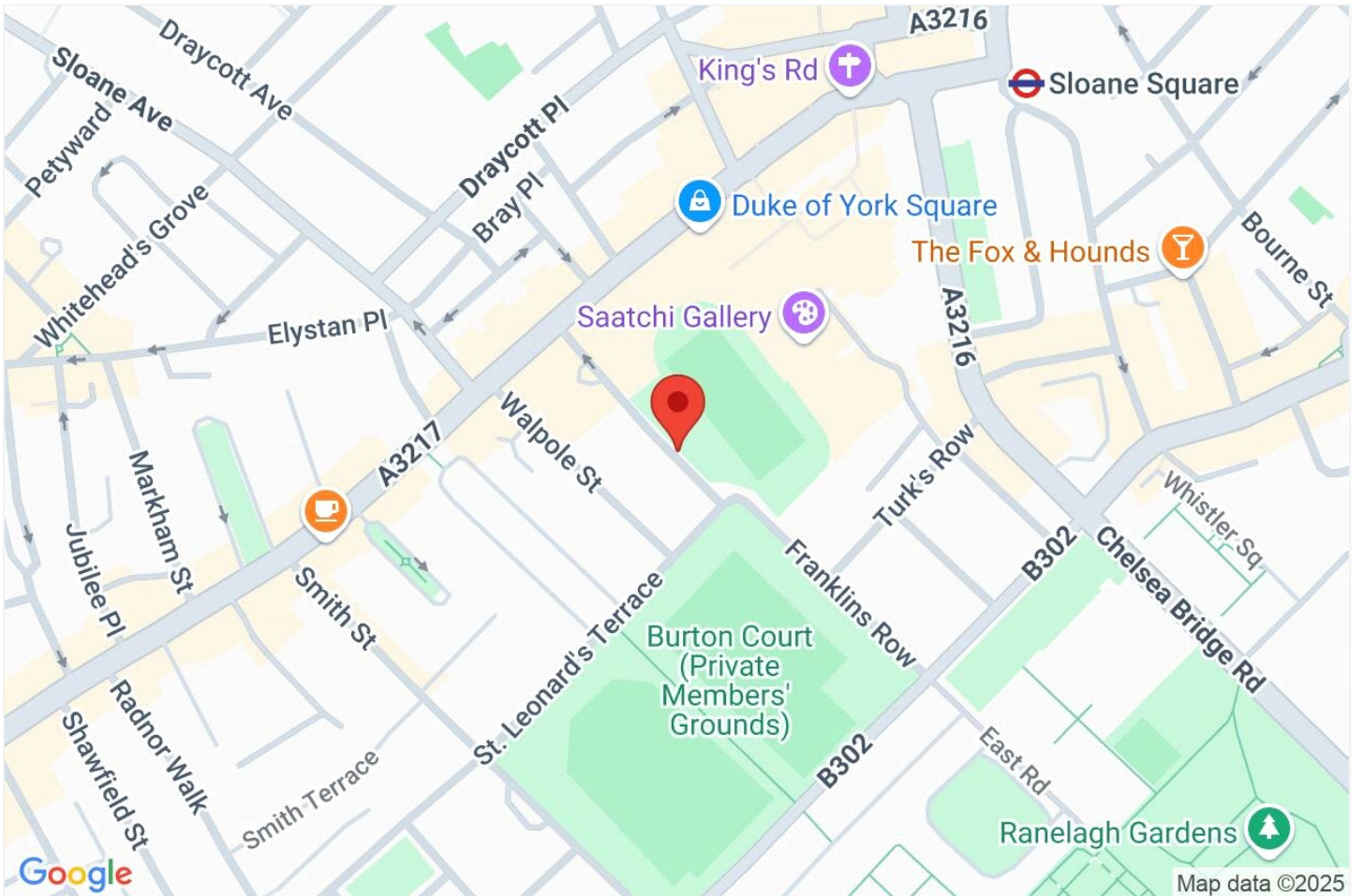
Knightsbridge & Chelsea | 0207 589 6616 | knightsbridge@winkworth.co.uk

Winkworth

for every step...

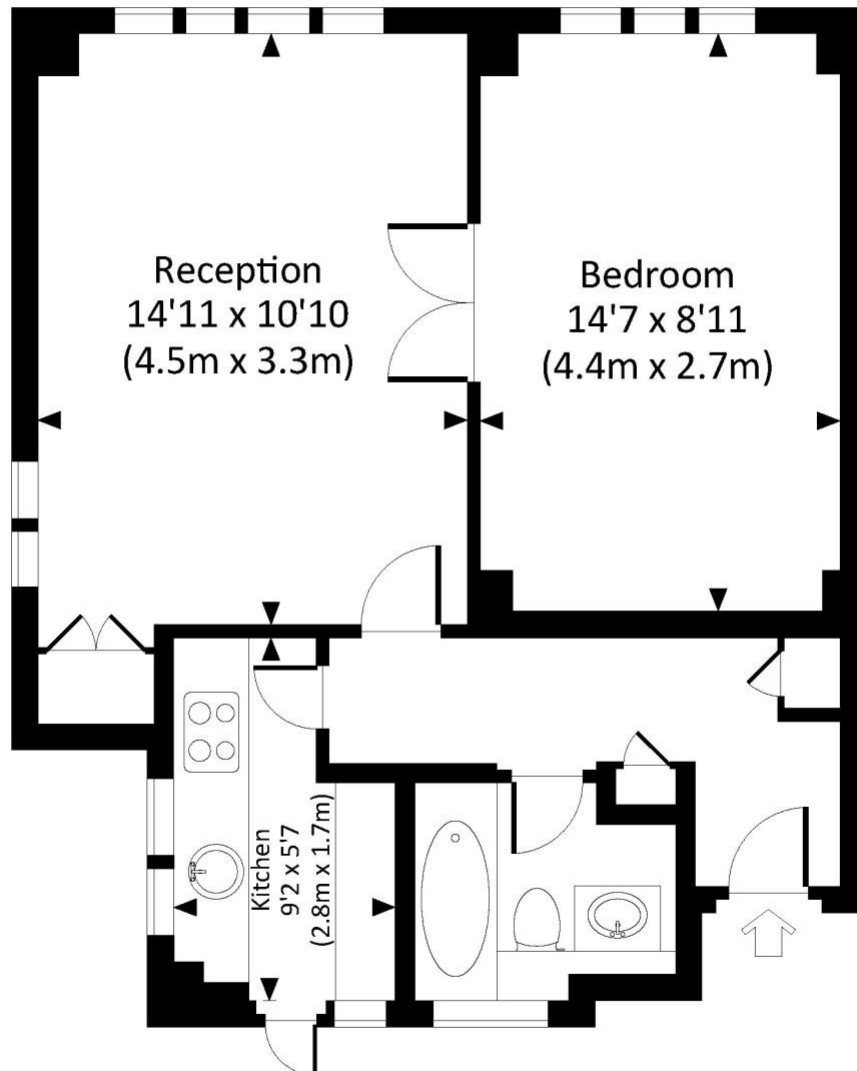
winkworth.co.uk





CHEYNE PLACE, SW3

Approx. gross internal area
457 Sq.Ft. / 42.5 Sq.M.

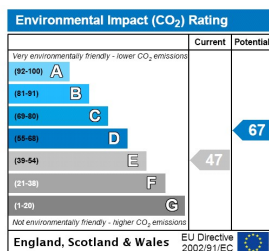
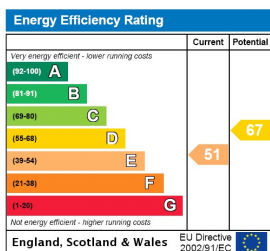


LOWER GROUND FLOOR



All measurements have been made in accordance with RICS Code of Measuring Practice which are approximate only and only for illustrative purposes. For the avoidance of doubt, Dowling Jones Design shall not be liable for any reliance on these measurements. © 2015 www.dowlingjones.com 020 7610 9933

This floorplan is for illustration purposes only and is not to scale. The position and size of doors, windows, appliances and other features are approximate.



Tenure: Leasehold

Term: 133 year and 10 months

Service Charge: £4842.2 per annum

Ground Rent: Peppercorn

Council Tax Band: E

Where no figures are shown, we have been unable to ascertain the information. All figures that are shown were correct at the time of printing.

Winkworth

Knightsbridge & Chelsea | 0207 589 6616 | knightsbridge@winkworth.co.uk

for every step...

winkworth.co.uk

Winkworth wishes to inform prospective buyers and tenants that these particulars are a guide and act as information only. All our details are given in good faith and believed to be correct at the time of printing but they don't form part of an offer or contract. No Winkworth employee has authority to make or give any representation or warranty in relation to this property. All fixtures and fittings, whether fitted or not are deemed removable by the vendor unless stated otherwise and room sizes are measured between internal wall surfaces, including furnishings.