

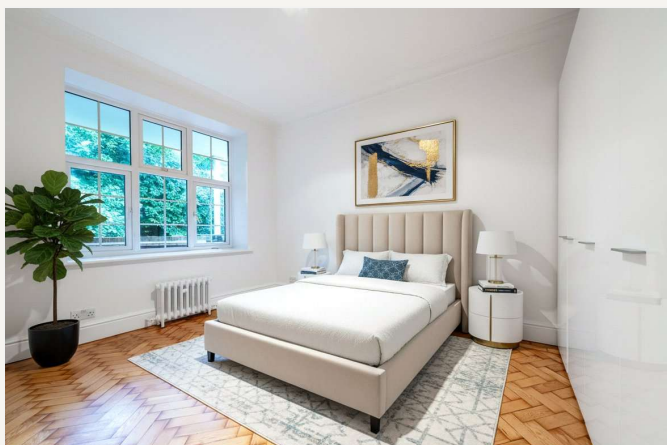


Mandeville Court, NW3

£525,000 *Share of Freehold*



A two-bedroom apartment set on the first floor of a popular purpose-built block on Finchley Road. The property has recently undergone decoration throughout and offers a fully equipped separate kitchen, a shower room and a bright reception leading on to the terrace which overlooks the communal gardens. The property has original parquet flooring throughout. Mandeville Court is ideally situated for many transport links including Finchley Road & Frognal Overground Station (0.1 miles), Finchley Road (Jubilee & Metropolitan lines) and West Hampstead Underground Stations (Jubilee line), and West Hampstead Thames Link (0.4 miles).



Winkworth West Hampstead

020 7483 7602 | westhampstead@winkworth.co.uk

Winkworth

for every step...



KEY FEATURES

- Two Double Bedrooms
- Shower Room
- Reception/Dining Room
- Fully Equipped Separate Kitchen
- Terrace
- Communal Gardens

Notes:

Images have been virtually staged using CGI and are for illustrative purposes only. They are intended to convey the concept and vision for the property. They are for guidance only, and may alter and do not necessarily represent a true and accurate depiction of the finished property.



MATERIAL INFO

Tenure: Share of Freehold

Term: 979 year and 11 months

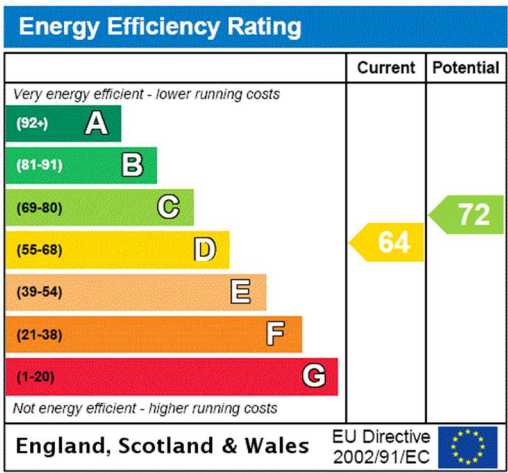
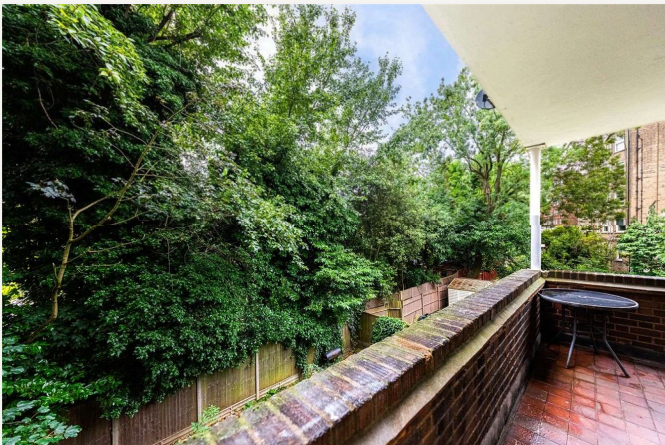
Service Charge: £4,792.16 per annum

Service Charge Note:

Council Tax Band: D

EPC rating: D



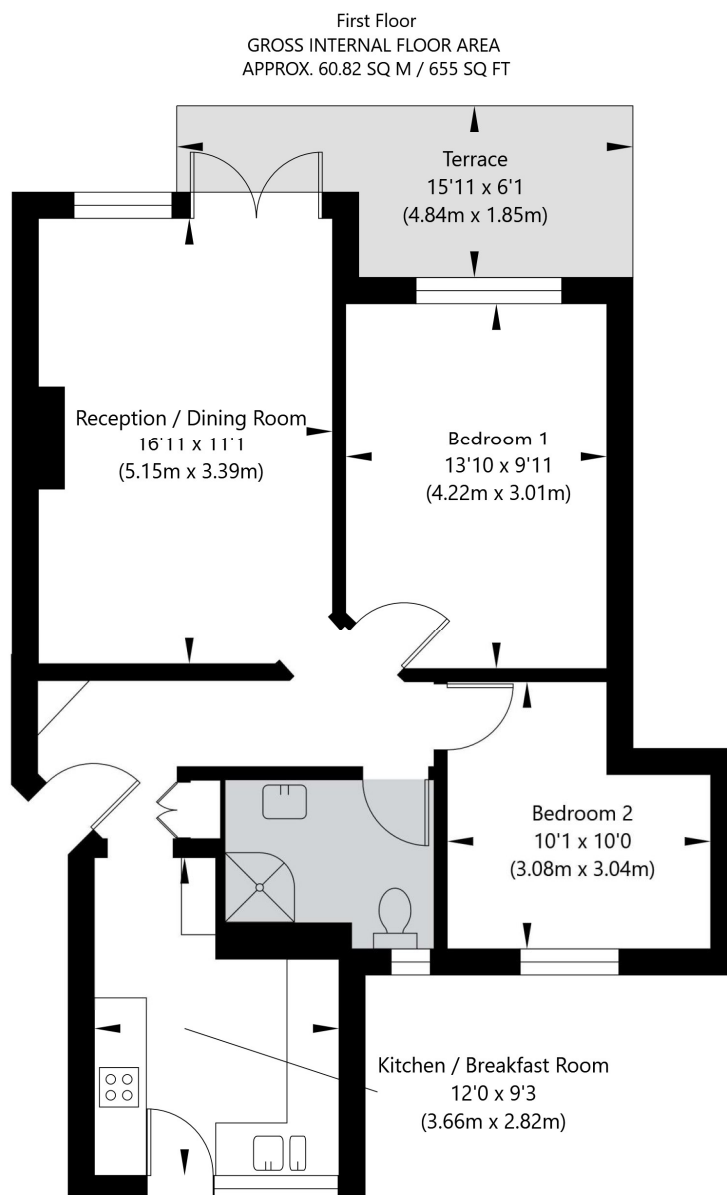


For more information, scan the QR code or visit the link below



<https://www.winkworth.co.uk/sale/property/WHP260001>

Mandeville Court, Finchley Road, NW3 6HB



APPROXIMATE GROSS INTERNAL FLOOR AREA 60.82 SQ M / 655 SQ FT
THIS FLOOR PLAN IS FOR ILLUSTRATIVE PURPOSES ONLY AND
SHOULD BE USED FOR THIS PURPOSE BY PROSPECTIVE APPLICANTS AS ITS NOT TO SCALE.

(c) AMBERSHORE PIX LIMITED / PHOTO - VIDEO - FLOOR PLANS / 0800 999 1577 / WWW.AMBERSHOREPIX.CO.UK

Where no figures are shown, we have been unable to ascertain the information. All figures that are shown were correct at the time of printing.

Winkworth West Hampstead

020 7483 7602 | westhampstead@winkworth.co.uk

Winkworth

for every step...

Winkworth wishes to inform prospective buyers and tenants that these particulars are a guide and act as information only. All our details are given in good faith and believed to be correct at the time of printing but they don't form part of an offer or contract. No Winkworth employee has authority to make or give any representation or warranty in relation to this property. All fixtures and fittings, whether fitted or not are deemed removable by the vendor unless stated otherwise and room sizes are measured between internal wall surfaces, including furnishings.