

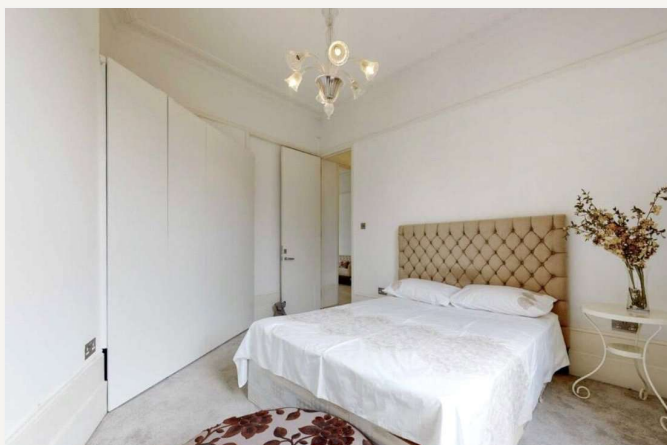


Warwick Avenue, London, W9

£765,000 *Leasehold*



A very well-presented two bedroom apartment, situated on the raised ground floor of this charming period conversion in Little Venice. This attractive property benefits from a high ceilings, a generous reception/dining room with a feature fireplace and bay window, a separate kitchen, double bedroom, an additional single bedroom and a modern bathroom. Warwick Avenue is conveniently located close (approx.. 0.5 Miles) to the boutique shops, cafes on Clifton Road , the famous Regents Canal and within approximately 0.2 miles from Warwick Avenue Underground Station (Bakerloo line).



Winkworth Maida Vale

020 7289 1692 | maidavale@winkworth.co.uk

Winkworth

for every step...



KEY FEATURES

- Two Bedrooms
- Family Bathroom
- Reception/Dining Room
- Kitchen
- Ground Floor
- Leasehold



MATERIAL INFO

Tenure: Leasehold

Lease Expiry Date: 01/01/2172

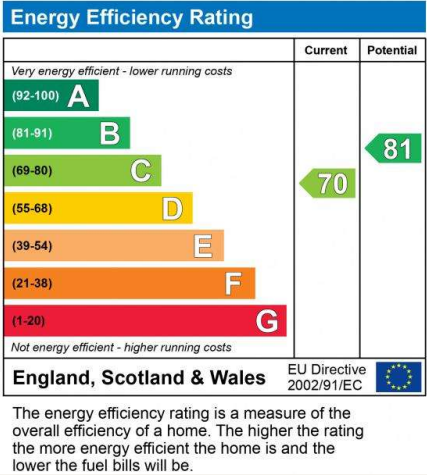
Service Charge: £1,543.64 per annum

Ground Rent: £0 Annually (subject to increase)

Council Tax Band: F

EPC rating: C





For more information, scan the QR code or visit the link below



<https://www.winkworth.co.uk/sale/property/MDV160010>



Raised Ground floor

(Ceiling height 3.26 m)

Warwick Avenue, W9

Gross Internal Area: 738 ft² ... 68.6 m²

Where no figures are shown, we have been unable to ascertain the information. All figures that are shown were correct at the time of printing.

Winkworth Maida Vale

020 7289 1692 | maidavale@winkworth.co.uk

Winkworth

for every step...

Winkworth wishes to inform prospective buyers and tenants that these particulars are a guide and act as information only. All our details are given in good faith and believed to be correct at the time of printing but they don't form part of an offer or contract. No Winkworth employee has authority to make or give any representation or warranty in relation to this property. All fixtures and fittings, whether fitted or not are deemed removable by the vendor unless stated otherwise and room sizes are measured between internal wall surfaces, including furnishings.