



MILLFIELDS ROAD, LONDON, E5
£550,000 LEASEHOLD

A BRIGHT THREE BEDROOM PERIOD CONVERSION FIRST FLOOR FLAT IN THE HEART OF CLAPTON

Hackney | 020 8986 4216 | hackney@winkworth.co.uk

Winkworth



DESCRIPTION:

This exceptional three-bedroom first floor flat offers a great space and good light throughout and boasts a generous footprint of approximately 712 square feet. The heart of this home is its semi open plan kitchen, living room, and dining room. Sunlight dances through large windows, accentuating the bright ambiance that envelops the entire living space. The expansive living room seamlessly transitions to the dining area, creating an ideal setting for entertaining. The accommodation comprises three double bedrooms offering ample room for wardrobes and personalization. The property also benefits from a three-piece family bathroom and is being sold on a Chain Free basis.

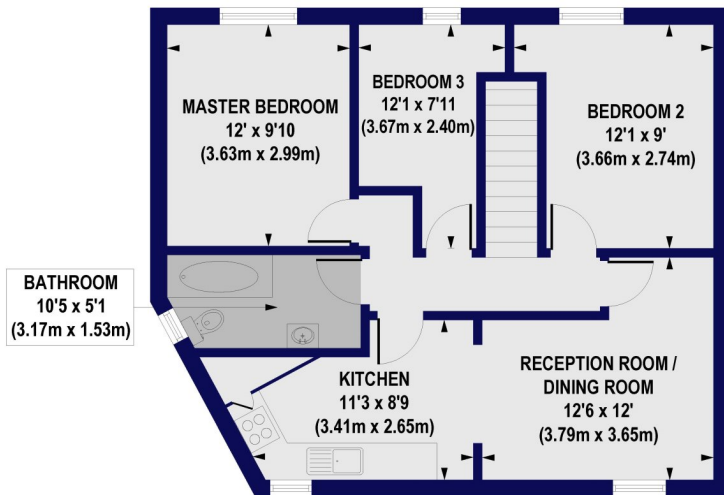
The local area beckons with its abundant amenities and convenient transport links. Millfields Road places you at the heart of a vibrant community, brimming with boutique shops, quaint cafes, and local markets, perfect for leisurely strolls and social interactions. Excellent transport connections, including nearby Overground stations and bus routes, effortlessly connect you to the bustling heart of the city, ensuring that you're always within easy reach of London's rich tapestry of culture and commerce.

Winkworth

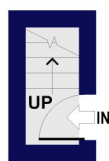


Winkworth

Millfields Road, E5
 Approx. Gross Internal Floor Area 712 sq. ft / 66.20 sq. m



FIRST FLOOR
 GROSS INTERNAL
 FLOOR AREA 694 SQ FT

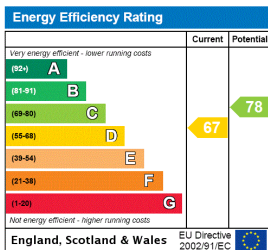


GROUND FLOOR
 GROSS INTERNAL
 FLOOR AREA 18 SQ FT

All measurements of walls, doors, windows, fittings and appliances, including their size and location, are shown as standard sizes and do not constitute any warranty or representation by the seller, their agent or CP Creative. Any intending purchaser must satisfy himself by inspection or otherwise as to the correctness of the information contained in these plans. This plan is for illustrative purposes only and should be used as such by any prospective purchasers.

Winkworth

This floorplan is for illustration purposes only and is not to scale. The position and size of doors, windows, appliances and other features are approximate.



Hackney | 020 8986 4216 | hackney@winkworth.co.uk

Winkworth

winkworth.co.uk

See things differently

Winkworth wishes to inform prospective buyers and tenants that these particulars are a guide and act as information only. All our details are given in good faith and believed to be correct at the time of printing but they don't form part of an offer or contract. No Winkworth employee has authority to make or give any representation or warranty in relation to this property. All fixtures and fittings, whether fitted or not are deemed removable by the vendor unless stated otherwise and room sizes are measured between internal wall surfaces, including furnishings.