



GATESTONE ROAD, SE19
£1,500 PER MONTH FURNISHED

BEAUTIFULLY PRESENTED ONE BEDROOM FLAT FOR RENT

Crystal Palace | 02038693222 | crystalpalace@winkworth.co.uk

Winkworth

for every step...

winkworth.co.uk



DESCRIPTION:

Winkworth is pleased to offer this modern one bedroom flat for rent located a short walk to Crystal Palace Triangle.

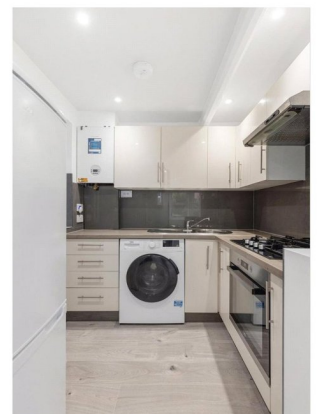
The property comprises entrance hallway, modern shower room with storage, bedroom with good sized wardrobes, spacious reception room with bay window allowing for an abundance of natural light, semi-open plan to modern fitted kitchen.

The property has been finished to a modern specification throughout, if offered furnished & available immediately.

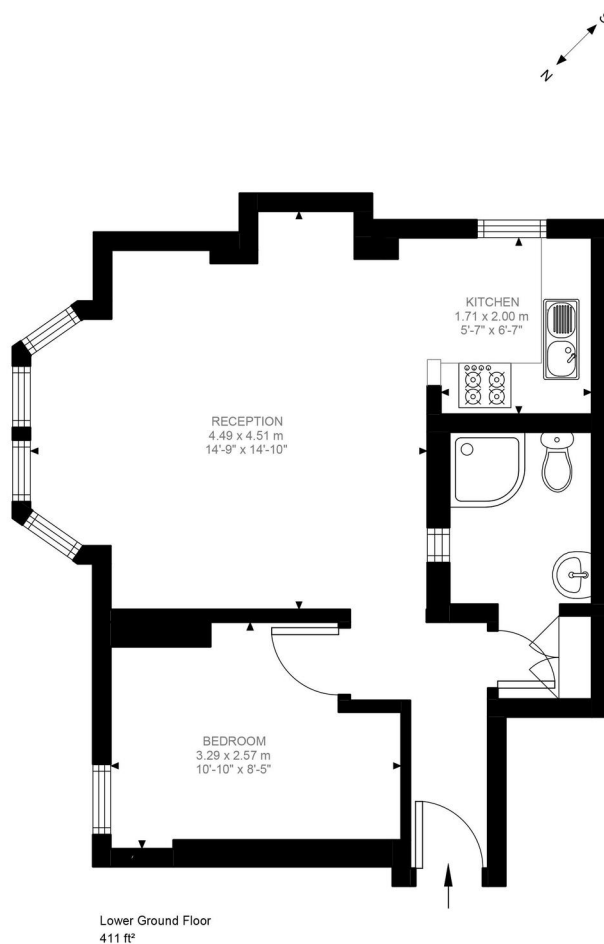
The property is ideally located only a short walk to Crystal Palace Triangle which offers an abundance of independent shops, cafes, bars & restaurants. Gipsy Hill & Crystal Palace Station are both within easy reach.

AT A GLANCE

- One bedroom
- Basement flat
- Shower room
- Semi-open plan kitchen
- Modern finish throughout
- Furnished
- Holding Deposit: £346.15 (1 weeks rent)
- Deposit: £1,730.77 (5 weeks rent)
- Croydon Council Tax Band B: £1,929.26pa







Gatestone Road, SE19
Approximate Gross Internal Area
38.23 SQ.M / 411 SQ.FT

Illustration for identification purposes only. Not to scale.
Floor Plan Drawn According To RICS Guidelines.

This floorplan is for illustration purposes only and is not to scale. The position and size of doors, windows, appliances and other features are approximate.

Score	Energy rating	Current	Potential
92+	A		
81-91	B		
69-80	C		77 C
55-68	D	65 D	
39-54	E		
21-38	F		
1-20	G		

Deposit: £0.00

Holding Deposit:

Council Tax Band:

Where no figures are shown, we have been unable to ascertain the information. All figures that are shown were correct at the time of printing.

Crystal Palace | 02038693222 | crystalpalace@winkworth.co.uk

Winkworth

for every step...

winkworth.co.uk

Winkworth wishes to inform prospective buyers and tenants that these particulars are a guide and act as information only. All our details are given in good faith and believed to be correct at the time of printing but they don't form part of an offer or contract. No Winkworth employee has authority to make or give any representation or warranty in relation to this property. All fixtures and fittings, whether fitted or not are deemed removable by the vendor unless stated otherwise and room sizes are measured between internal wall surfaces, including furnishings.