



FLAT 3, BELLE VUE COURT 122D, DEVONSHIRE ROAD, LONDON, SE23
£575,000 SHARE OF FREEHOLD

Forest Hill | | foresthill@winkworth.co.uk



DESCRIPTION:

This elegant two-bedroom apartment blends timeless character with modern comforts. Set on the first floor of a beautiful period property, it offers access to a landscaped communal garden and off-street parking

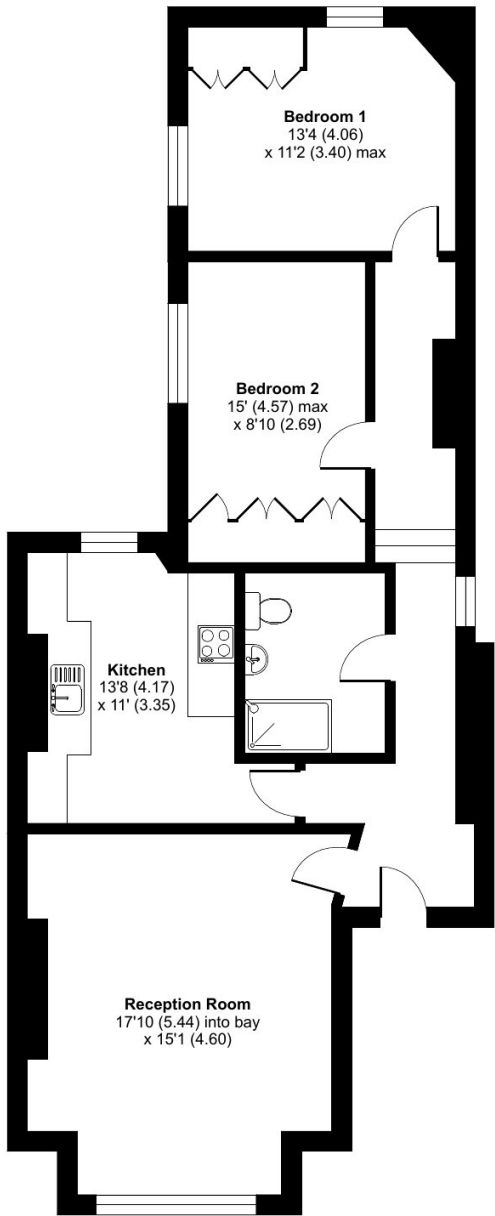




Devonshire Road, London, SE23

Approximate Area = 927 sq ft / 86.1 sq m

For identification only - Not to scale



Floor plan produced in accordance with RICS Property Measurement Standards incorporating International Property Measurement Standards (IPMS2 Residential). © nlc/ecom 2025. Produced for Winkworth Forest Hill and New Cross. REF: 1324300

This floorplan is for illustration purposes only and is not to scale. The position and size of doors, windows, appliances and other features are approximate.

Score	Energy rating	Current	Potential
92+	A		
81-91	B		
69-80	C		
55-68	D		
39-54	E		
21-38	F		
1-20	G		

Tenure: Share of Freehold