



**AVANTGARDE TOWER, 1 AVANTGARDE PLACE, LONDON, E1**  
**£2,350 PER MONTH FURNISHED**

## **A STYLISH SEVENTH FLOOR ONE BEDROOM APARTMENT IN THIS IMPRESSIVE DEVELOPMENT**

**Shoreditch** | 020 7749 7650 | [shoreditch@winkworth.co.uk](mailto:shoreditch@winkworth.co.uk)

**Winkworth**

Tenant Fees Apply: Details of fees for tenant referencing, tenancy agreement admin fees and renewal fees are available on the Winkworth website and the link can be found with the displayed rent for the property. Tenants should ensure they are fully conversant with these upfront fees and other costs that are involved at the outset of the tenancy before making an offer to rent and your local Winkworth office will provide written details upon request.

[winkworth.co.uk](http://winkworth.co.uk)

See things differently





### **DESCRIPTION:**

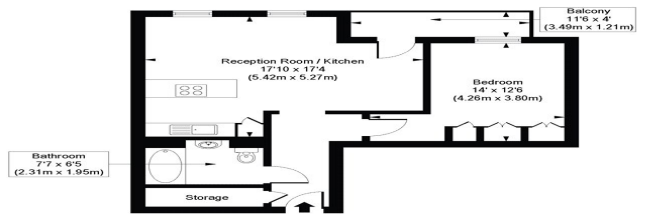
A stylish seventh floor apartment in the impressive Avantgarde development by Shoreditch High Street station. This property comprises one double bedroom, bathroom with shower, open-plan kitchen living room, floor to ceiling glass, wood floors, granite work tops, comfort cooling system and has a high standard finish throughout. The building benefits from communal roof terrace, large gym and concierge service. Offered fully furnished.

**Winkworth**





Avantgarde Place, E1  
 Approx. Gross Internal Floor Area 537 sq. ft / 49.87 sq. m



COMBESLAND AND ASSOCIATES ARCHITECTS LTD. 11, Theobalds Road, London WC1X 8TH. Tel: 020 7490 1234. Email: info@combesland.co.uk





This floorplan is for illustration purposes only and is not to scale. The position and size of doors, windows, appliances and other features are approximate.

Shoreditch | 020 7749 7650 | [shoreditch@winkworth.co.uk](mailto:shoreditch@winkworth.co.uk)



[winkworth.co.uk](http://winkworth.co.uk)

See things differently

Winkworth wishes to inform prospective buyers and tenants that these particulars are a guide and act as information only. All our details are given in good faith and believed to be correct at the time of printing but they don't form part of an offer or contract. No Winkworth employee has authority to make or give any representation or warranty in relation to this property. All fixtures and fittings, whether fitted or not are deemed removable by the vendor unless stated otherwise and room sizes are measured between internal wall surfaces, including furnishings.