



Queensway, W2

£800 per week (£3,466.66 PCM) *Unfurnished or Furnished*



A VERY SPACIOUS AND NEWLY REFURBISHED 2 DOUBLE BEDROOM AND 2 BATHROOMS FLAT ON THE SECOND FLOOR OF THIS POPULAR PORTED BLOCK (WITH LIFT) JUST OFF QUEENSWAY AND ALL THE AREA'S EXCITING NEW DEVELOPMENTS OFFER.



Notting Hill Lettings

0207 727 3227 | nottinghill@winkworth.co.uk

Winkworth

for every step...



Flat comprises - Spacious Hallway, separate fully fitted kitchen, large living room with wood floors and large west facing bay window, master bedroom with fitted storage and ensuite shower room and large separate family bathroom off the hallway.

The property has been refurbished throughout and is offered unfurnished - Heating and hot water also included in the rent and viewings are highly recommended. Corporate let's only please.

Utilities:

Electricity – Mains

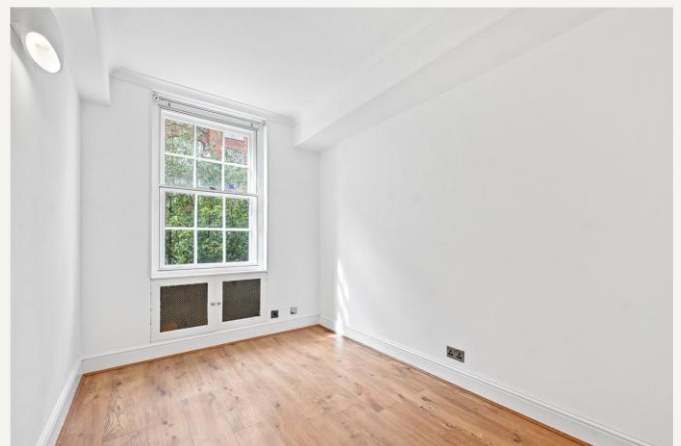
Water – Mains

Sewerage – Mains

Heating – Gas

Broadband <https://checker.ofcom.org.uk/en-gb/broadband-coverage>

Mobile Coverage <https://checker.ofcom.org.uk/en-gb/mobile-coverage>

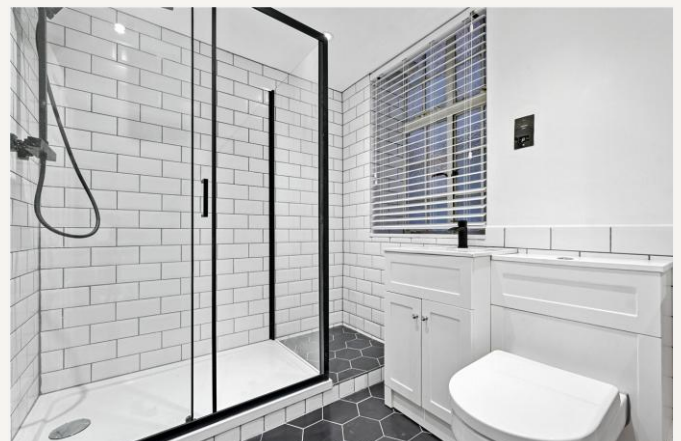


MATERIAL INFO

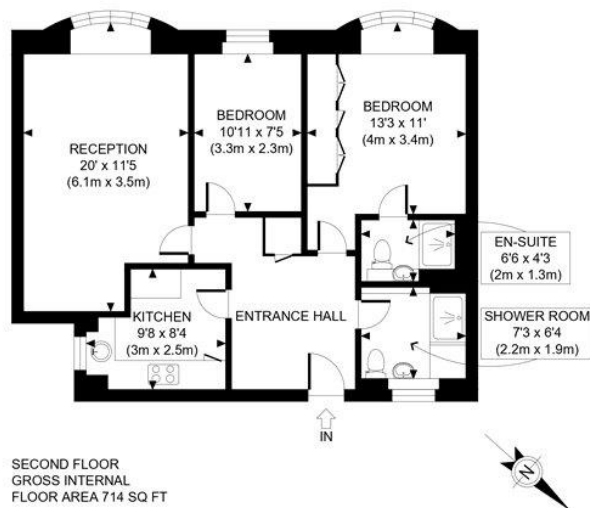
Deposit: £4,000

Holding Deposit: £800

Council Tax Band: Westminster







APPROX. GROSS INTERNAL FLOOR AREA: 714 SQ FT/ 66 SQM

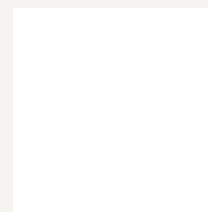
Winkworth

This plan is for illustrative purposes only and should be used as such by any prospective client. Whilst every attempt has been made to ensure the accuracy of the Floor Plan contained here, measurements of the doors, windows, rooms and any other items are approximate and no responsibility is taken for any errors, omissions, or misstatement. The services, systems and appliances shown have not been tested and no guarantee as to the operability or efficiency can be given.

PROPERTY PHOTO PLANS © 2018

For more information, scan the QR code or visit the link below

Score	Energy rating	Current	Potential
92+	A		
81-91	B		
69-80	C	72 C	81 B
55-68	D		
39-54	E		
21-38	F		
1-20	G		



<https://www.winkworth.co.uk/rent/property/NHS250130>

Where no figures are shown, we have been unable to ascertain the information. All figures that are shown were correct at the time of printing.

Notting Hill Lettings

0207 727 3227 | nottinghill@winkworth.co.uk

Winkworth

for every step...

Winkworth wishes to inform prospective buyers and tenants that these particulars are a guide and act as information only. All our details are given in good faith and believed to be correct at the time of printing but they don't form part of an offer or contract. No Winkworth employee has authority to make or give any representation or warranty in relation to this property. All fixtures and fittings, whether fitted or not are deemed removable by the vendor unless stated otherwise and room sizes are measured between internal wall surfaces, including furnishings.