



ST. JULIANS FARM ROAD, WEST NORWOOD, LONDON, SE27
£1,500,000

6/7 BEDROOM DETACHED VICTORIAN HOUSE

West Norwood | 02086700035 | westnorwood@winkworth.co.uk

Winkworth

for every step...

winkworth.co.uk



DESCRIPTION:

A rare opportunity to purchase this substantial- over 3000 sq feet- double fronted, detached Victorian house. Loosely arranged as two flats, planning permission has been applied for and is due imminently to restore it to a single dwelling. Nearest transport is provided at West Norwood station with its frequent services to London Bridge and Victoria. The amenities along Knights Hill are also close to hand.



Winkworth

for every step...



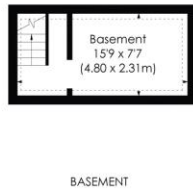
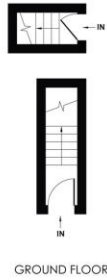
Winkworth

for every step...



ST JULIAN'S FARM ROAD, SE27

Approx. Gross Internal Floor Area
3126 Sq. ft/290.41 Sq. m
 (Including Basement & Eaves)

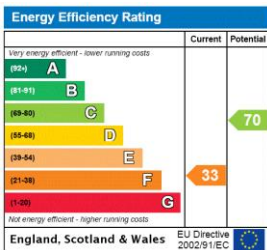


© Pixangle Property Marketing Ltd. info@pixangle.com Tel: 0208 870 2118



This floor plan has been prepared for the purpose of illustration only in accordance with the latest RICS code of measuring practice and is not to scale. All measurements and areas are approximate and whilst every effort has been made to ensure the accuracy of the plan contained here, no responsibility is taken for any error, omission or misstatement.

This floorplan is for illustration purposes only and is not to scale. The position and size of doors, windows, appliances and other features are approximate.



West Norwood | 02086700035 | westnorwood@winkworth.co.uk



for every step...

winkworth.co.uk

Winkworth wishes to inform prospective buyers and tenants that these particulars are a guide and act as information only. All our details are given in good faith and believed to be correct at the time of printing but they don't form part of an offer or contract. No Winkworth employee has authority to make or give any representation or warranty in relation to this property. All fixtures and fittings, whether fitted or not are deemed removable by the vendor unless stated otherwise and room sizes are measured between internal wall surfaces, including furnishings.