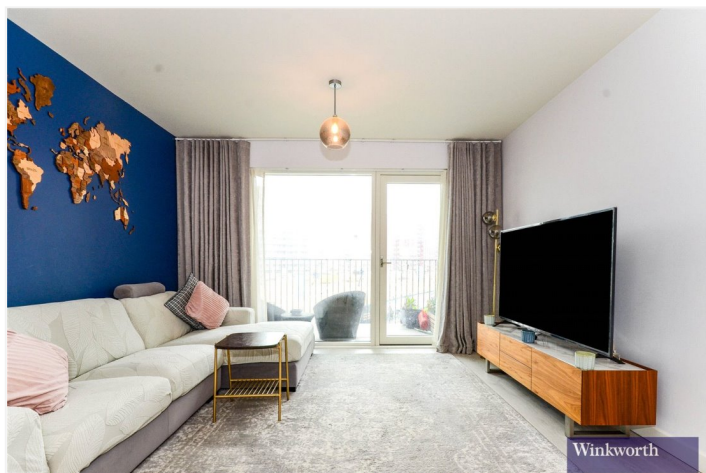




Winkworth



Winkworth



Winkworth

HARGRAVE DRIVE, MIDDLESEX, HA1 £400,000 LEASEHOLD

Tenure: Leasehold
Term: 993 year and 9 months
Service Charge: £2,889.06 per annum
Ground Rent: £400 Annually (subject to increase)
Council Tax Band: D
EPC Rating: B

Harrow | 020 8861 3933 | harrow@winkworth.co.uk

Winkworth

for every step...

winkworth.co.uk



DESCRIPTION:

Welcome to the epitome of luxury living - a sensational two-bedroom apartment located on the second floor, right in the heart of Harrow! This is urban living at its very finest, with everything you need to live your best life right at your fingertips.

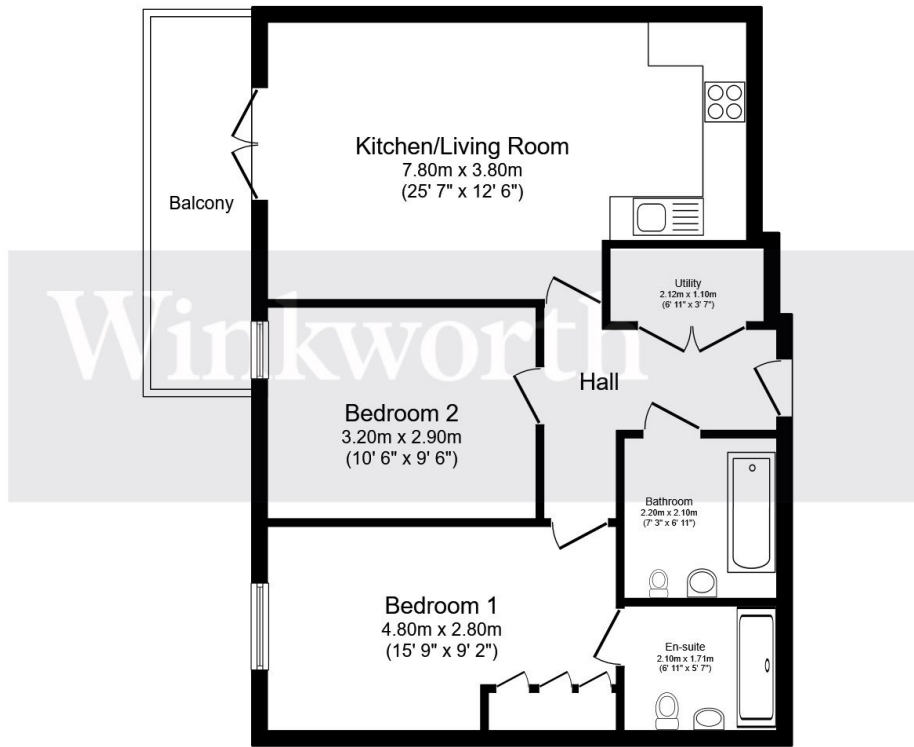
Inside, you'll find an open-plan living area that is simply perfect for entertaining guests. The fully fitted kitchen with integrated appliances is a chef's dream come true, while the living area leads out onto a private balcony area that floods the space with natural light, making it feel bright, airy, and spacious all day long.

Both of the generously sized bedrooms offer plenty of space and comfort, with the main bedroom featuring an en-suite bathroom that is sure to impress even the most discerning buyer.

But that's not all - You'll have access to on-site amenities such as a concierge, gym, Sainsbury's Local, cafés and over 6 acres of green space, as well as great accessibility to Euston from nearby Harrow & Wealdstone station.







Total floor area 66.3 m² (714 sq.ft.) approx

This floor plan is for illustrative purposes only. It is not drawn to scale. Any measurements, floor areas (including any total floor area), openings and orientation are approximate. No details are guaranteed, they cannot be relied upon for any purpose and they do not form part of any agreement. No liability is taken for any error, omission or misstatement. A party must rely upon its own inspection(s). Powered by www.focalagent.com

This floorplan is for illustration purposes only and is not to scale. The position and size of doors, windows, appliances and other features are approximate.

Harrow | 020 8861 3933 | harrow@winkworth.co.uk

Winkworth

for every step...

winkworth.co.uk

Winkworth wishes to inform prospective buyers and tenants that these particulars are a guide and act as information only. All our details are given in good faith and believed to be correct at the time of printing but they don't form part of an offer or contract. No Winkworth employee has authority to make or give any representation or warranty in relation to this property. All fixtures and fittings, whether fitted or not are deemed removable by the vendor unless stated otherwise and room sizes are measured between internal wall surfaces, including furnishings.