



LEIGH HILL, LEIGH-ON-SEA, SS9
£2,500 PER MONTH UNFURNISHED

TWO BEDROOM COTTAGE WITH PARKING AND VIEWS OF THE ESTUARY AND OLD TOWN

Leigh On Sea | 01702 470625 | leighonsea@winkworth.co.uk

Tenant Fees Apply: Details of fees for tenant referencing, tenancy agreement admin fees and renewal fees are available on the Winkworth website and the link can be found with the displayed rent for the property. Tenants should ensure they are fully conversant with these upfront fees and other costs that are involved at the outset of the tenancy before making an offer to rent and your local Winkworth office will provide written details upon request.

winkworth.co.uk

Winkworth

for every step...



DESCRIPTION:

Winkworth are delighted to offer for rent this truly stunning two bedroom refurbished terraced coastal cottage located in one of the most sought after locations in Leigh on Sea. Situated in an elevated position overlooking the Old Town & Thames Estuary with what must be one of the best views available that we have seen!

The accommodation comprises of a luxury fitted kitchen that comprises of integrated oven and hob, dishwasher, washing machine and fridge freezer and granite worktops.

There is a large lounge / diner leading to a sunroom with stunning Estuary Views. The ground floor accommodation is fitted new carpets and there is a downstairs cloakroom.

The first floor accommodation comprises of two double bedrooms with new fitted carpets, the master with Estuary Views and a luxury family bathroom suite.

Externally there is a large terraced area and garden that are south facing and offer stunning views of the Estuary and the Old Town

Room Dimensions

Kitchen 5.6m x 3m

Lounge Diner 7.4m x 4.8m

Sunroom 4.8m x 3.5m

Master Bedroom 4.8m x 3.7m

Bedroom Two 3.6m x 3.2m

Winkworth

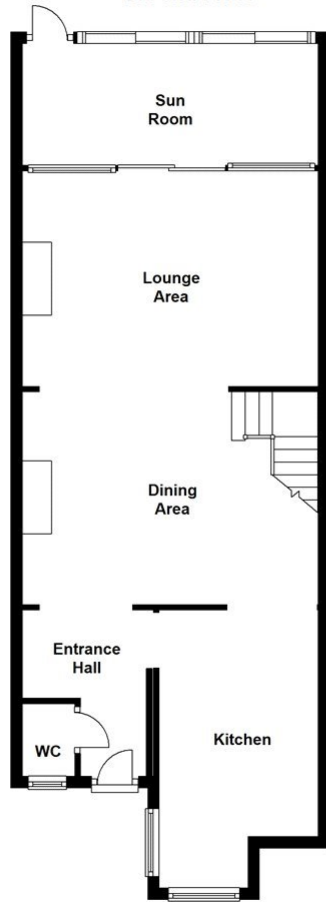
for every step...



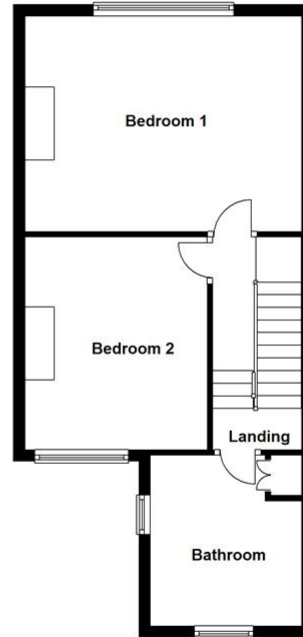
Winkworth

for every step...

Ground Floor

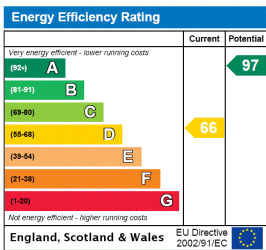


First Floor



Not to be used for architectural or planning purposes. Illustrative purposes only
Plan produced using PlanUp.

This floorplan is for illustration purposes only and is not to scale. The position and size of doors, windows, appliances and other features are approximate.



Leigh On Sea | 01702 470625 | leighonsea@winkworth.co.uk

for every step...

winkworth.co.uk

Winkworth wishes to inform prospective buyers and tenants that these particulars are a guide and act as information only. All our details are given in good faith and believed to be correct at the time of printing but they don't form part of an offer or contract. No Winkworth employee has authority to make or give any representation or warranty in relation to this property. All fixtures and fittings, whether fitted or not are deemed removable by the vendor unless stated otherwise and room sizes are measured between internal wall surfaces, including furnishings.