



FRYENT WAY, KINGSBURY, LONDON, NW9
£675,000 FREEHOLD

BEAUTIFUL FOUR BEDROOM SEMI DETACHED HOME IN FRYENT WAY

Kingsbury | 020 8204 0000 | kingsbury@winkworth.co.uk



for every step...

winkworth.co.uk



A charming semi-detached family home nestled in the ever-loved locale of Fryent Way, Kingsbury. Meticulously maintained and exuding warmth, this property offers an abundance of living space perfect for a family in search of their forever home. Upon entering, you are greeted by a spacious entrance hall leading to a through lounge providing ample space for relaxation and entertainment. The simplistic yet functional kitchen is designed to cater to your culinary needs, while a convenient shower room adds to the practicality of the ground floor as does a generously sized bedroom and a sunroom / conservatory offering tranquil retreats with panoramic views of the lush garden, providing a seamless blend of indoor-outdoor living. Ascending to the upper floor, you'll discover three well-proportioned bedrooms, each promising comfort and privacy, along with a family bathroom. Externally, the property boasts a beautifully laid-to-lawn garden, providing a serene oasis for outdoor gatherings. Off-street parking to the front ensures convenience and ease of access. The property is situated moments away from picturesque Fryent Country Park and the vibrant heart of Kingsbury, with thriving Wembley not far away either. This location offers the perfect balance of natural beauty and urban amenities, whilst sitting in the catchment area for acclaimed local schools. Don't miss out on the chance to make this your own haven of comfort and tranquillity. An internal viewing is a must.



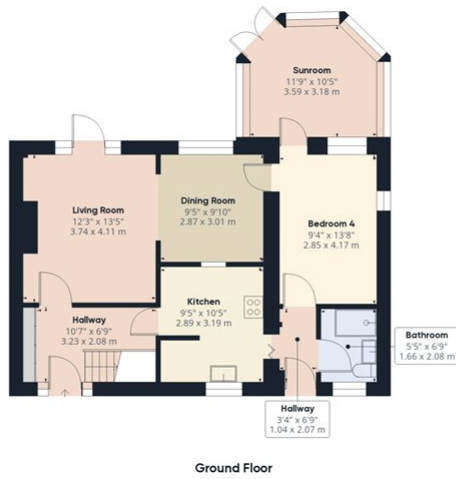
Winkworth

for every step...



Winkworth

for every step...



Approximate total area⁽¹⁾
 1194.7 ft²
 110.99 m²

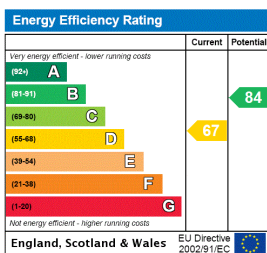


(1) Excluding balconies and terraces

While every attempt has been made to ensure accuracy, all measurements are approximate, not to scale. This floor plan is for illustrative purposes only.

GIRAFFE360

This floorplan is for illustration purposes only and is not to scale. The position and size of doors, windows, appliances and other features are approximate.



Tenure: Freehold

Council Tax Band: D

Where no figures are shown, we have been unable to ascertain the information. All figures that are shown were correct at the time of printing.

Kingsbury | 020 8204 0000 | kingsbury@winkworth.co.uk



for every step...

winkworth.co.uk

Winkworth wishes to inform prospective buyers and tenants that these particulars are a guide and act as information only. All our details are given in good faith and believed to be correct at the time of printing but they don't form part of an offer or contract. No Winkworth employee has authority to make or give any representation or warranty in relation to this property. All fixtures and fittings, whether fitted or not are deemed removable by the vendor unless stated otherwise and room sizes are measured between internal wall surfaces, including furnishings.