



WIGHTMAN ROAD, N8
£425,000 SHARE OF FREEHOLD

DESCRIPTION:

Atractive two-bedroom first floor, split level conversion has access to a section of west-facing garden.
 chain-free

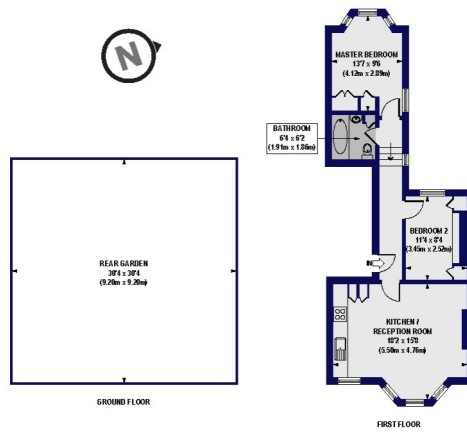
Harringay | 020 8800 5151 | harringay@winkworth.co.uk

Winkworth

for every step...

winkworth.co.uk

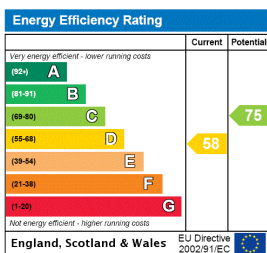
Wightman Road, N8
Approx. Gross Internal Floor Area 577 sq. ft / 53.65 sq. m



All measurements of walls, doors, windows, fittings and appliances, including gas and electricity, are given in the floor plan and do not constitute any warranty or representation by the seller, their agent or Winkworth. Any intended purchaser must satisfy himself by inspection or otherwise as to the correctness of the information contained in these plans. These plans are for illustration purposes only and should be verified shortly before any prospective purchases.

Winkworth

This floorplan is for illustration purposes only and is not to scale. The position and size of doors, windows, appliances and other features are approximate.



Harringay | 020 8800 5151 | harringay@winkworth.co.uk

Winkworth

for every step...

winkworth.co.uk

winkworth wishes to inform prospective buyers and tenants that these particulars are a guide and act as information only. All our details are given in good faith and believed to be correct at the time of printing but they don't form part of an offer or contract. No winkworth employee has authority to make or give any representation or warranty in relation to this property. All fixtures and fittings, whether fitted or not are deemed removable by the vendor unless stated otherwise and room sizes are measured between internal wall surfaces, including furnishings.