



LOUISVILLE ROAD, LONDON, SW17
£400,000 LEASEHOLD

A BEAUTIFULLY PRESENTED ONE BEDROOM SPLIT LEVEL FLAT

A beautifully presented one bedroom split level flat, close to local amenities and transport links. This beautiful flat would be ideal for first time buyers or an investment property. Set in a gorgeous Victorian conversion, the flat briefly comprises; open plan kitchen/living room with integral appliances including a dishwasher, spacious double bedroom, and a generous size bathroom. The fact that it is placed on the top floor of a period building, means the flat boasts plenty of natural light throughout.

Louisville Road is a popular residential road running between Balham High Road and Elmbourne Road in Tooting's ever popular Heaver Estate. Tooting Bec underground station (Northern Line) is just moments away as are the vast array of shops, bars and restaurants local to the area.

Property information:

Tooting | 020 8767 5221
17 Upper Tooting Road, London, SW17 7TS

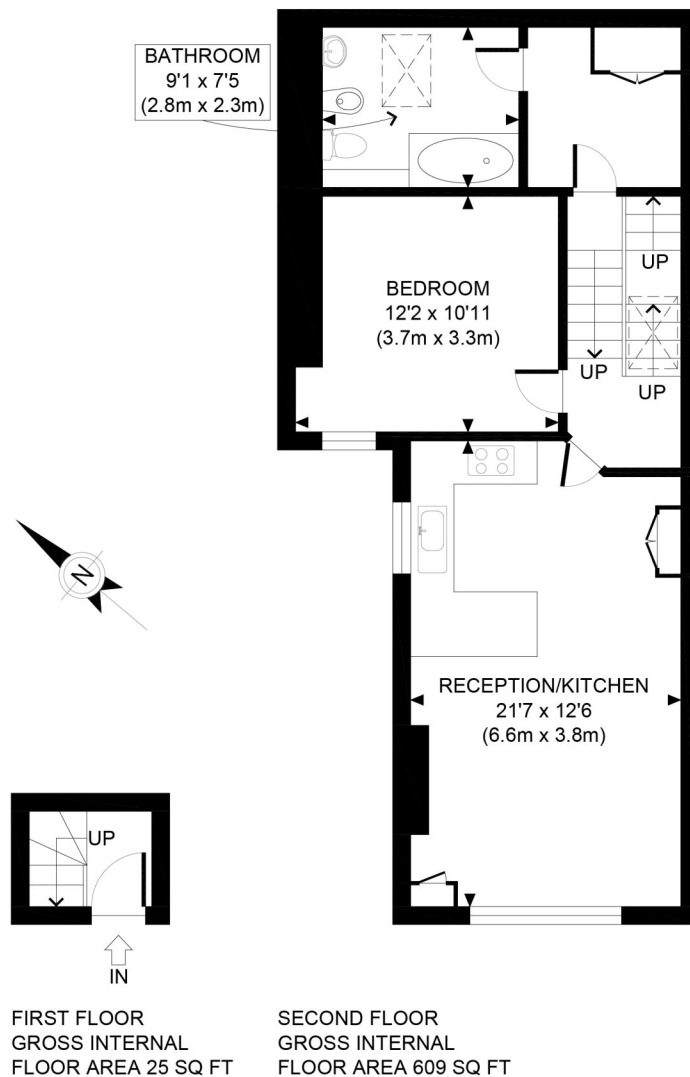
Winkworth

for every step...

[winkworth.co.uk](https://www.winkworth.co.uk)

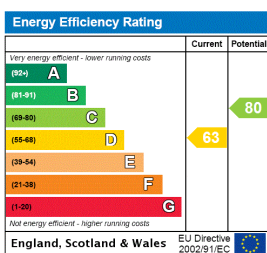






APPROX. GROSS INTERNAL FLOOR AREA 634 SQ FT / 59 SQM		louisville rd	
Disclaimer: Floor plan measurements are approximate and are for illustrative purposes only. While we do not doubt the floor plan accuracy and completeness, you or your advisors should conduct a careful, independent investigation of the property in respect of monetary valuation		date	31/07/21
		photoplan	

This floorplan is for illustration purposes only and is not to scale. The position and size of doors, windows, appliances and other features are approximate.



Tooting | 020 8767 5221 | tooting@winkworth.co.uk
17 Upper Tooting Road, London, SW17 7TS

Winkworth
for every step...

winkworth.co.uk

Winkworth wishes to inform prospective buyers and tenants that these particulars are a guide and act as information only. All our details are given in good faith and believed to be correct at the time of printing but they don't form part of an offer or contract. No Winkworth employee has authority to make or give any representation or warranty in relation to this property. All fixtures and fittings, whether fitted or not are deemed removable by the vendor unless stated otherwise and room sizes are measured between internal wall surfaces, including furnishings.