



BIRKBECK MEWS, LONDON, E8
£3,250 PER MONTH FURNISHED, UNFURNISHED

**MODERN THREE BEDROOM APARTMENT IN A VIBRANT LOCATION, WITH
EXCELLENT TRANSPORT LINKS, OPENPLAN LIVING, SEPARATE KITCHEN,
CONTEMPORARY BATHROOM, AND DEDICATED OFFICE SPACE.**

Hackney | 020 8986 4216 | hackney@winkworth.co.uk

Tenant Fees Apply: Details of fees for tenant referencing, tenancy agreement admin fees and renewal fees are available on the Winkworth website and the link can be found with the displayed rent for the property. Tenants should ensure they are fully conversant with these upfront fees and other costs that are involved at the outset of the tenancy before making an offer to rent and your local Winkworth office will provide written details upon request.

[winkworth.co.uk](https://www.winkworth.co.uk)

Winkworth

See things differently



DESCRIPTION:

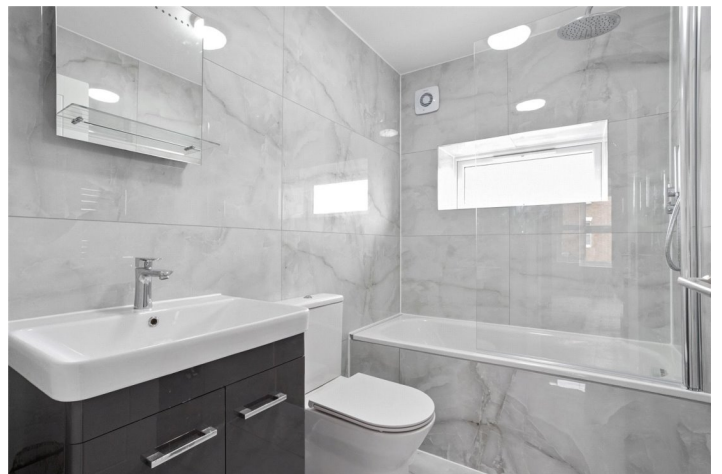
Situated in a vibrant and wellconnected area of London, this spacious apartment offers modern, practical living ideally suited to professionals and couples. Wifi is included in the rent.

A dedicated office room, located on the same floor and available exclusively to tenants, provides an excellent space for home working, ensuring privacy and convenience separate from the main living area.

The apartment features a bright openplan living and dining area complemented by a fully fitted contemporary kitchen with integrated appliances. Three generously proportioned bedrooms are served by a stylish family bathroom, designed with modern finishes.

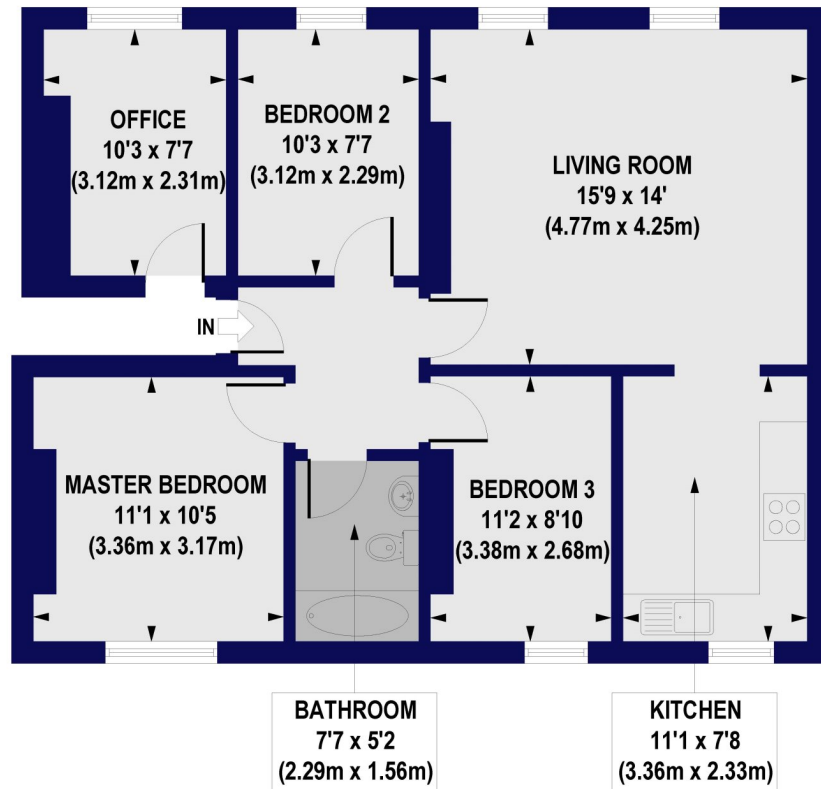
Additional benefits include broadband connectivity included within the rental and CCTV monitoring for added peace of mind.

Winkworth



Winkworth

Birkbeck Mews, E8
Approx. Gross Internal Floor Area 778 sq. ft / 72.30 sq. m



SECOND FLOOR

All measurements of walls, doors, windows, fittings and appliances, including their size and location, are shown as standard sizes and do not constitute any warranty or representation by the seller, their agent or CP Creative. Any intending purchaser must satisfy himself by inspection or otherwise as to the correctness of the information contained in these plans. This plan is for illustrative purposes only and should be used as such by any prospective purchasers.

Winkworth

This floorplan is for illustration purposes only and is not to scale. The position and size of doors, windows, appliances and other features are approximate.

Hackney | 020 8986 4216 | hackney@winkworth.co.uk

Winkworth

winkworth.co.uk

See things differently

Winkworth wishes to inform prospective buyers and tenants that these particulars are a guide and act as information only. All our details are given in good faith and believed to be correct at the time of printing but they don't form part of an offer or contract. No Winkworth employee has authority to make or give any representation or warranty in relation to this property. All fixtures and fittings, whether fitted or not are deemed removable by the vendor unless stated otherwise and room sizes are measured between internal wall surfaces, including furnishings.