



STAR STREET, PADDINGTON, W2
GUIDE PRICE £525,000 LEASEHOLD

**A STUNNING ONE BEDROOM GROUND FLOOR APARTMENT, WITH A
GENEROUS CEILING HEIGHT, LONG LEASE, SET WITHIN A HANDSOME,
BROWN BRICK, STUCCO, LATE GEORGIAN GRADE II BUILDING.**

**LEASE: ABOUT 164 YEARS REMAINING | SERVICE CHARGE - ABOUT £2,900
PER ANNUM | GROUND RENT - ABOUT £200 PER ANNUM | COUNCIL TAX
BAND: D**

Paddington | 020 7467 5770 | paddington@winkworth.co.uk

Winkworth

for every step...

winkworth.co.uk



DESCRIPTION:

Located less than half a mile north of Hyde Park; Star Street is a sought after residential street nestled within one of the best-connected areas of central London. Nearby transport links include underground services from Brunel's Grade I listed Paddington station (Circle, District, Bakerloo and Hammersmith and City - National Rail Services and Heathrow Express). The Elizabeth Line connects London east to west, with a major new hub at Paddington. Other stations include Edgware Road, Marble Arch (Central Line) and Marylebone.



Winkworth

for every step...

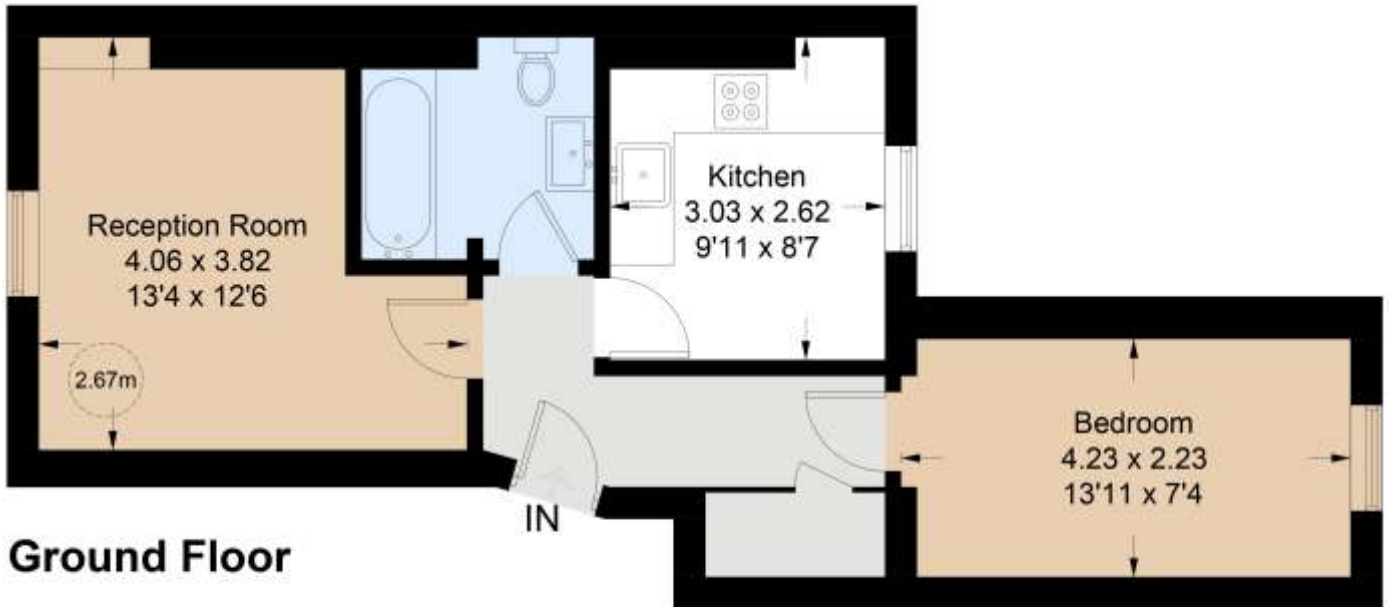


Winkworth

for every step...

Star Street

Approximate Gross Internal Area = 43.8 sq m / 471 sq ft



Ground Floor

Illustration for identification purposes only, measurements are approximate, not to scale. floorplansUsketch.com © (ID1038320)

This floorplan is for illustration purposes only and is not to scale. The position and size of doors, windows, appliances and other features are approximate.

Paddington | 020 7467 5770 | paddington@winkworth.co.uk

Winkworth

for every step...

winkworth.co.uk

Winkworth wishes to inform prospective buyers and tenants that these particulars are a guide and act as information only. All our details are given in good faith and believed to be correct at the time of printing but they don't form part of an offer or contract. No Winkworth employee has authority to make or give any representation or warranty in relation to this property. All fixtures and fittings, whether fitted or not are deemed removable by the vendor unless stated otherwise and room sizes are measured between internal wall surfaces, including furnishings.