



42 GATESBY COURT, HATCHAM STREET, LONDON, SE26
£475,000 LEASEHOLD

Forest Hill | | foresthill@winkworth.co.uk



DESCRIPTION:

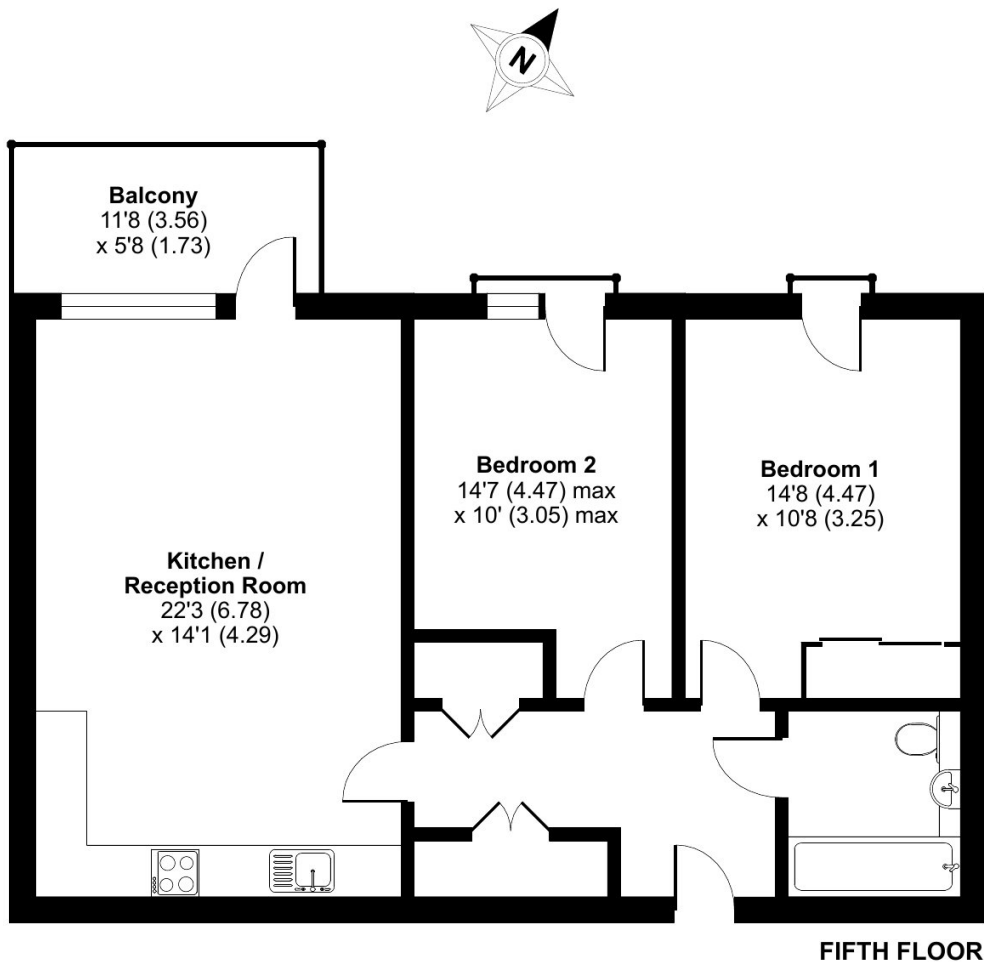
We are pleased to offer a beautifully presented 2-bedroom apartment nestled in the heart of Hatcham Street, SE26. This bright and spacious home offers a perfect blend of modern comfort and convenience, making it ideal for first-time buyers, professionals, or investors alike.





Hatcham Street, London, SE26

Approximate Area = 800 sq ft / 74.3 sq m
For identification only - Not to scale



Floor plan produced in accordance with RICS Property Measurement Standards incorporating International Property Measurement Standards (IPMS2 Residential). © nichecom 2024.
Produced for Winkworth Forest Hill and New Cross. REF: 1181266

This floorplan is for illustration purposes only and is not to scale. The position and size of doors, windows, appliances and other features are approximate.

Tenure: Leasehold

