



GREAT PULTENEY STREET, BATH, BA2
£400,000 LEASEHOLD

Winkworth



GREAT PULTENEY STREET, BATH, BA2

Grade I listed Georgian apartment | communal gardens | on street residents parking | luxury specification | Prime location.

Fitzroy House is a prestigious development of 27 apartment across 6 townhouses on the iconic Great Pulteney Street. The property is an exquisite one bedroom apartment with a great sense of space and light. It benefits from it's own private courtyard space and access, but also has the flexibility to enter via the impressive entrance hall at street level and use of the lift.

Entrance hall | sitting room | Bulthaup kitchen | ensuite shower room.

Private courtyard | vaults | communal garden

On street residence parking (zone 1)

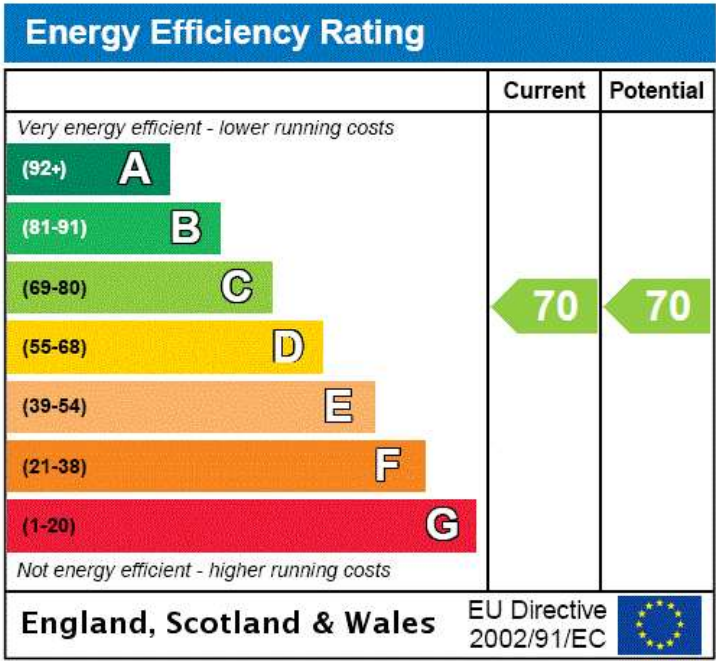
Small pets allowed | No holiday letting

Once inside the apartment, to the right is the double bedroom and ensuite with beautiful tall sash windows overlooking the courtyard. There is a separate stylish Bulthaup kitchen leading on to the main living/reception room.

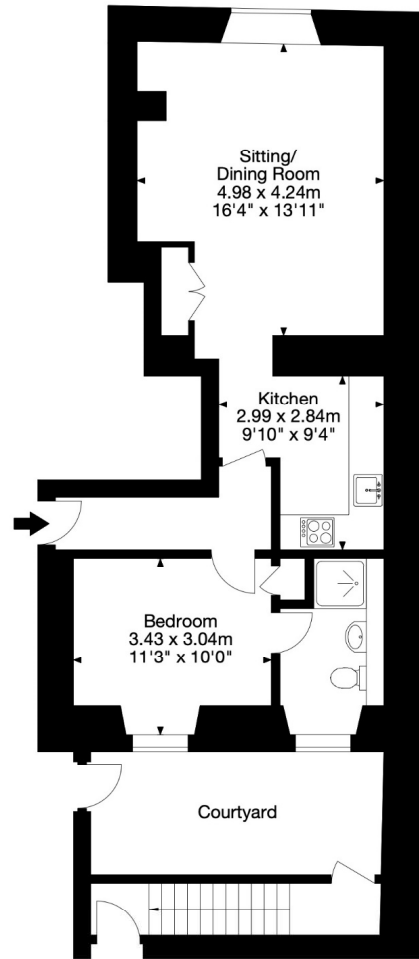
250 meters Pulteney Bridge | 300 meters Waitrose | 1250 meters Bath Spa Station



Tenure: 999 years
Service Charge: TBC
Ground Rent: TBC
Council Tax: TBC
Post code: BA2 4DW



59b Great Pulteney Street, Bath BA2 4DW
Gross Internal Area (Approx.)
50 sq m / 538 sq ft
(Excl. Courtyard)



Courtyard Floor

Capture Property Marketing 2023. Drawn to RICS guidelines. Not drawn to scale.
Plans for illustration purposes only. All features, floor coverings, and window locations are approximate.
All measurements and areas are approximate and should not be relied on as a statement of fact. **Capture.**

Bath | 01225 829 000 | bath@winkworth.co.uk

[winkworth.co.uk](https://www.winkworth.co.uk)

Winkworth wishes to inform prospective buyers and tenants that these particulars are a guide and act as information only. All our details are given in good faith and believed to be correct at the time of printing but they don't form part of an offer or contract. No Winkworth employee has authority to make or give any representation or warranty in relation to this property. All fixtures and fittings, whether fitted or not are deemed removable by the vendor unless stated otherwise and room sizes are measured between internal wall surfaces, including furnishings.

Winkworth