

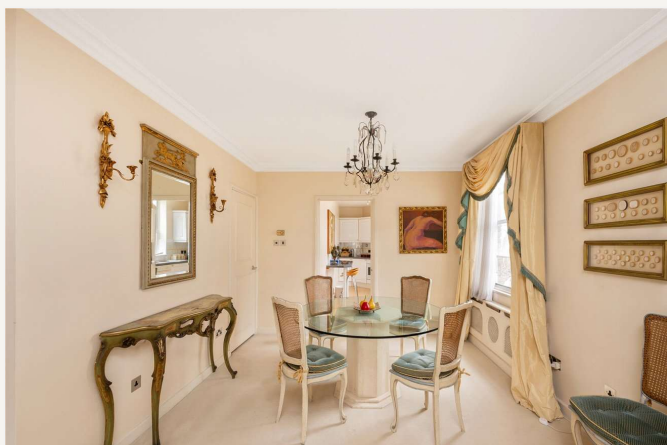


Manor House Court, Maida Vale, London, W9

£900,000 *Leasehold*

3  1  2 

A large (approx. 1200 sq. ft.) second floor apartment forming part of this small boutique modern purpose built block with underground parking, lift and portage located in the heart of Little Venice. The apartment offers well-proportioned accommodation with a large principal bedroom suite, two further double bedrooms, second bathroom, a large entertaining area and a separate kitchen. Manor House Court is a sought after block located close to all the amenities offered by this fashionable area including the shops, cafes on Clifton Road (Approx. 0.3 Miles), the famous Regents Canal and the Underground at Warwick Avenue (Bakerloo Line).



Winkworth Maida Vale

020 7289 1692 | maidavale@winkworth.co.uk

Winkworth

for every step...



KEY FEATURES

- Three Bedrooms
- One Reception Room
- Two Bathrooms
- Porter
- Kitchen
- Underground Parking
- Lift Access
- Leasehold



MATERIAL INFO

Tenure: Leasehold

Lease Expiry Date: 27/01/2094

Service Charge: £5,645 per annum

Ground Rent: £959.68 Annually (subject to increase)

Council Tax Band: G

EPC rating: D





Score	Energy rating	Current	Potential
92+	A		
81-91	B		81 B
69-80	C		
55-68	D	57 D	
39-54	E		
21-38	F		
1-20	G		

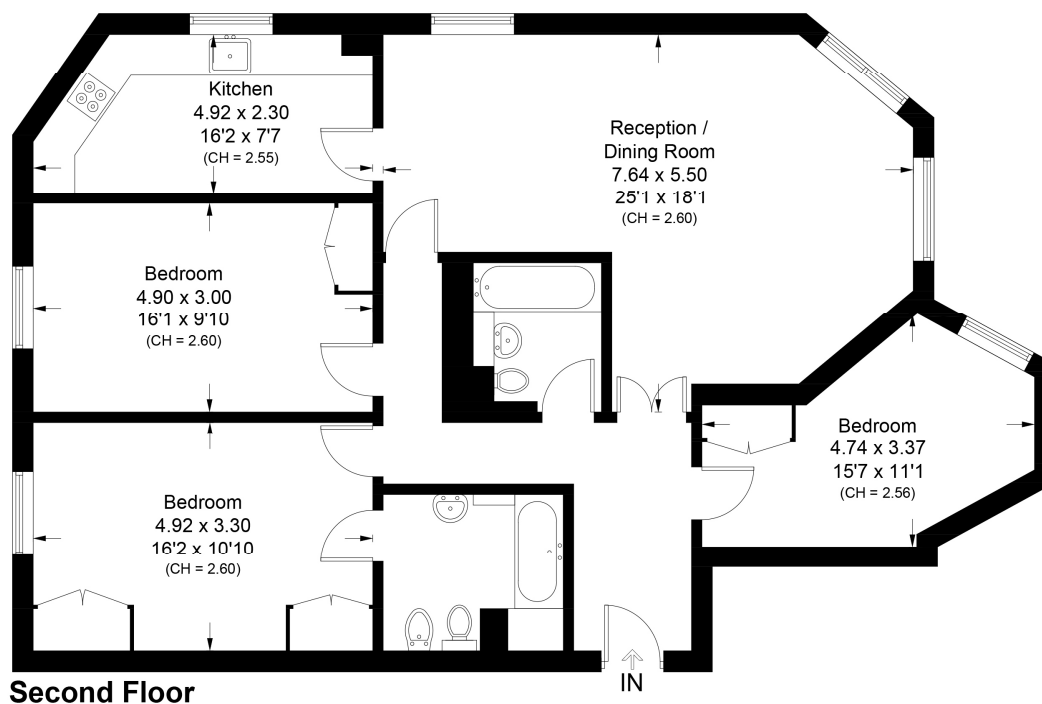
For more information, scan the QR code or visit the link below



<https://www.winkworth.co.uk/sale/property/SJD170431>

Manor House Court, Warrington Gardens, W9

Approximate Area = 111.5 sq m / 1200 sq ft
Including Limited Use Area (1.0 sq m / 11 sq ft)



Surveyed and drawn in accordance with the International property measurements standards (IPMS 2: Residential) Not drawn to scale unless stated.
Whilst every care is taken in the preparation of this plan, please check all dimensions, shapes and compass bearings before making any decisions reliant upon them.

Where no figures are shown, we have been unable to ascertain the information. All figures that are shown were correct at the time of printing.

Winkworth Maida Vale

020 7289 1692 | maidavale@winkworth.co.uk

Winkworth

for every step...

Winkworth wishes to inform prospective buyers and tenants that these particulars are a guide and act as information only. All our details are given in good faith and believed to be correct at the time of printing but they don't form part of an offer or contract. No Winkworth employee has authority to make or give any representation or warranty in relation to this property. All fixtures and fittings, whether fitted or not are deemed removable by the vendor unless stated otherwise and room sizes are measured between internal wall surfaces, including furnishings.