



Cardinal Avenue, Hertfordshire, WD6

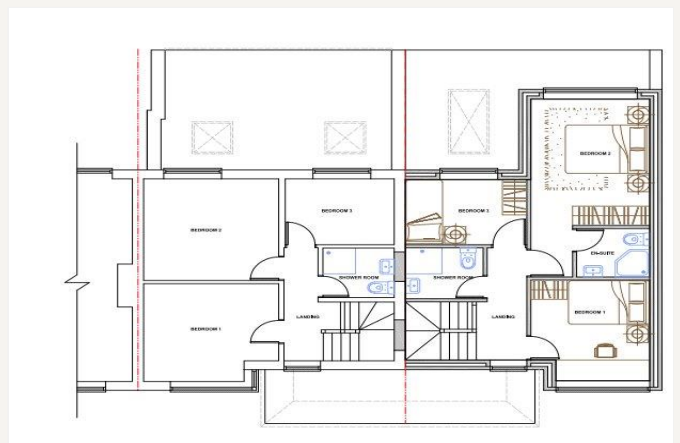
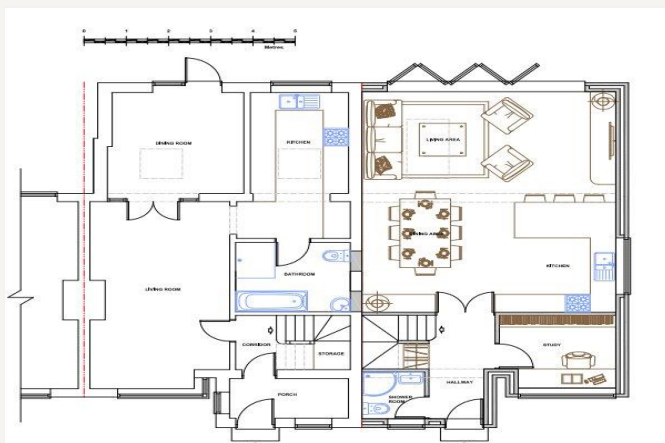
Guide Price £850,000 *Freehold*

Development Opportunity in South
Borehamwood.



KEY FEATURES

- 3 Bedrooms
- South Borehamwood
- Existing House, 1059 Square Feet
- Southerly Facing Garden
- Convenient and Sought After Location
- Planning Permission Granted Ref: 25/0324/Ful



Borehamwood

020 8953 8899 | borehamwood@winkworth.co.uk



With planning permission already granted to build a three-bedroom, two bathroom house to the side of the existing three-bedroom semi-detached family house this purchase represents almost unique opportunity for either a developer or end user.

Located on the South side of Borehamwood the corner site is within walking distance of Borehamwood High Street and Thameslink Station and close to "Good" and "Outstanding" Ofsted rated schools including Monksmead and Yavneh

Full planning details are available by either visiting the planning section of the Hertsmere council web site or upon request from ourselves, planning ref: 25/0324/FUL

MATERIAL INFO

Tenure: Freehold

Term: N/A

Service Charge: N/A

Ground Rent: N/A

Council Tax Band: E

EPC rating: D



Approximate Gross Internal Area = 98.4 sq m / 1059 sq ft
Garage = 12.9 sq m / 139 sq ft
Total = 111.3 sq m / 1198 sq ft

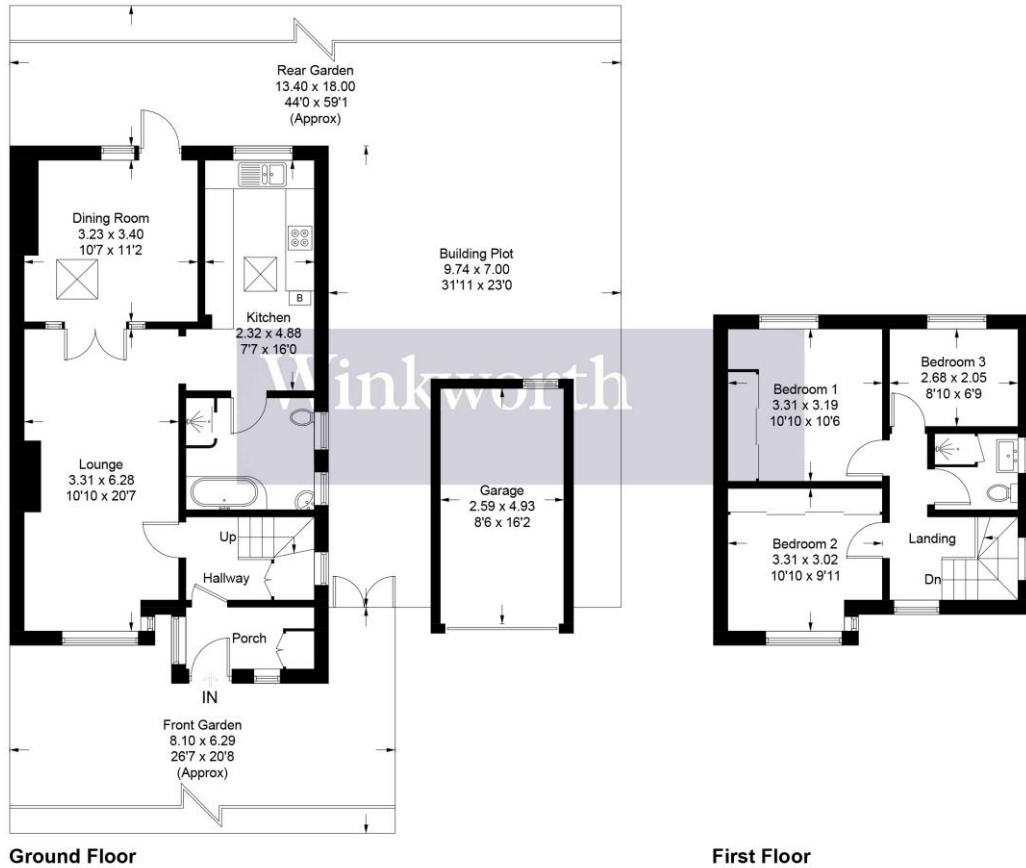


Illustration for identification purposes only, measurements are approximate, not to scale. Winkworth © 2025 (ID1240709)

For more information, scan the QR code or visit the link below

Score	Energy rating	Current	Potential
92+	A		
81-91	B		
69-80	C		
55-68	D	68 D	79 C
39-54	E		
21-38	F		
1-20	G		

<https://www.winkworth.co.uk/sale/property/BOR240375>

Where no figures are shown, we have been unable to ascertain the information. All figures that are shown were correct at the time of printing.

Borehamwood

020 8953 8899 | borehamwood@winkworth.co.uk

Winkworth wishes to inform prospective buyers and tenants that these particulars are a guide and act as information only. All our details are given in good faith and believed to be correct at the time of printing but they don't form part of an offer or contract. No Winkworth employee has authority to make or give any representation or warranty in relation to this property. All fixtures and fittings, whether fitted or not are deemed removable by the vendor unless stated otherwise and room sizes are measured between internal wall surfaces, including furnishings.