



Bathurst Gardens, NW10

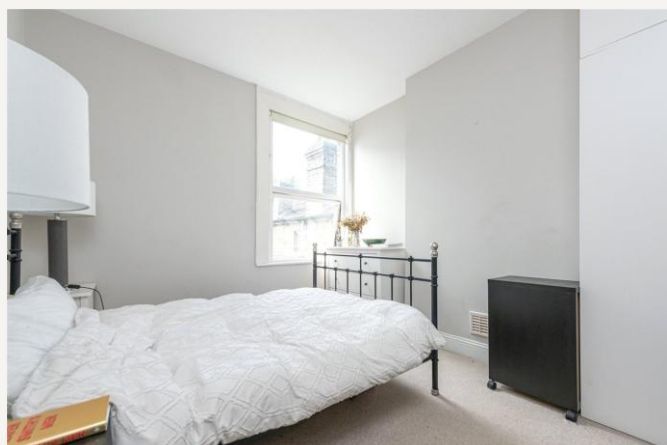
£2,300 per month *Furnished*



Stunning two double bedroom first floor conversion located on a gorgeous residential road. Two spacious double bedrooms and walking distance from transport links.

KEY FEATURES

- Available 07/03/26
- Two Double Bedrooms
- Modern Kitchen
- First Floor
- Fully Tiled Bathroom
- Bright Reception Room



Kensal Rise & Queens Park

0208 960 4947 | kensalrise@winkworth.co.uk

Winkworth

for every step...



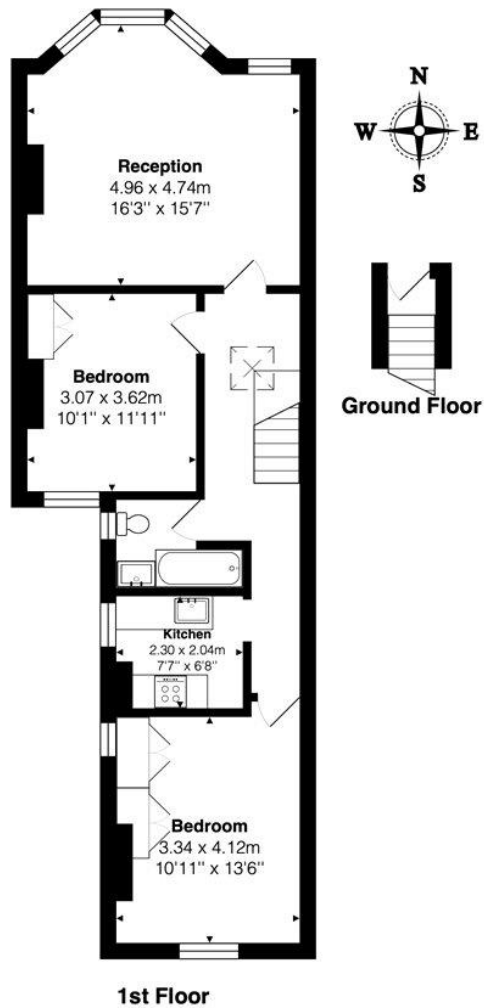


MATERIAL INFO

Deposit: 5 weeks rent

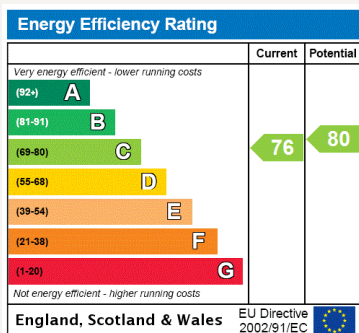
Holding Deposit: 1 weeks rent

Council Tax Band: C

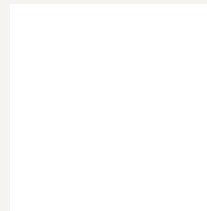


Total Area: 68.6 m² ... 739 ft²

All measurements are approximate and for display purposes only



For more information, scan the QR code or visit the link below



<https://www.winkworth.co.uk/rent/property/WIG140284>

Where no figures are shown, we have been unable to ascertain the information. All figures that are shown were correct at the time of printing.

Kensal Rise & Queens Park

0208 960 4947 | kensalrise@winkworth.co.uk

Winkworth

for every step...

Winkworth wishes to inform prospective buyers and tenants that these particulars are a guide and act as information only. All our details are given in good faith and believed to be correct at the time of printing but they don't form part of an offer or contract. No Winkworth employee has authority to make or give any representation or warranty in relation to this property. All fixtures and fittings, whether fitted or not are deemed removable by the vendor unless stated otherwise and room sizes are measured between internal wall surfaces, including furnishings.