

**FLAT 18, GWYNNE HOUSE, TURNER STREET, LONDON, E1**  
**£1,500 PER MONTH FURNISHED**

## **IMPECCABLE ONE BEDROOM APARTMENT IN STYLISH ART-DECO BLOCK CLOSE TO WHITECHAPEL TUBE AND FINISHED TO A**

**Shoreditch** | 020 7749 7650 | [shoreditch@winkworth.co.uk](mailto:shoreditch@winkworth.co.uk)

Tenant Fees Apply: Details of fees for tenant referencing, tenancy agreement admin fees and renewal fees are available on the Winkworth website and the link can be found with the displayed rent for the property. Tenants should ensure they are fully conversant with these upfront fees and other costs that are involved at the outset of the tenancy before making an offer to rent and your local Winkworth office will provide written details upon request.



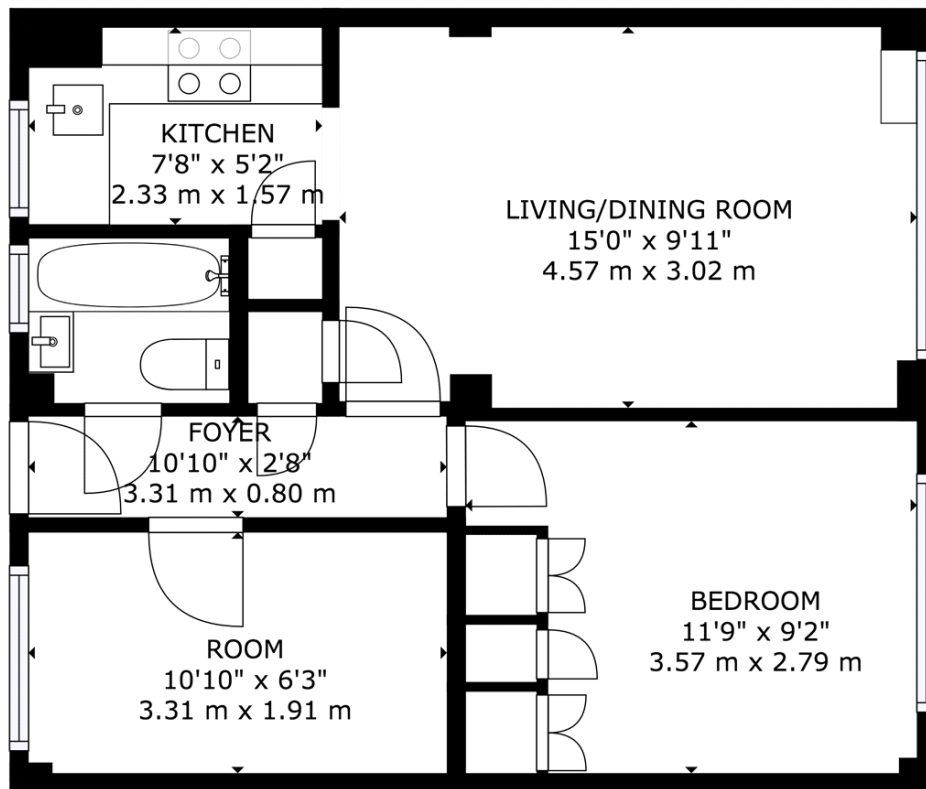
## DESCRIPTION:

A stylish contemporary apartment situated in a popular art-deco style block Gwynne House. This immaculate property has a spacious reception room with stunning views of the city, leading onto a modern open-plan fitted kitchen and being on one of the higher floors - this apartment benefits from an abundance of natural light. The property also has a spacious double bedroom with storage, modern bathroom suite, single bedroom/study and has high finish wooden flooring throughout.

Gwynne House is set in an excellent position just 300m from Whitechapel Tube station and only a short walk from Aldgate and the City.







FLOOR 1

GROSS INTERNAL AREA  
FLOOR 1: 448 sq ft, 42 m<sup>2</sup>  
TOTAL: 448 sq ft, 42 m<sup>2</sup>  
SIZES AND DIMENSIONS ARE APPROXIMATE, ACTUAL MAY VARY.

POWERED BY  
**matterport**

This floorplan is for illustration purposes only and is not to scale. The position and size of doors, windows, appliances and other features are approximate.