

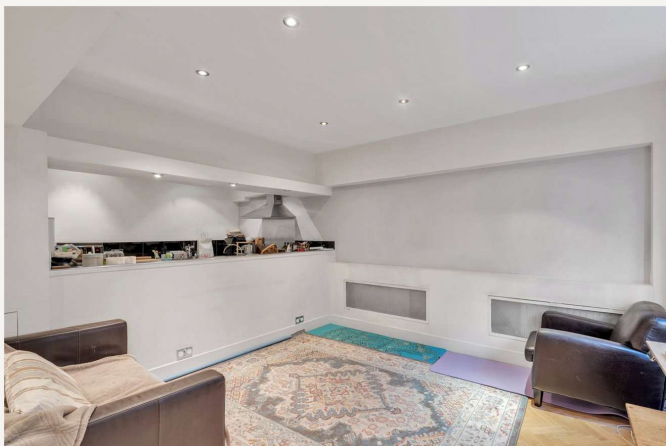


Grove End Gardens, St John's Wood, London, NW8

£675,000 *Leasehold*



We are delighted to offer for sale this spacious one bedroom apartment (675sq ft) with its own private entrance which leads directly on to a secure, gated communal garden. The property boasts a 22ft x 21ft reception/kitchen area, which could also be used as a dining or office space. This highly sought-after development is less than half a mile away from St John's Wood High Street, Underground Station (Jubilee Line) and Lord's Cricket Ground, with Regent's Park less than one mile away.



St John's Wood

020 7586 7001 | stjohnswood@winkworth.co.uk



KEY FEATURES

- Bedroom
- Shower Room
- Open Plan Kitchen/Reception Room
- Private Entrance
- Direct Access to Communal Gardens
- Concierge
- Leasehold



MATERIAL INFO

Tenure: Leasehold

Lease Expiry Date: 29/09/2147 00:00:00

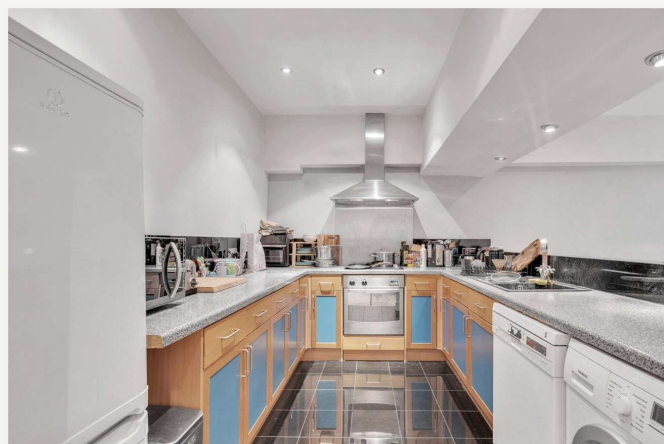
Service Charge: £8,842.88 per annum

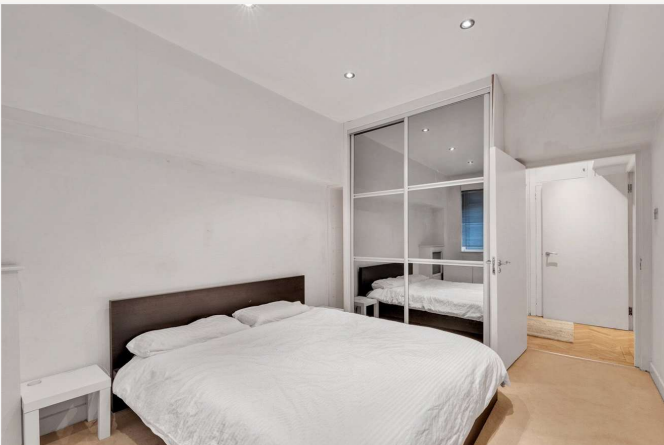
Service Charge Note: Includes heating, hot water and reserve fund contributions.

Ground Rent: £0 Annually (subject to increase)

Council Tax Band: E

EPC rating: C





Score	Energy rating	Current	Potential
92+	A		
81-91	B		
69-80	C		79 C
55-68	D	69 C	
39-54	E		
21-38	F		
1-20	G		

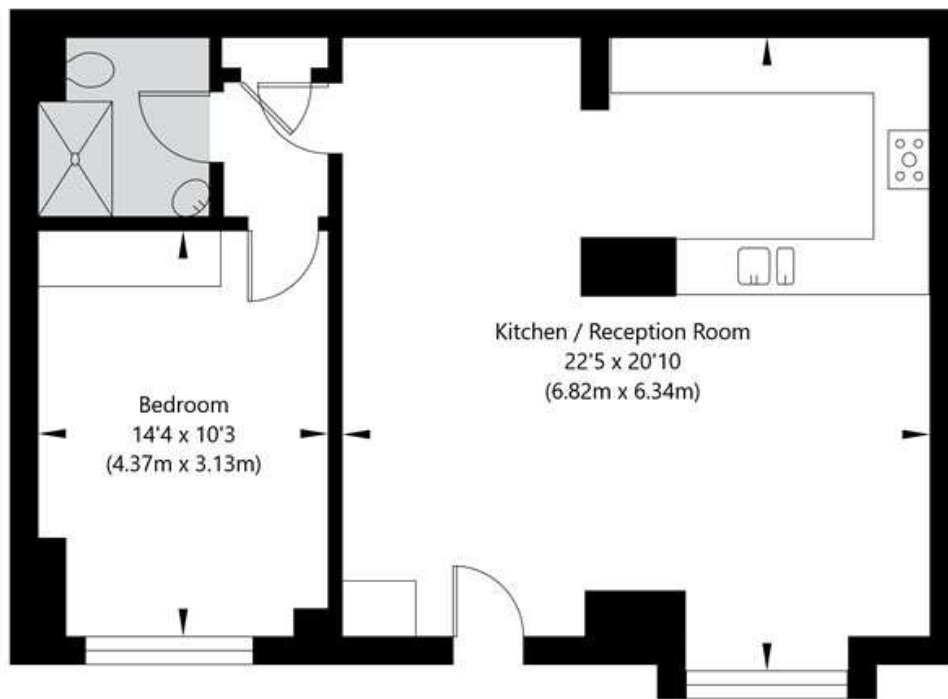
For more information, scan the QR code or visit the link below



<https://www.winkworth.co.uk/sale/property/SJD250307>

Grove End Gardens, London NW8 9LL

Ground Floor
GROSS INTERNAL FLOOR AREA
APPROX. 62.7 SQ M / 675 SQ FT



APPROXIMATE GROSS INTERNAL FLOOR AREA 62.7 SQ M / 675 SQ FT
THIS FLOOR PLAN IS FOR ILLUSTRATIVE PURPOSES ONLY AND
SHOULD BE USED FOR THIS PURPOSE BY PROSPECTIVE APPLICANTS AS ITS NOT TO SCALE.

(c) AMBERSHORE PIX LIMITED / PHOTO - VIDEO - FLOOR PLANS / 0800 999 1577 / WWW.AMBERSHOREPIX.CO.UK

Where no figures are shown, we have been unable to ascertain the information. All figures that are shown were correct at the time of printing.

St John's Wood

020 7586 7001 | stjohnswood@winkworth.co.uk

Winkworth wishes to inform prospective buyers and tenants that these particulars are a guide and act as information only. All our details are given in good faith and believed to be correct at the time of printing but they don't form part of an offer or contract. No Winkworth employee has authority to make or give any representation or warranty in relation to this property. All fixtures and fittings, whether fitted or not are deemed removable by the vendor unless stated otherwise and room sizes are measured between internal wall surfaces, including furnishings.