

Sloane Square House, London, SW1W
£900 per week

2  1  1 



Winkworth Knightsbridge
020 7589 6616 | knightsbridge@winkworth.co.uk

Winkworth

for every step...

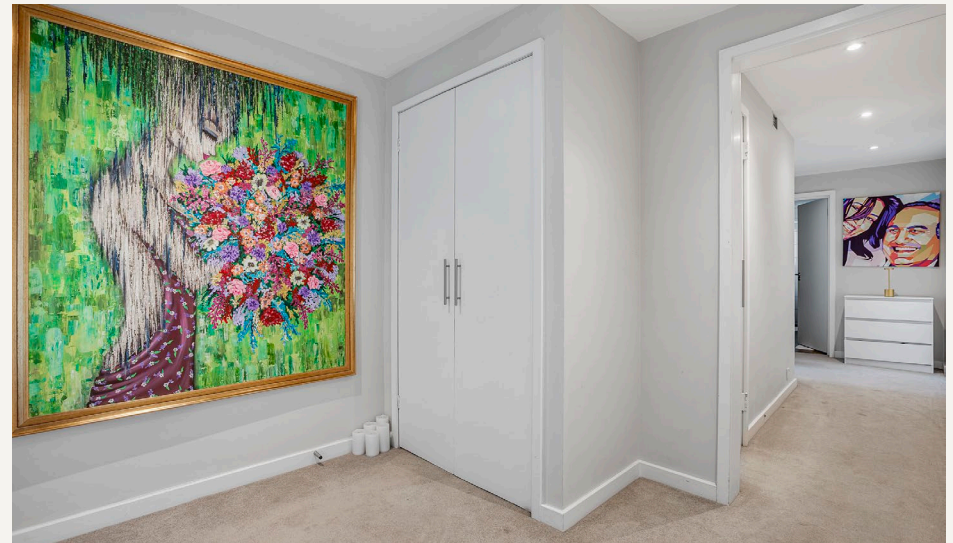
Contemporary Living with Comfort and Convenience in a Prime Location

ABOUT THE PROPERTY

Presenting this stylish and contemporary two-bedroom apartment located on an upper floor with lift access in a sought-after area. This property comes fully furnished, offering a comfortable and convenient living space for professionals or a small family. The apartment boasts a sleek and modern design with high-quality finishes throughout. The open-plan kitchen and living area provide a spacious and bright atmosphere, perfect for relaxing after a long day. Situated in a prime location, this property benefits from easy access to local amenities, restaurants, and transport links, making it an ideal choice for those seeking a convenient urban lifestyle. Don't miss the opportunity to make this stylish apartment your new home. Contact us today to arrange a viewing.

KEY FEATURES

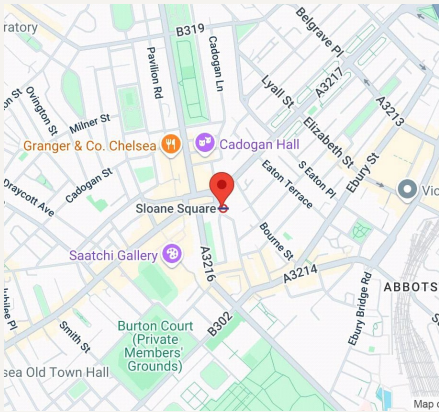
- 2 bedrooms
- 1 reception room
- 1 bathrooms
- 923 Square Feet
- Prime Location
- Modern







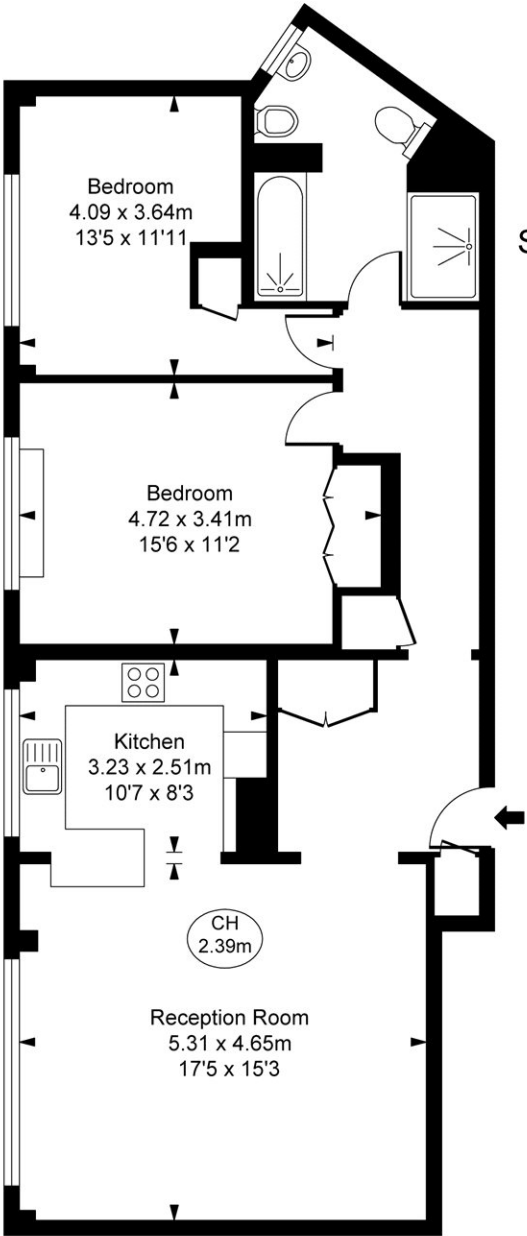




FINER DETAILS

- 2 bedrooms
- 1 reception room
- 1 bathrooms
- 923 Square Feet
- Prime Location
- Modern

Score	Energy rating	Current	Potential
92+	A		
81-91	B		
69-80	C	72 C	77 C
55-68	D		
39-54	E		
21-38	F		
1-20	G		



Sloane Square House, SW1W
 Approximate Gross Internal Area
85.74 sq m / 923 sq ft

(CH = Ceiling Heights)



Fifth Floor

This plan is not to scale. It is for guidance and not for valuation purposes.
 All measurements and areas are approximate only, and have been prepared in accordance with the current edition of the RICS Code of Measuring Practice.
 © Fulham Performance



Winkworth Knightsbridge
020 7589 6616 | knightsbridge@winkworth.co.uk

Winkworth

for every step...