



BRITTEN CLOSE, NW11
£535,000 LEASEHOLD

A FABULOUS 2 BEDROOM, 2 BATHROOM APARTMENT AJOINING THE HAMPSTEAD HEATH EXTENSION

Golders Green | 020 8458 8313 | goldersgreen@winkworth.co.uk

2 BEDROOMS/ 2 BATHROOMS/ BALCONY/PRIVATE PARKING
ADJACENT TO THE HEATH EXTENSION/HIGHLY DESIRABLE BLOCK
LONG LEASE/ EPC: C /COUNCIL TAX BAND: E



DESCRIPTION:

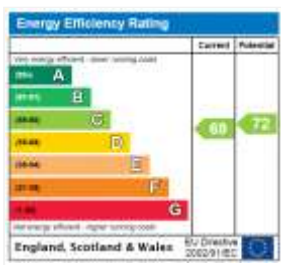
We are delighted to offer this spacious 2 bedroom 2 bathroom raised ground floor apartment, located in Central Golders Green but only moments from the Hampstead Heath Extension and Golders Hill Park.

Britten Close is located in a quiet no through road off Wellgarth Road. It is a residential area for flats and houses, part of which is now a new development that was built on the old Chandos Tennis Club. Golders Green tube is approximately ¼ mile away.

The apartment is extremely well maintained and has a south facing balcony off the living room. There is a separate kitchen and 2 modern bathrooms, one of which is ensuite to the master bedroom. The flat has its own reserved underground parking space.

Rarely do flats in this development become available, particularly ones on the raised ground floor, all on one level.

Viewing is highly recommended.



Leasehold 171 years from 8th October 2010

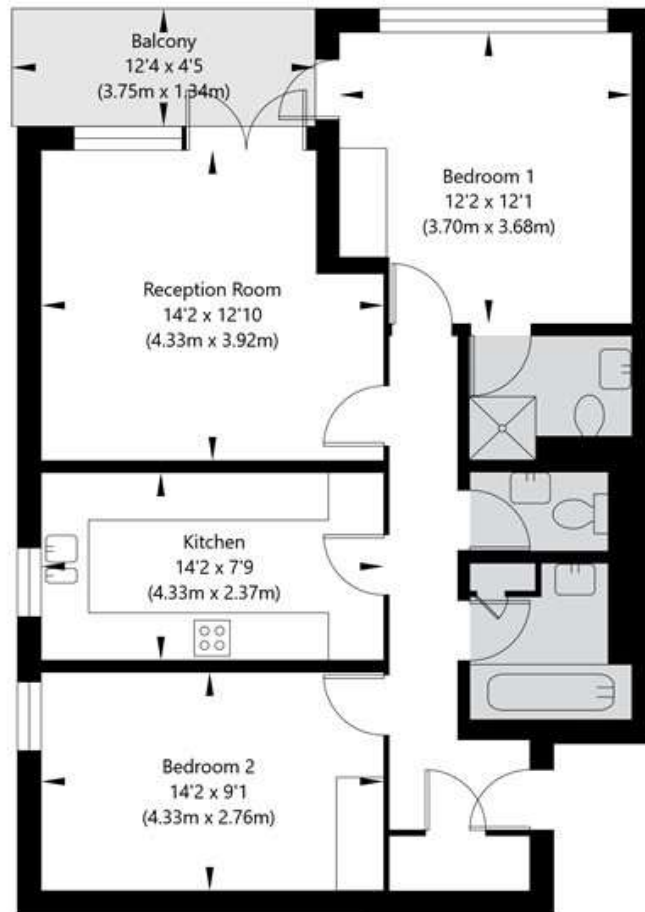
Ground Rent: £140.40 per year

Service Charge: £2622.88 per year



Britten Close, London, NW11 7HQ

Raised Ground Floor
GROSS INTERNAL FLOOR AREA
APPROX. 72.52 SQ M / 781 SQ FT



APPROXIMATE GROSS INTERNAL FLOOR AREA 72.52 SQ M / 781 SQ FT
THIS FLOOR PLAN IS FOR ILLUSTRATIVE PURPOSES ONLY AND
SHOULD BE USED FOR THIS PURPOSE BY PROSPECTIVE APPLICANTS AS ITS NOT TO SCALE.

(c) AMBERSHORE PIX LIMITED / PHOTO - VIDEO - FLOOR PLANS / 0800 999 1577 / WWW.AMBERSHOREPIX.CO.UK