



Hewer Street, W10

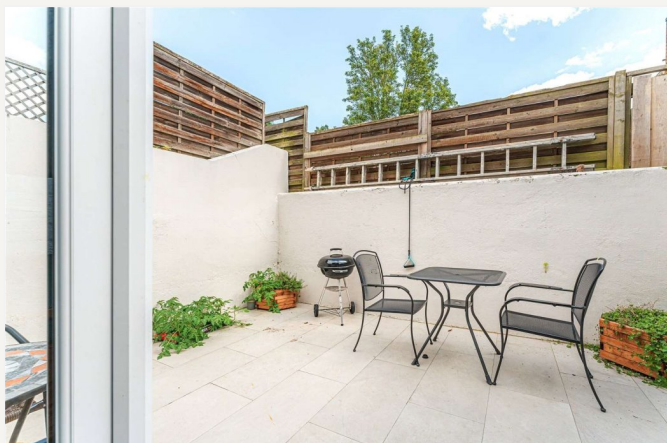
Offers Over £1,000,000 *Freehold*

3  1  1 

Presenting this lovely three-bedroom period home, quietly positioned on a residential street in the heart of North Kensington. The property features a spacious double-aspect reception room with engineered wooden flooring throughout, beautifully decorated and filled with natural light. To the rear, a fully fitted kitchen/diner offers solid wood worktops and the added comfort of underfloor heating, creating a practical yet welcoming space for everyday living and entertaining leading to a lovely private garden.

KEY FEATURES

- Three bedroom period home
- Quiet residential road
- Double aspect reception
- Eat-in kitchen/diner
- Engineered wooden flooring
- Close to Ladbroke Grove



North Kensington

020 7792 5000 | northkensington@winkworth.co.uk

Winkworth

for every step...



The first floor comprises three well-proportioned bedrooms alongside a contemporary family bathroom.

Ladbroke Grove, one of North Kensington's most vibrant and multicultural neighbourhoods, offers an excellent selection of independent restaurants, cafés, and antique furniture shops. The world-famous Portobello Road Market and superb transport links at Ladbroke Grove station are just a short walk away, making this an ideal home for modern urban living.





MATERIAL INFO

Tenure: Freehold
Council Tax Band: RBKC Band E
EPC rating: D

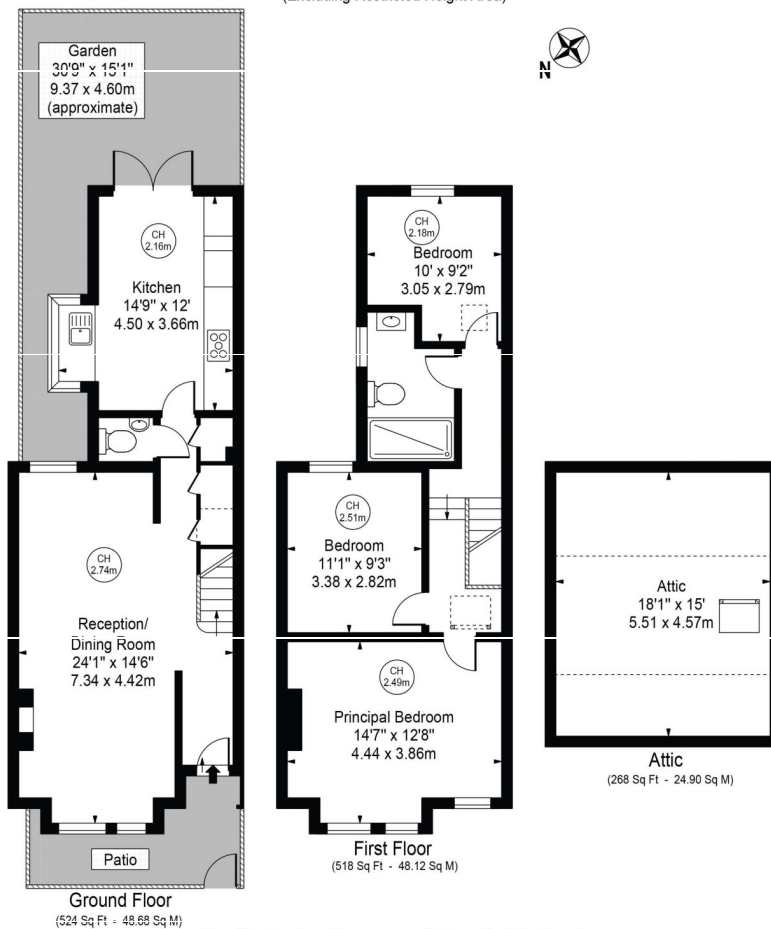
Hewer Street, North Kensington

Approx. Total Internal Area 1310 Sq Ft - 121.70 Sq M

(Including Restricted Height Area)

Approx. Gross Internal Area 1162 Sq Ft - 107.95 Sq M

(Excluding Restricted Height Area)



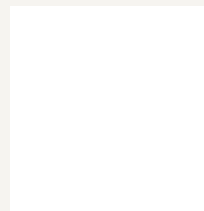
For Illustration Purposes Only - Not To Scale

This floor plan should be used as a general outline for guidance only and does not constitute in whole or in part an offer or contract. Any intending purchaser or lessee should satisfy themselves by inspection, searches, enquiries and full survey as to the correctness of each statement. Any areas, measurements or distances quoted are approximate and should not be used to value a property or be the basis of any sale or let.

Copyright Morriarti Photography & Design LTD

Score	Energy rating	Current	Potential
92+	A		
81-91	B		
69-80	C		80 C
55-68	D	69 D	
39-54	E		
21-38	F		
1-20	G		

For more information, scan the QR code or visit the link below



<https://www.winkworth.co.uk/sale/property/LAD260016>

Where no figures are shown, we have been unable to ascertain the information. All figures that are shown were correct at the time of printing.

North Kensington

020 7792 5000 | northkensington@winkworth.co.uk

Winkworth

for every step...

Winkworth wishes to inform prospective buyers and tenants that these particulars are a guide and act as information only. All our details are given in good faith and believed to be correct at the time of printing but they don't form part of an offer or contract. No Winkworth employee has authority to make or give any representation or warranty in relation to this property. All fixtures and fittings, whether fitted or not are deemed removable by the vendor unless stated otherwise and room sizes are measured between internal wall surfaces, including furnishings.