



FARRER ROAD, HARROW, MIDDLESEX, HA3
£610,000 FREEHOLD

THREE BEDROOM SEMI DETACHED HOUSE NEAR KENTON STATION

Kingsbury | 020 8204 0000 | kingsbury@winkworth.co.uk

Winkworth

for every step...

winkworth.co.uk



Situated moments from the vibrant heart of Kenton Road, this well-presented semi-detached home offers both convenience and potential. The property boasts a cosy living room, a separate dining room perfect for entertaining, and a neutral, functional kitchen. Upstairs, there are three generously sized bedrooms and a well-appointed bathroom. External benefits include off-street parking for two cars and a large, private garden. With promising scope for extension and redevelopment (STPP), this property presents an exciting opportunity for buyers. Ideally located, the home is within close proximity to excellent educational facilities for all ages, making it a great choice for families. Additionally, Kenton Station (Bakerloo Line) is nearby, offering easy access to the city. This property is perfect for those seeking a comfortable family home with room to grow.

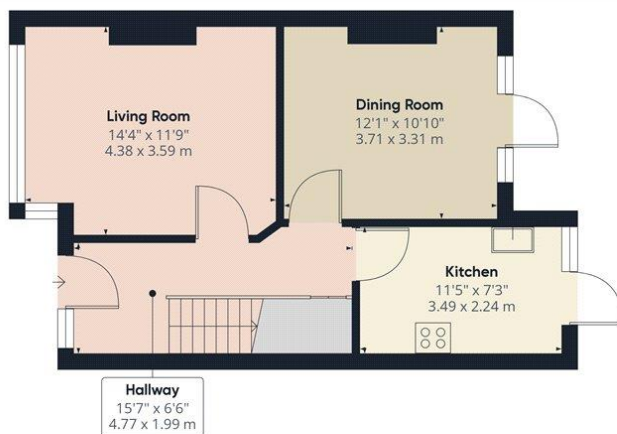


Winkworth

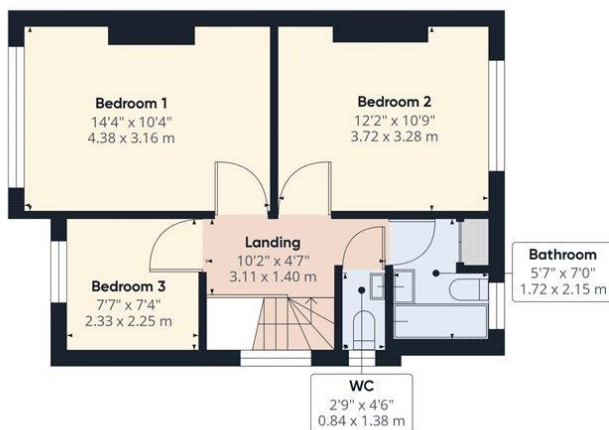
for every step...



Winkworth



Ground Floor



Floor 1

Approximate total area⁽¹⁾
919.78 ft²
85.45 m²

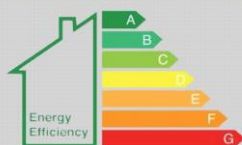
(1) Excluding balconies and terraces

While every attempt has been made to ensure accuracy, all measurements are approximate, not to scale. This floor plan is for illustrative purposes only.
Calculations are based on RICS IPMS 3C standard.

GIRAFFE 360

This floorplan is for illustration purposes only and is not to scale. The position and size of doors, windows, appliances and other features are approximate.

EPC rating coming soon



Tenure: Freehold

Council Tax Band: D - Harrow

Where no figures are shown, we have been unable to ascertain the information. All figures that are shown were correct at the time of printing.

Kingsbury | 020 8204 0000 | kingsbury@winkworth.co.uk

Winkworth

for every step...

winkworth.co.uk

Winkworth wishes to inform prospective buyers and tenants that these particulars are a guide and act as information only. All our details are given in good faith and believed to be correct at the time of printing but they don't form part of an offer or contract. No Winkworth employee has authority to make or give any representation or warranty in relation to this property. All fixtures and fittings, whether fitted or not are deemed removable by the vendor unless stated otherwise and room sizes are measured between internal wall surfaces, including furnishings.