



BOWMANS MEWS, LONDON, E1
£725,000 LEASEHOLD

LARGE TWO DOUBLE BEDROOM TWO BATHROOM APARTMENT WITH PRIVATE GARDEN AND GARAGE

Shoreditch | 020 7749 7650 | shoreditch@winkworth.co.uk

Winkworth



DESCRIPTION:

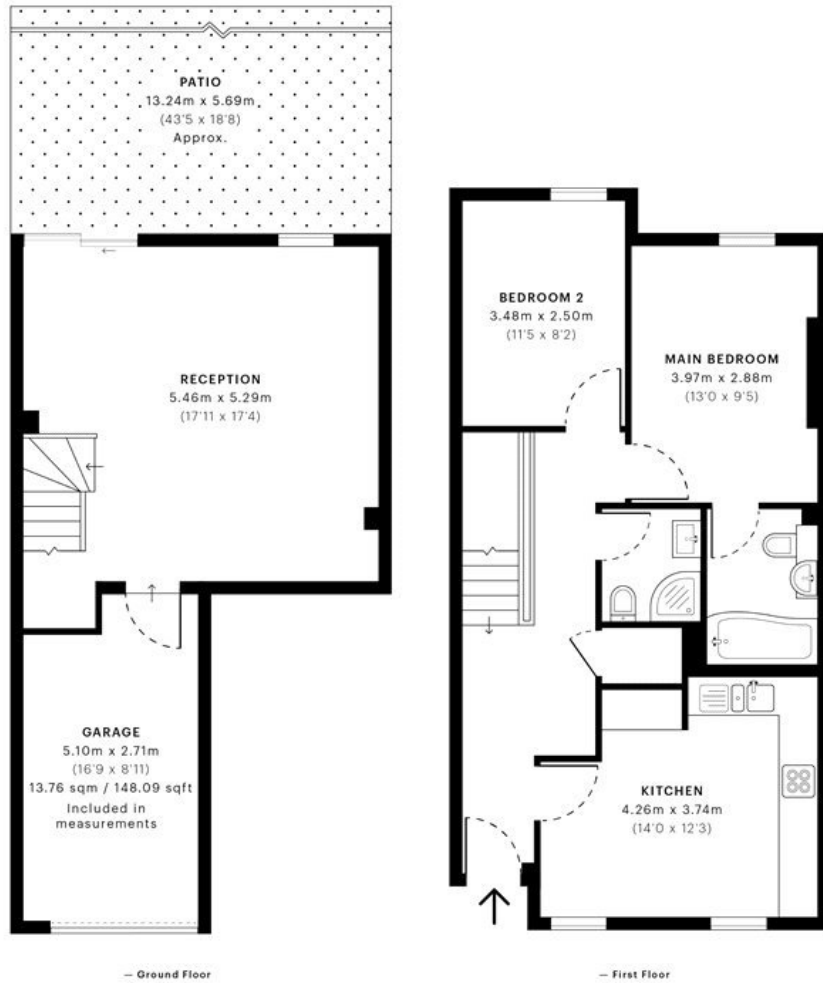
A beautifully presented two double bedrooms, two-bathroom split level maisonette in an exclusive gated development with wonderful communal gardens, large private garden and garage. The property is accessed via the first floor which leads to a spacious entrance hallway with storage cupboard, fully fitted kitchen/dining area, bathroom, main double bedroom with en-suite family bathroom and second double bedroom. Downstairs leads to large living room with sliding door leading the large garden and an access door to the private garage. The development also provides on-site concierge and guest parking.

Bowman Mews is a modern development which is easy walking distance of St Katherine's Dock, the City and the Thames path. The flat is a property is a short distance to Tower Hill DLR station offering fantastic access to Canary Wharf and the City. The property is also close to both the local bars and restaurants including Tobacco Dock as well as Waitrose.

Winkworth



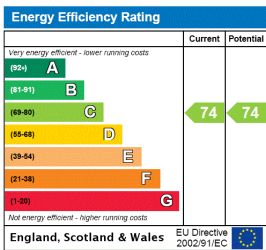
Winkworth



Spec Verified floor plans are produced in accordance with Royal Institution of Chartered Surveyors' Property Measurement Standards. Plots and gardens are illustrative only and excluded from all area calculations. Due to rounding, numbers may not add up precisely. All measurements shown for the individual room lengths and widths are the maximum points of measurements captured in the scan.

IPMS 3B RESIDENTIAL 97.44 sqm / 1048.84 sqft
 IPMS 3C RESIDENTIAL 93.99 sqm / 1011.70 sqft
 SPEC ID: 60055c85326c090dce48a4e9

This floorplan is for illustration purposes only and is not to scale. The position and size of doors, windows, appliances and other features are approximate.



Shoreditch | 020 7749 7650 | shoreditch@winkworth.co.uk

