



BURLINGTON ROAD, CR7

£530,000 FREEHOLD

A FANTASTIC END-OF-TERRACE THREE BEDROOM FAMILY HOME WITH LARGE GARDEN, A SHORT DISTANCE FROM CRYSTAL PALACE.

Crystal Palace | 02038693222 | crystalpalace@winkworth.co.uk

Winkworth

for every step...

winkworth.co.uk



DESCRIPTION:

A fantastic three-bedroom, end of terrace family home for sale, situated on Burlington Road, which is conveniently located between Crystal Palace and Thornton Heath.

This 852 Sq Ft property comprises; entrance hallway, double reception & dining room, separate fitted kitchen, a generous, well maintained garden, modern family bathroom and three double bedrooms.

The transport links of Thornton Heath which offer links into London Victoria in 26 minutes & London Bridge in 36 minutes as well as access to Clapham Junction & Balham station for the Northern line tube is a 20-minute walk away. Norwood Junction station can be reached by a short bus journey and offers links into London Bridge in 13 minutes and the Overground network serving East London. The superb local amenities on and around the Crystal Palace "Triangle" which offers an abundance of independent shops, cafes, bars & restaurants is within easy reach.

Council Tax band D





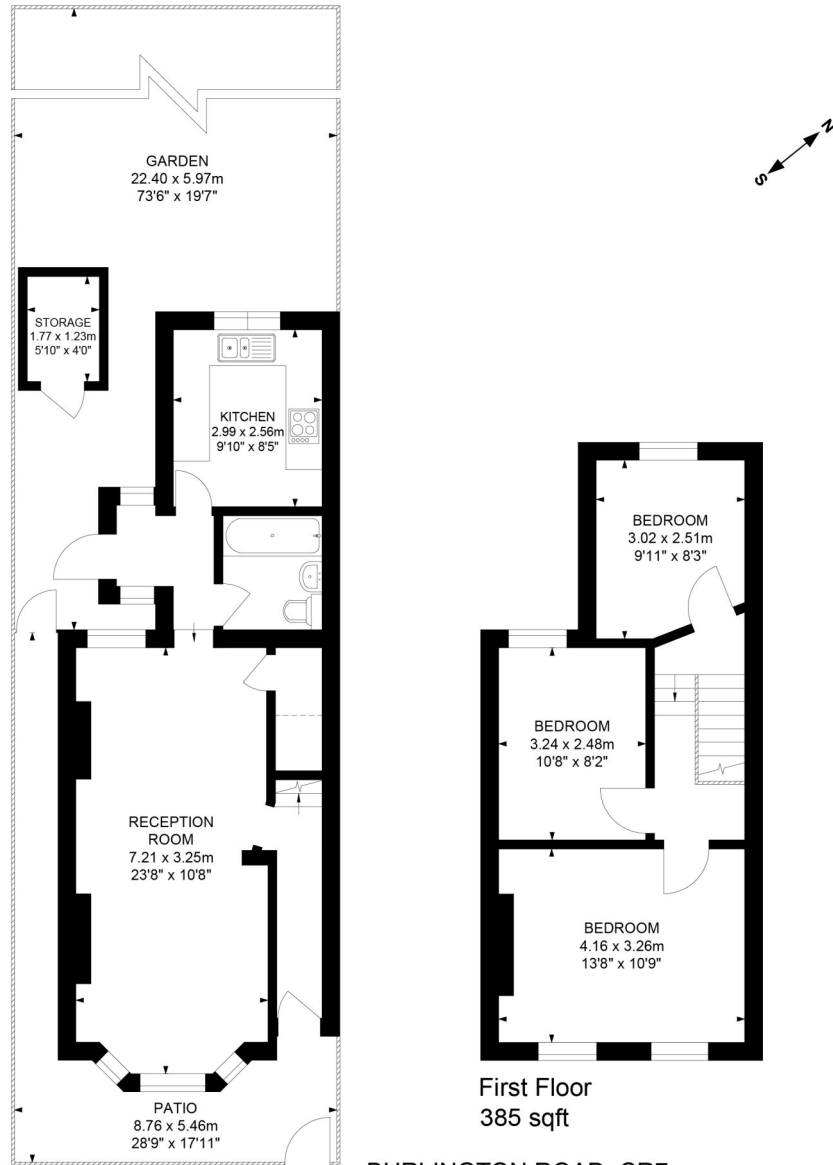


Illustration for Identification Purposes Only. Not To Scale.
Floor Plan Drawing Accoring To RICS Guidelines.

This floorplan is for illustration purposes only and is not to scale. The position and size of doors, windows, appliances and other features are approximate.

Score	Energy rating	Current	Potential
92+	A		
81-91	B		85 B
69-80	C		
55-68	D	57 D	
39-54	E		
21-38	F		
1-20	G		

Tenure: Freehold

Term: 0 year and 0 months

Service Charge: £0 per annum

Ground Rent: £ 0 Annually (subject to increase)

Council Tax Band: D

Where no figures are shown, we have been unable to ascertain the information. All figures that are shown were correct at the time of printing.

Winkworth

for every step...

Crystal Palace | 02038693222 | crystalpalace@winkworth.co.uk

winkworth.co.uk

Winkworth wishes to inform prospective buyers and tenants that these particulars are a guide and act as information only. All our details are given in good faith and believed to be correct at the time of printing but they don't form part of an offer or contract. No Winkworth employee has authority to make or give any representation or warranty in relation to this property. All fixtures and fittings, whether fitted or not are deemed removable by the vendor unless stated otherwise and room sizes are measured between internal wall surfaces, including furnishings.